

PPAC's Snapshot of India's Oil & Gas data

Abridged Ready Reckoner
October, 2020

Petroleum Planning & Analysis Cell
(Ministry of Petroleum & Natural Gas)



Petroleum Planning & Analysis Cell (PPAC), an attached office of the Ministry of Petroleum & Natural Gas (MoPNG), Government of India, collects and analyses data on the Oil and Gas sector. It disseminates many reports on the Oil & Gas sector to the various stakeholders. The data is obtained from the Public Sector companies, Government agencies as well as the Private companies. The number of CNG vehicles is being reconciled & has not been included in this ARR. Given the ever-increasing demand for energy and transition of energy demand to renewables and Biofuels, Policy makers and Analysts need to be well informed about the updated trends in the Oil & Gas industry.

The PPAC's Snapshot of India's Oil & Gas data (Abridged Ready Reckoner) provides a comprehensive compilation of the latest data/information in a single volume for the latest month and historical time series. The Snapshot of India's Oil & Gas data is also published on PPAC's website (www.ppac.gov.in) and is accessible on mobile app-PPACE.

This publication is a concerted effort by all divisions of PPAC. The cooperation of the oil and gas industry is acknowledged for their timely inputs.

PPAC's Snapshot of India's Oil & Gas data

Abridged Ready Reckoner October, 2020

Petroleum Planning & Analysis Cell

(Ministry of Petroleum & Natural Gas)



As on 19.11.2020

Table of contents

Table	Description	Page No.
	Highlights for the month	2-3
	ECONOMIC INDICATORS	
1	Selected indicators of the Indian economy	5
2	Crude oil, LNG and petroleum products at a glance; Graph	6-7
	CRUDE OIL, REFINING & PRODUCTION	
3	Indigenous crude oil production	9
4	Domestic oil & gas production vis-à-vis overseas production	9
5	High Sulphur (HS) & Low Sulphur (LS) Crude Oil processing	9
6	Quantity and value of crude oil imports	10
7	Self-sufficiency in petroleum products	10
8	Refineries: Installed capacity and crude oil processing	11-12
9	Crude oil and product pipeline network	12
	Map of crude oil and product pipeline network	13
10	Gross Refining Margins (GRM) of refineries; Graph	14-15
11	GRM of North-East refineries excluding excise duty benefit; Graph	16
	CONSUMPTION	
12	Production and consumption of petroleum products; Graph	18-19
13	Kerosene allocation vs upliftment	20
14	Ethanol blending programme	20
15	Industry marketing infrastructure	20
	LIQUEFIED PETROLEUM GAS (LPG)	
16	LPG consumption	22
17	LPG marketing at a glance; Graph	22-23
18	Region-wise data on LPG marketing; Graph	24
	NATURAL GAS	
19	Natural gas at a glance; Graph	26
20	Coal Bed Methane (CBM) gas development in India	27
21	Major natural gas pipeline network	27
22	Existing LNG terminals	27
23	Status of PNG connections & CNG stations across India	28-32
24	Domestic natural gas price and gas price ceiling	33
	TAXES & DUTIES ON PETROLEUM PRODUCTS	
25	Information on prices, taxes and under-recoveries/subsidies	35-36
	MISCELLANEOUS	
26	Capital expenditure of PSU oil companies	38
27	Conversion factors and volume conversion	39

Highlights for the month

- The total consumption of petroleum products in October 2020 registered a growth of 2.5% as compared to October 2019 thus reaching in positive territory for the first time in FY 2020-21. As compared to September 2020, the consumption during October 2020 grew by 14.8% indicating boosting of economic activity. On cumulative basis for duration April-October 2020 the consumption recovered 84.1% of its historical volume in the same period of the previous year.
- The products, LPG 3.2%, Naphtha 15.2%, MS 4.5%, HSD 7.4%, LDO 42.1%, FO/LSHS 12.3% & bitumen 48.7% registered a growth during October 2020 as compared to the same period of the previous year.
- Ethanol blending with Petrol was 4.2% during October 2020 and 5% during December 2019 to October 2020.
- Total consumption of natural gas (including internal consumption) for the month of October, 2020 was 5628 MMSCM which was 4.2% higher than the corresponding month of the previous year. The cumulative consumption of 34918 MMSCM for the current year till October, 2020 was lower by 6.5% compared with the corresponding period of the previous year.
- Indigenous crude oil and condensate production during October 2020 was lower by 6.2% than that of October 2019 as compared to a de-growth of 6% during September 2020. OIL and ONGC registered a de-growth of 5.8% and 0.3% respectively during October 2020 as compared to October 2019. PSC registered de-growth of 19.8% during October 2020 as compared to October 2019. De-growth of 6.1% was registered in the total crude oil and condensate production during April-October 2020 over the corresponding period of the previous year.
- Crude oil processed during October 2020 was 18.4 MMT, which was 16.1% lower than October 2019 as compared to a de-growth of 8.8% during September 2020. De-growth of 19.7% was registered in the total crude oil processing during April-October 2020 over the corresponding period of the previous year.
- Production of petroleum products saw a de-growth of 17.0% during October 2020 over October 2019 as compared to a de-growth of 9.5% during September 2020. Degrowth of 16.4% was registered in the total POL production during April- October 2020 over the corresponding period of the previous year.

<ul style="list-style-type: none"> Gross production of natural gas for the month of October, 2020 was 2419 MMSCM which was lower by 8.4% compared with the corresponding month of the previous year. The cumulative gross production of natural gas of 16373 MMSCM for the current financial year till October, 2020 was lower by 12.2% compared with the corresponding period of the previous year.
<ul style="list-style-type: none"> Crude oil imports decreased by 21.6% and 20.2% during October 2020 and April - October 2020 respectively as compared to the corresponding period of the previous year.
<ul style="list-style-type: none"> POL products imports decreased 53.1% during October 2020 and 6.4% during April - October 2020 respectively as compared to the corresponding period of the previous year. Decrease in POL products imports during April - October 2020 was due to decrease in imports of motor spirit (MS), naphtha, high speed diesel (HSD), lube oil and pet coke.
<ul style="list-style-type: none"> LNG import for the month of October, 2020 was 3280 MMSCM which was 16.1% higher than the corresponding month of the previous year. The cumulative import of 19078 MMSCM for the current year till October, 2020 was lower by 0.9% compared with the corresponding period of the previous year.
<ul style="list-style-type: none"> Exports of POL products decreased by 35.7% and 11% during October 2020 and April - October 2020 respectively as compared to the corresponding period of the previous year. Decrease in POL products exports during April - October 2020 was due to decrease in exports of motor spirit (MS), naphtha, aviation turbine fuel (ATF), fuel oil (FO), superior kerosene oil (SKO) and bitumen.
<ul style="list-style-type: none"> The price of Brent Crude averaged \$40.15/bbl during October, 2020 as against \$40.81/bbl during September 2020 and \$59.72/bbl during October 2019. The Indian basket crude price averaged \$40.66/bbl during October 2020 as against \$41.35/bbl during September 2020 and \$59.70 /bbl during October 2019.



PART-A

Economic Indicators

GROSS DOMESTIC PRODUCT

GDP

1. Selected indicators of the Indian economy

Economic indicators		Unit/ Base	2015-16	2016-17	2017-18	2018-19	2019-20	2020-21
1	Population (as on 1 st May, 2011)	Billion	1.2	-	-	-	-	-
2	GDP at constant (2011-12 Prices)	Growth %	8.0 3rd RE	8.2 2nd RE	7.1 2nd RE	6.1 1st RE	4.2 PE	-23.9 Q1 (E)
3	Agricultural Production (Food grains)	MMT	251.5	275.1	285.0	285.2	296.7 4th AE	144.5 1st AE (Kharif)
		Growth %	-0.2	9.4	3.6	0.1	4.0	2.8 [§]
4	Gross Fiscal Deficit (as percent of GDP)	%	3.9	3.5	3.5	3.4	3.8 RE	3.5 BE

Economic indicators		Unit/ Base	2018-19	2019-20	October		April-October	
					2019-20	2020-21 (P)	2019-20	2020-21 (P)
5	Index of Industrial Production (Base: 2011-12)	Growth %	3.8	-0.8	-4.6*	0.2* QE	1.3 [#]	-21.1 [#]
6	Imports	\$ Billion	514.1	474.7	38.0	33.6	286.1	182.3
7	Exports	\$ Billion	330.1	313.4	26.2	24.9	185.4	150.1
8	Trade Balance	\$ Billion	-184.0	-161.3	-11.8	-8.7	-100.7	-32.2
9	Foreign Exchange Reserves [@]	\$ Billion	411.9	475.6	442.6	560.7	-	-

[§] 2019-20 1st AE (Kharif) 140.57 MMT; IIP is for the month of *September & #April-September; [@] 2018-19-as on March 29, 2019, 2019-20-as on March 27, 2019, October 2019- as on October 25, 2019 and October 2020-as on October 30, 2020; AE-Advanced Estimates; RE-Revised Estimates; QE-Quick Estimates; PE: Provisional Estimates.

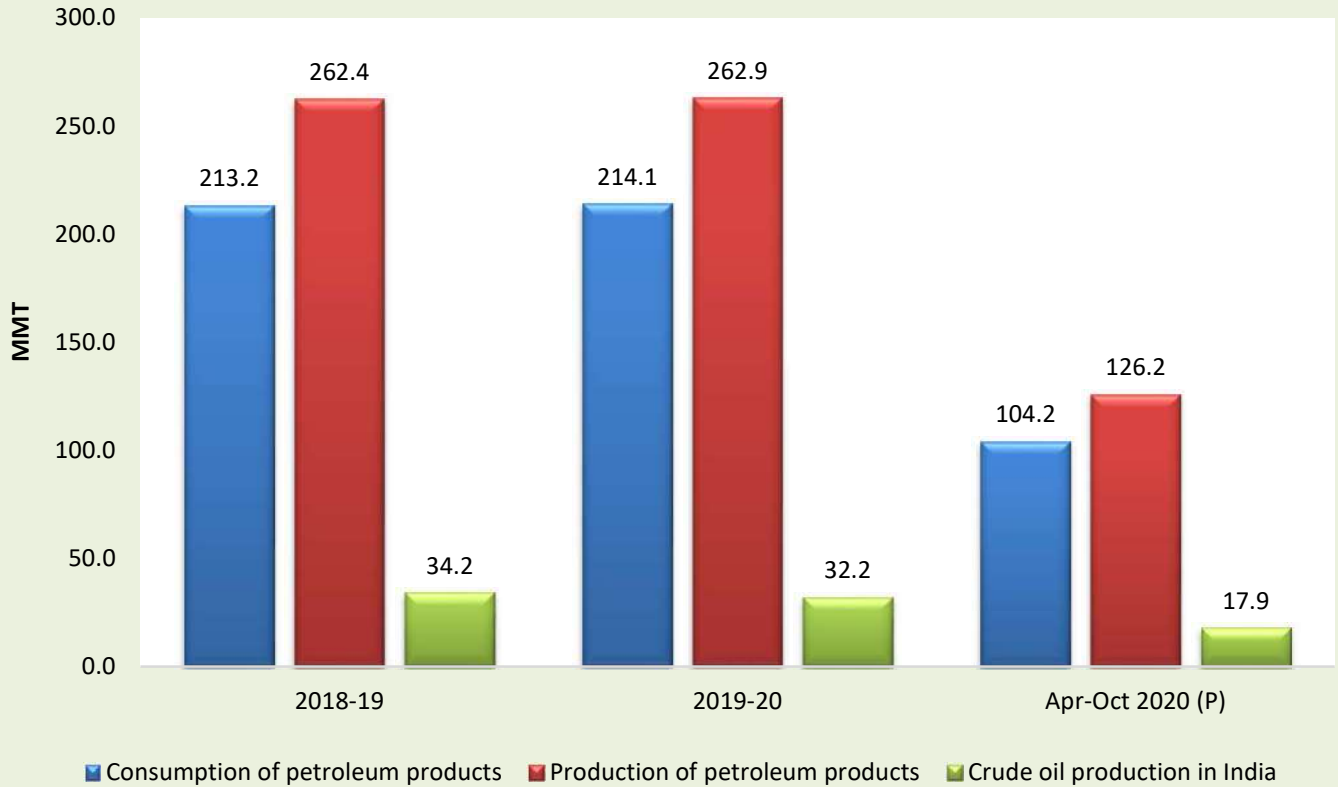
Source: Ministry of Commerce & Industry, Ministry of Statistics and Programme Implementation, Ministry of Agriculture & Farmer's Welfare, Ministry of Finance, Reserve Bank of India

2. Crude oil, LNG and petroleum products at a glance

Details		Unit/ Base	2018-19	2019-20	October		April-October	
					2019-20	2020-21 (P)	2019-20	2020-21 (P)
1	Crude oil production in India	MMT	34.2	32.2	2.7	2.6	19.1	17.9
2	Consumption of petroleum products*	MMT	213.2	214.1	17.3	17.8	123.9	104.2
3	Production of petroleum products	MMT	262.4	262.9	22.7	18.9	150.9	126.2
4	Gross natural gas production	MMSCM	32,875	31,184	2,641	2,419	18,646	16,373
5	Natural gas consumption	MMSCM	60,798	64,143	5,396	5,628	37,351	34,918
6	Imports & exports:							
	Crude oil imports	MMT	226.5	227.0	19.3	15.1	130.8	104.3
		\$ Billion	111.9	101.4	8.4	4.4	61.0	26.9
	Petroleum products (POL) imports*	MMT	33.3	43.8	3.5	1.7	24.5	22.9
		\$ Billion	16.3	17.7	1.4	0.6	9.9	6.4
	Gross petroleum imports (Crude + POL)	MMT	259.8	270.7	22.8	16.8	155.3	127.3
		\$ Billion	128.3	119.1	9.8	5.1	70.8	33.3
	Petroleum products (POL) export	MMT	61.1	65.7	6.0	3.8	37.5	33.4
		\$ Billion	38.2	35.8	3.3	1.3	21.4	10.3
	LNG imports*	MMSCM	28,740	33,887	2,826	3,280	19,243	19,078
		\$ Billion	10.3	9.5	0.8	0.7	5.5	3.8
7	Petroleum imports as percentage of India's gross imports (in value terms)	%	24.9	25.1	25.9	15.0	24.8	18.3
8	Petroleum exports as percentage of India's gross exports (in value terms)	%	11.6	11.4	12.7	5.4	11.5	6.8
9	Import dependency of crude (on consumption basis)	%	83.8	85.0	84.0	86.1	84.6	83.1

*Jul - Oct 2020 DGCIS data prorated

Crude Oil & Petroleum Products (MMT)





PART-B

Crude Oil, Refining & Production

3. Indigenous crude oil production (Million Metric Tonnes)

Details	2018-19	2019-20	October			April-October		
			2019-20	2020-21 Target*	2020-21 (P)	2019-20	2020-21 Target*	2020-21 (P)
ONGC	19.6	19.2	1.6	1.8	1.6	11.1	12.3	11.2
Oil India Limited (OIL)	3.3	3.1	0.3	0.3	0.3	1.9	1.8	1.7
Private / Joint Ventures (JVs)	9.6	8.2	0.7	0.7	0.6	5.1	4.8	4.2
Total Crude Oil	32.5	30.5	2.6	2.8	2.4	18.1	18.9	17.1
ONGC condensate	1.5	1.4	0.1		0.1	0.8		0.7
PSC condensate	0.2	0.3	0.02		0.02	0.1		0.1
Total condensate	1.7	1.6	0.1		0.1	1.0		0.8
Total (Crude + Condensate) (MMT)	34.2	32.2	2.7	2.8	2.6	19.1	18.9	17.9
Total (Crude + Condensate) (Million Bbl/Day)	0.69	0.64	0.65		0.61	0.65		0.61

*Provisional targets inclusive of condensate.

4. Domestic oil & gas production vis-à-vis overseas production

Details	2018-19	2019-20	October		April-October	
			2019-20	2020-21 (P)	2019-20	2020-21 (P)
Total domestic production (MMTOE)	67.1	63.4	5.4	5.0	37.8	34.3
Overseas production (MMTOE)	24.7	24.5	2.1	1.8	14.4	12.8
Overseas production as percentage of domestic production	36.8%	38.7%	38.2%	37.1%	38.3%	37.4%

Source: ONGC Videsh, GAIL, OIL, IOCL, HPCL & BPRL

5. High Sulphur (HS) & Low Sulphur (LS) crude oil processing (MMT)

Details		2018-19	2019-20	October		April-October	
				2019-20	2020-21 (P)	2019-20	2020-21 (P)
1	High Sulphur crude	194.2	192.4	16.7	13.5	109.8	86.5
2	Low Sulphur crude	63.0	62.0	5.2	4.8	37.8	32.0
Total crude processed (MMT)		257.2	254.4	21.9	18.4	147.7	118.6
Total crude processed (Million Bbl/Day)		5.17	5.09	5.18	4.35	5.06	4.06
Percentage share of HS crude in total crude oil processing		75.5%	75.6%	76.4%	73.6%	74.4%	73.0%

6. Quantity and value of crude oil imports

Year	Quantity (MMT)	\$ Million	Rs. Crore
2018-19	226.5	1,11,915	7,83,183
2019-20	227.0	1,01,376	7,17,001

7. Self-sufficiency in petroleum products (Million Metric Tonnes)

Particulars		2018-19	2019-20	October		April-October	
				2019-20	2020-21 (P)	2019-20	2020-21 (P)
1	Indigenous crude oil processing	31.7	29.3	2.5	2.3	17.5	16.2
2	Products from indigenous crude (93.3% of crude oil processed)	29.6	27.3	2.4	2.1	16.3	15.1
3	Products from fractionators (Including LPG and Gas)	4.9	4.8	0.4	0.4	2.8	2.5
4	Total production from indigenous crude & condensate (2 + 3)	34.5	32.1	2.8	2.5	19.1	17.6
5	Total domestic consumption	213.2	214.1	17.3	17.8	123.9	104.2
% Self-sufficiency (4 / 5)		16.2%	15.0%	16.0%	13.9%	15.4%	16.9%

8. Refineries: Installed capacity and crude oil processing (MMTPA / MMT)

Company	Refinery	Installed capacity (1.11.2020) MMTPA	Crude oil processing (MMT)							
			2018-19	2019-20	October			April-October		
					2019-20	2020-21 (Target)	2020-21 (P)	2019-20	2020-21 (Target)	2020-21 (P)
IOCL	Barauni (1964)	6.0	6.7	6.5	0.5	0.6	0.4	3.7	3.6	2.7
	Koyali (1965)	13.7	13.5	13.1	1.3	1.3	1.0	6.8	7.9	6.3
	Haldia (1975)	8.0	8.0	6.5	0.4	0.7	0.6	4.3	5.0	3.3
	Mathura (1982)	8.0	9.7	8.9	0.9	0.9	0.7	6.1	5.5	4.7
	Panipat (1998)	15.0	15.3	15.0	1.3	1.4	1.2	8.4	9.5	6.9
	Guwahati (1962)	1.0	0.9	0.9	0.08	0.07	0.08	0.6	0.5	0.4
	Digboi (1901)	0.65	0.7	0.7	0.06	0.06	0.06	0.4	0.4	0.4
	Bongaigaon(1979)	2.35	2.5	2.0	0.2	0.2	0.2	1.4	1.5	1.4
	Paradip (2016)	15.0	14.6	15.8	1.4	1.3	1.3	9.1	7.7	6.5
	IOCL-TOTAL	69.7	71.8	69.4	6.0	6.6	5.7	40.9	41.7	32.6
CPCL	Manali (1969)	10.5	10.3	10.2	0.7	0.9	0.7	5.9	4.5	4.1
	CBR (1993)	1.0	0.4	0.0	0.0	0.0	0.0	0.0	0.0	0.0
	CPCL-TOTAL	11.5	10.7	10.2	0.7	0.9	0.7	5.9	4.5	4.1
BPCL	Mumbai (1955)	12.0	14.8	15.0	1.4	1.3	1.1	8.4	8.7	6.5
	Kochi (1966)	15.5	16.1	16.5	1.3	1.4	1.1	9.5	9.2	6.2
BORL	Bina (2011)	7.8	5.7	7.9	0.7	0.7	0.6	4.4	4.6	3.1
NRL	Numaligarh (1999)	3.0	2.9	2.4	0.2	0.2	0.2	1.6	1.6	1.5
	BPCL-TOTAL	38.3	39.4	41.8	3.6	3.6	2.9	24.0	24.0	17.4

Company	Refinery	Installed capacity (1.11.2020) (MMTPA)	Crude oil processing (MMT)							
			2018-19	2019-20	October			April-October		
					2019-20	2020-21 (Target)	2020-21 (P)	2019-20	2020-21 (Target)	2020-21 (P)
ONGC	Tatipaka (2001)	0.066	0.066	0.087	0.007	0.006	0.007	0.051	0.036	0.045
MRPL	Mangalore (1996)	15.0	16.2	14.0	1.4	1.4	0.7	7.4	8.5	5.1
	ONGC-TOTAL	15.1	16.3	14.0	1.4	1.4	0.7	7.5	8.5	5.1
HPCL	Mumbai (1954)	7.5	8.7	8.1	0.8	0.1	0.5	4.6	4.4	4.2
	Visakh (1957)	8.3	9.8	9.1	0.6	0.8	0.8	5.3	5.7	5.1
HMEL	Bathinda (2012)	11.3	12.5	12.2	1.1	0.6	1.0	7.0	4.0	6.2
	HPCL- TOTAL	27.1	30.9	29.4	2.5	1.5	2.3	16.8	14.1	15.5
RIL	Jamnagar (DTA) (1999)	33.0	31.8	33.0	2.9	2.9	3.0	18.4	18.4	19.8
	Jamnagar (SEZ) (2008)	35.2	37.4	35.9	2.9	2.9	2.4	22.0	22.0	14.6
NEL	Vadinar (2006)	20.0	18.9	20.6	1.8	1.8	0.6	12.2	12.2	9.5
All India (MMT)		249.9	257.2	254.4	21.9	21.7	18.4	147.7	145.3	118.6
All India (Million Bbl/Day)		5.02	5.17	5.09	5.18		4.35	5.06		4.06

Note: Provisional Targets; Some sub-totals/ totals may not add up due to rounding off at individual levels.

9. Major crude oil and product pipeline network (as on 01.11.2020)										
Details		ONGC	OIL	Cairn	HMEL	IOCL	BPCL	HPCL	Others*	Total
Crude Oil	Length (KM)	1,283	1,193	688	1,017	5,301	937			10,419
	Cap (MMTPA)	60.6	9.0	10.7	11.3	48.6	7.8			147.9
Products	Length (KM)		654			9,400	2,241	3,775	2,395	18,465
	Cap (MMTPA)		1.7			46.0	19.5	34.7	9.4	111.3

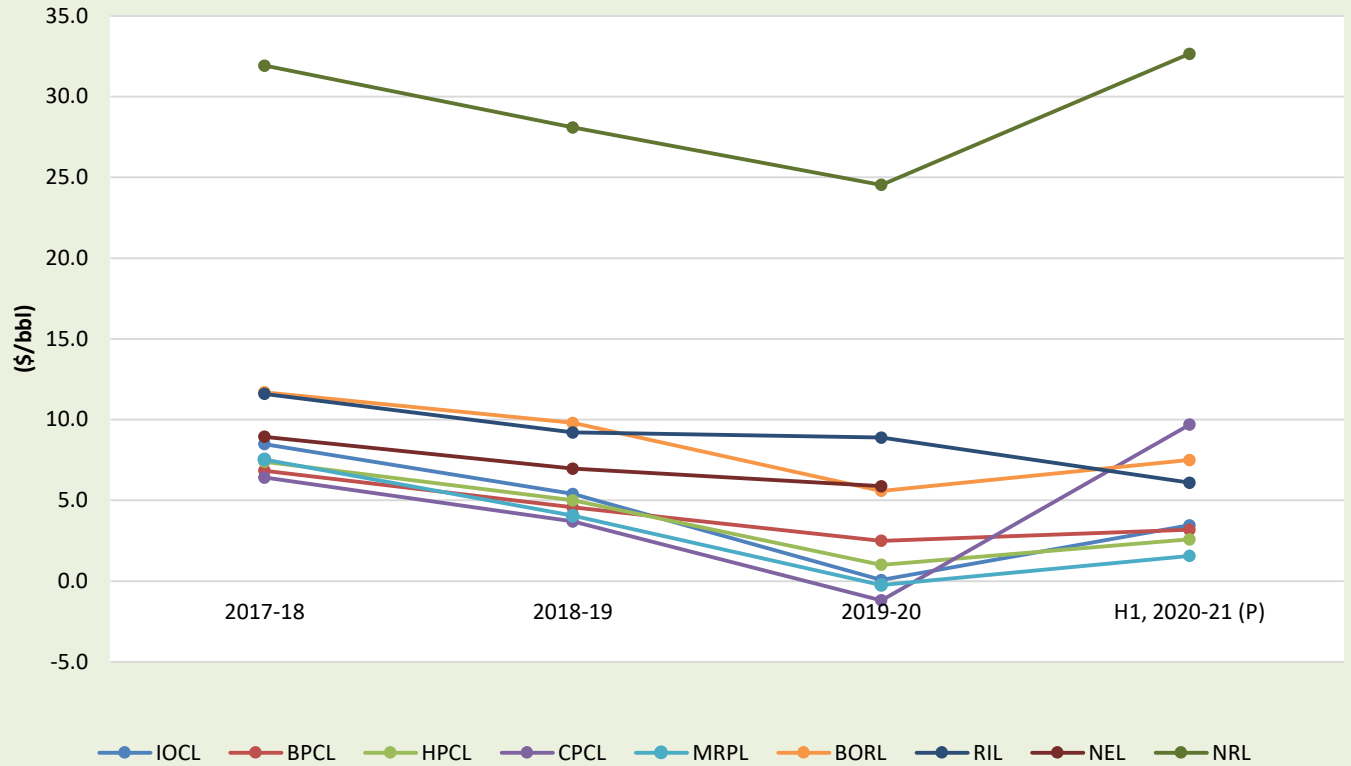
*Others include GAIL and Petronet India. HPCL and BPCL lubes pipeline included in products pipeline data

10. Gross Refining Margins (GRM) of refineries (\$/bbl)

Company	Refinery	2017-18	2018-19	2019-20	H1, 2020-21 (P)
IOCL	Barauni	6.60	3.86	-1.24	0.05
	Koyali	9.44	4.87	1.90	1.53
	Haldia	6.86	5.36	-2.44	2.16
	Mathura	7.09	4.65	-1.02	2.51
	Panipat	7.74	4.66	-0.25	0.18
	Guwahati **	21.88	16.35	14.22	28.19
	Digboi **	24.86	22.74	17.52	24.63
	Bongaigaon **	20.62	16.94	10.49	24.28
	Paradip	7.02	4.46	-1.80	4.23
	Weighted average	8.49	5.41	0.08	3.46
BPCL	Kochi	6.44	4.27	2.17	3.89
	Mumbai	7.26	4.92	2.88	2.54
	Weighted average	6.85	4.58	2.50	3.19
HPCL	Mumbai	8.35	5.79	3.63	3.26
	Visakhapatnam	6.55	4.31	-1.30	2.00
	Weighted average	7.40	5.01	1.02	2.58
CPCL	Chennai	6.42	3.70	-1.18	9.70
MRPL	Mangalore	7.54	4.06	-0.23	1.55
NRL	Numaligarh **	31.92	28.11	24.55	32.67
BORL	Bina	11.70	9.80	5.60	7.50
RIL	Jamnagar	11.60	9.20	8.90	6.10
NEL [@]	Vadinar	8.95	6.97	5.88	*

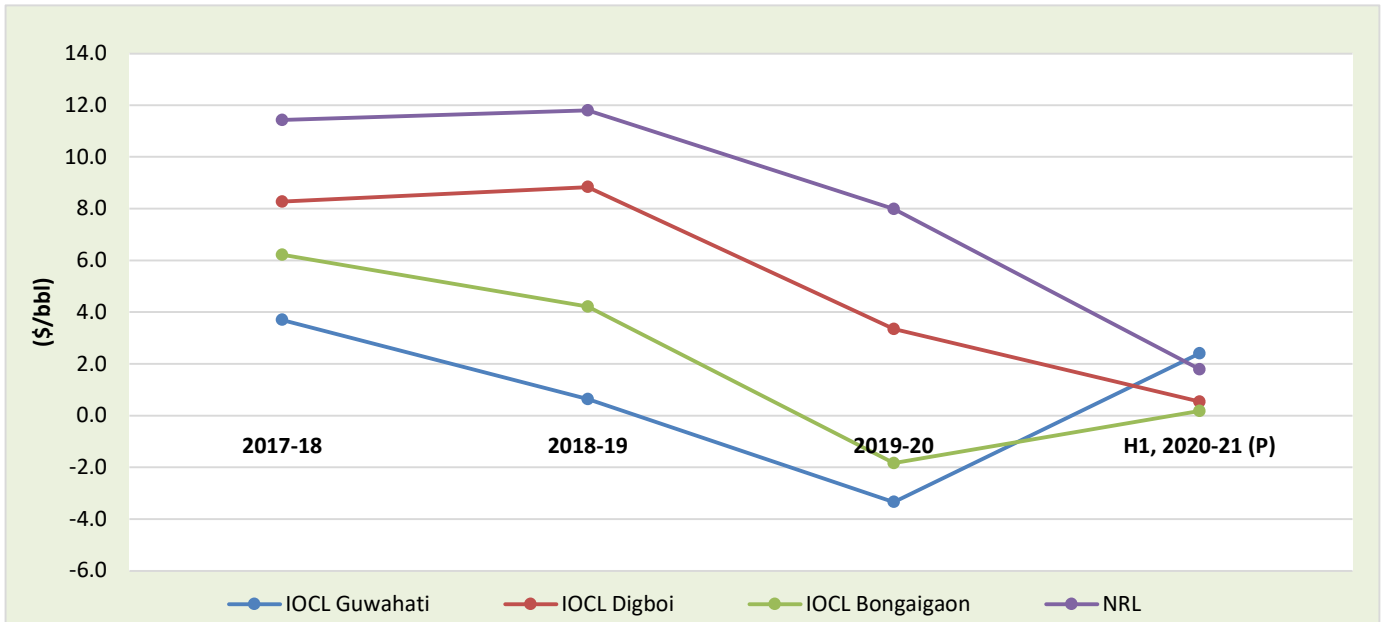
*Not available; ** GRM of North Eastern refineries are including excise duty benefit. For GRM excluding excise duty benefit, refer table 11; HMEI data not available; @Nayara Energy Limited (formerly Essar Oil Limited)

Gross Refining Margins (GRM) of refineries (\$/bbl)



11. GRM of North-East refineries excluding excise duty benefit (\$/bbl)

Company	Refinery	2017-18	2018-19	2019-20	H1, 2020-21 (P)
IOCL	Guwahati	3.70	0.63	-3.34	2.40
	Digboi	8.27	8.84	3.35	0.54
	Bongaigaon	6.22	4.21	-1.84	0.18
NRL	Numaligarh	11.43	11.80	7.99	1.79





PART-C

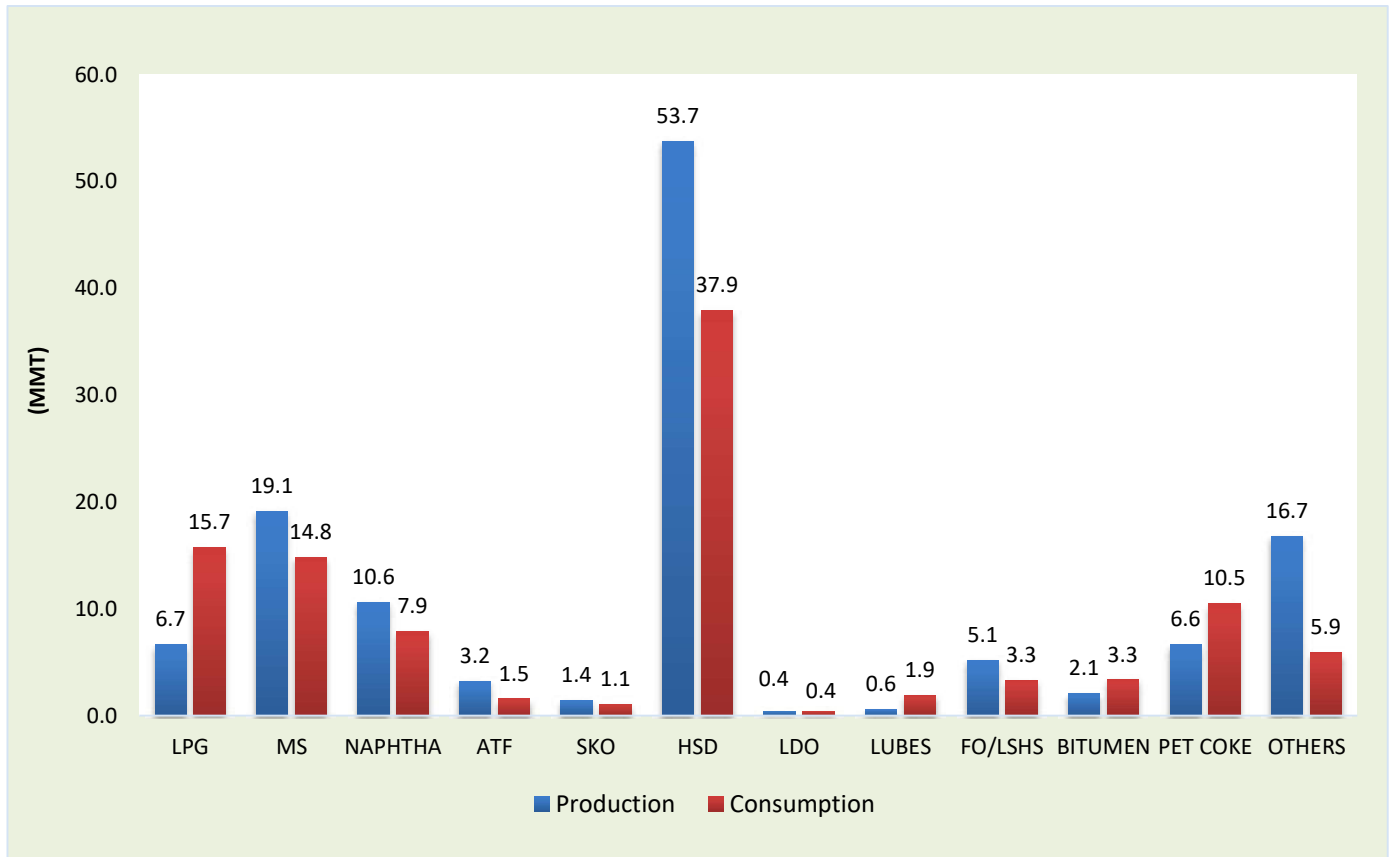
Consumption

12. Production and consumption of petroleum products (Million Metric Tonnes)

Products	2018-19		2019-20		October 2019		October 2020 (P)		Apr-Oct 2019		Apr-Oct 2020 (P)	
	Prod	Cons	Prod	Cons	Prod	Cons	Prod	Cons	Prod	Cons	Prod	Cons
LPG	12.8	24.9	12.8	26.3	1.2	2.3	1.0	2.4	7.3	14.9	6.7	15.7
MS	38.0	28.3	38.6	30.0	3.4	2.5	3.1	2.7	22.6	17.8	19.1	14.8
NAPHTHA	19.6	14.1	20.6	14.3	1.8	1.1	1.6	1.3	11.1	7.8	10.6	7.9
ATF	15.5	8.3	15.2	8.0	1.4	0.7	0.5	0.4	8.9	4.7	3.2	1.5
SKO	4.1	3.5	3.2	2.4	0.2	0.2	0.2	0.1	1.9	1.6	1.4	1.1
HSD	110.6	83.5	111.1	82.6	9.6	6.5	8.0	7.0	64.5	47.9	53.7	37.9
LDO	0.7	0.6	0.6	0.6	0.1	0.0	0.1	0.1	0.4	0.4	0.4	0.4
LUBES	0.9	3.7	0.9	3.8	0.1	0.3	0.1	0.3	0.5	2.2	0.6	1.9
FO/LSHS	10.0	6.6	9.3	6.3	0.9	0.5	0.7	0.5	5.7	3.5	5.1	3.3
BITUMEN	5.6	6.7	4.9	6.7	0.3	0.4	0.4	0.7	2.6	3.4	2.1	3.3
PET COKE	13.7	21.3	14.6	21.7	1.3	1.7	0.9	1.4	8.1	13.0	6.6	10.5
OTHERS	31.0	11.7	31.0	11.4	2.5	1.0	2.3	0.9	17.3	6.8	16.7	5.9
ALL INDIA	262.4	213.2	262.9	214.1	22.7	17.3	18.9	17.8	150.9	123.9	126.2	104.2
Growth (%)	3.2%	3.4%	0.2%	0.4%	0.4%	-1.8%	-17.0%	2.5%	-1.7%	1.6%	-16.4%	-15.9%

Note: Prod - Production; Cons - Consumption

Petroleum Products: April-October 2020 (MMT)



13. Kerosene allocation vs upliftment (Kilo Litres)

Product	2017-18		2018-19		2019-20		2020-21 (P)*	
	Allocation	Upliftment	Allocation	Upliftment	Allocation	Upliftment	Allocation	Upliftment
PDS Kerosene	50,21,828	46,69,160	44,32,994	41,52,112	31,21,328	27,93,217	17,97,532	12,19,849

*PDS SKO allocation is for Apr-Dec 2020 and upliftment is for Apr-Oct 2020

14. Ethanol blending programme

Particulars	Ethanol Supply Year *			
	2016-17	2017-18	2018-19 (P)	2019-20 (P) (Dec 2019-Oct 2020)
Ethanol received by PSU OMCs under EBP Program (in Cr. Litrs)	66.5	150.5	188.6	157.5
Average Percentage of Blending Sales (EBP%)	2.0%	4.2%	5.0%	5.0%

*Ethanol Supply Year : Ethanol supplies take place between 1st December of the present year to 30th November of the following year.

Note: With effect from 01.04.2019, EBP Programme has been extended to whole of India except UTs of Andaman and Nicobar Islands and Lakshadweep.

15. Industry marketing infrastructure (as on 01.11.2020) (Provisional)

Particulars	IOCL	BPCL	HPCL	RIL/RBML*	NEL	SHELL	Others	Total
POL Terminal/ Depots (Nos.) [§]	118	78	80	18	3	-	6	303
Aviation Fuel Stations (Nos.) [@]	119	61	44	31	-	-	1	256
Retail Outlets (total) (Nos.), [^]	30,394	17,355	17,370	1,407	5,852	224	9	72,611
out of which Rural ROs	9,182	3,761	4,174	127	1,943	37	-	19,224
SKO/LDO agencies (Nos.)	3,871	930	1,638	-	-	-	-	6,439
LPG Distributors (total) (Nos.) (PSUs only)	12,575	6,159	6,154	-	-	-	-	24,888
LPG Bottling plants (Nos.) (PSUs only) [#]	92	53	50	-	-	-	3	198
LPG Bottling capacity (TMTPA) (PSUs only) ^{&}	10,086	4,710	5,642	-	-	-	173	20,611
LPG active domestic consumers (Nos. crore) (PSUs only)	13.4	7.3	7.8	-	-	-	-	28.5

[§](Others=4 MRPL & 2 NRL); [@](Others=ShellMRPL -1); [^](Others=MRPL-9); [#](Others=NRL-1, OIL-1, CPCL-1); [&](Others=NRL-30, OIL-23, CPCL-120); *RBML- Reliance



पहल
... एक नई दिशा
प्रत्यक्ष हस्तान्तरित लाभ

अपना धन पाओ,
जन धन बचाओ.



#GiveltUp
Feel the Joy of Giving



उज्ज्वला
www.pga.sangrethi.com

PART-D

LPG

16. LPG consumption (Thousand Metric Tonne)								
LPG category	2018-19	2019-20	October			April-October		
			2019-20	2020-21 (P)	Gr (%)	2019-20	2020-21 (P)	Gr (%)
1. PSU Sales :								
LPG-Packed Domestic	21,728.0	23,076.0	2,052.7	2,166.1	5.5	12,989.3	14,579.7	12.2
LPG-Packed Non-Domestic	2,364.4	2,614.4	240.3	196.9	-18.0	1,474.9	833.1	-43.5
LPG-Bulk	318.1	263.5	26.3	35.3	34.1	163.6	176.2	7.7
Auto LPG	180.3	171.9	15.3	12.4	-19.0	102.5	55.7	-45.6
Sub-Total (PSU Sales)	24,590.8	26,125.7	2,334.5	2,410.6	3.3	14,730.3	15,644.8	6.2
2. Direct Private Imports*	316.0	204.0	13.6	11.9	-12.9	150.4	55.5	-63.1
Total (1+2)	24,906.8	26,329.8	2,348.1	2,422.5	3.2	14,880.7	15,700.3	5.5

*Jul-Oct 2020 DGCIS data are prorated.

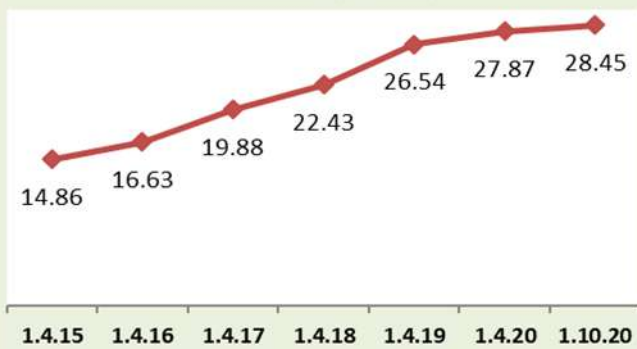
17. LPG marketing at a glance														
Particulars (As on 1st of April)	Unit	2009	2010	2011	2012	2013	2014	2015	2016	2017	2018	2019	2020	1.10.2020 (P)
		LPG Active Domestic Customers	(Lakh)							1486	1663	1988	2243	2654
	Growth								11.9%	19.6%	12.8%	18.3%	5.0%	2.1%
LPG Coverage (Estimated)	(Percent)							56.2	61.9	72.8	80.9	94.3	97.5	98.8
	Growth								10.1%	17.6%	11.1%	16.5%	3.4%	1.4%
PMUY Beneficiaries	(Lakh)									200	356	719	802	801
	Growth										77.7%	101.9%	11.5%	-0.1%
LPG Distributors	(No.)	9366	9686	10541	11489	12610	13896	15930	17916	18786	20146	23737	24670	24836
	Growth	0.0%	3.4%	8.8%	9.0%	9.8%	10.2%	14.6%	12.5%	4.9%	7.2%	17.8%	3.9%	0.7%
Auto LPG Dispensing Stations	(No.)	447	536	604	652	667	678	681	676	675	672	661	657	657
	Growth	36.7%	19.9%	12.7%	7.9%	2.3%	1.6%	0.4%	-0.7%	-0.1%	-0.4%	-1.6%	-0.6%	0.0%
Bottling Plants	(No.)	182	182	183	184	185	187	187	188	189	190	192	196	198
	Growth	0.6%	0.0%	0.5%	0.5%	0.5%	1.1%	0.0%	0.5%	0.5%	0.5%	1.1%	2.1%	1.6%

Source: PSU OMCs (IOCL, BPCL and HPCL)

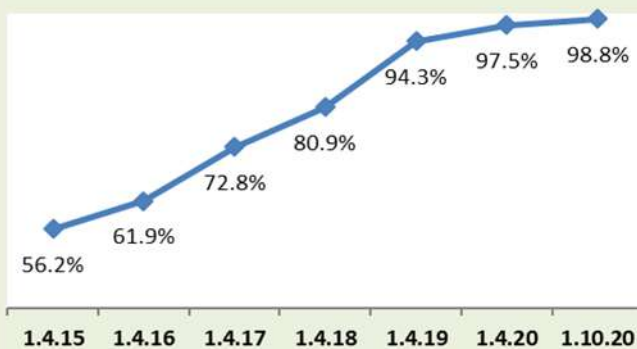
1. All growth rates as on 1.10.2020 are w.r.t figures as on 1.10.2019. All growth rates as on 1 April of any year are w.r.t. figures as on 1 April of previous year.

2. LPG coverage has been estimated based on active domestic LPG connections of PSU OMCs divided by households estimated by extrapolating decadal growth of 2001-11 on households in 2011 as per Census 2011 figures.

Growth trend in active LPG domestic customers (In Crore)



Growth trend in LPG coverage



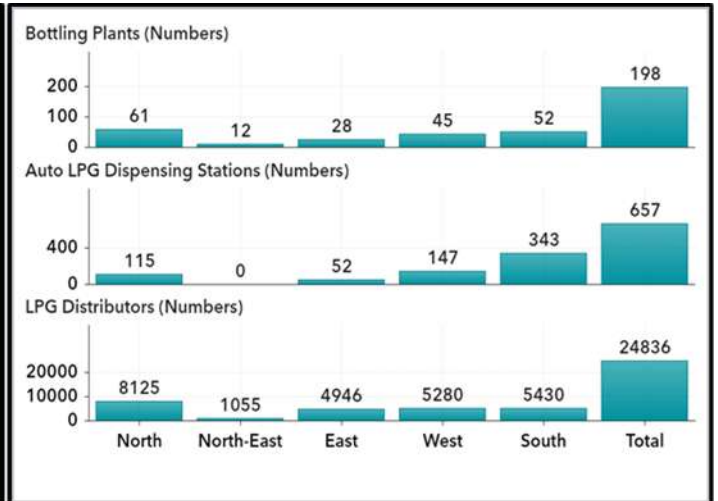
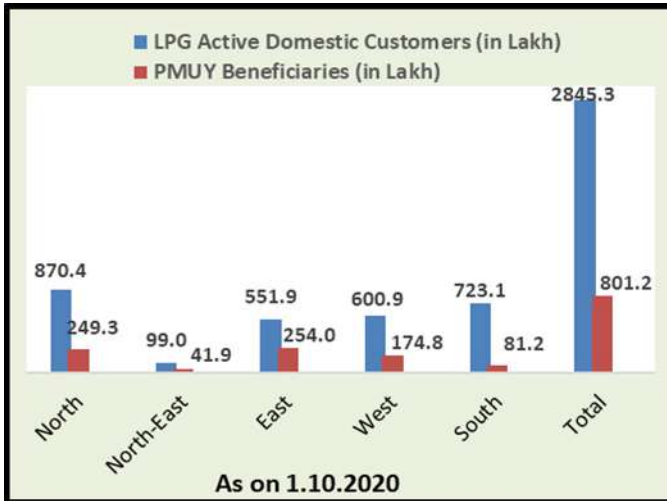
Growth trend in LPG distributors



18-Region-wise data on LPG marketing (As on 1.10.2020)

Particulars	North	North-East	East	West	South	Total
LPG Active Domestic Customers (in Lakh)	870.4	99.0	551.9	600.9	723.1	2845.3
LPG Coverage (Estimated)	113.1%	91.7%	85.1%	89.4%	106.1%	98.8%
PMUY Beneficiaries (in Lakh)	249.3	41.9	254.0	174.8	81.2	801.2
Non-domestic LPG customers (in Lakh)	6.4	0.7	3.3	8.3	14.1	32.9
LPG Distributors (Numbers)	8125	1055	4946	5280	5430	24836
Auto LPG Dispensing Stations (Numbers)	115	0	52	147	343	657
Bottling Plants* (Numbers)	61	12	28	45	52	198

*Includes Numaligarh BP, Duliajan BP and CPCL BP.





PART-E

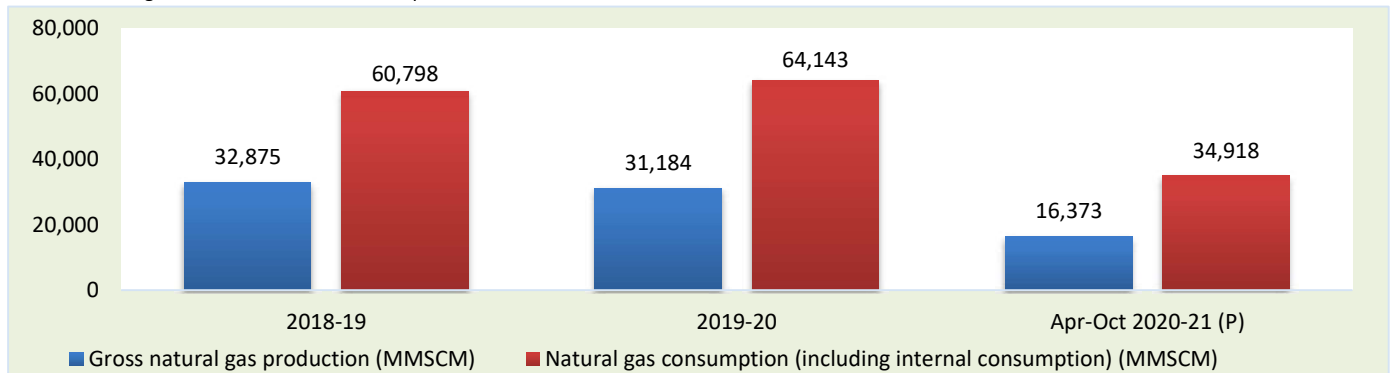
Natural Gas

19. Natural gas at a glance

(MMSCM)

Details	2018-19	2019-20	October			April-October		
			2019-20	2020-21 (Target)*	2020-21 (P)	2019-20	2020-21 (Target)*	2020-21 (P)
(a) Gross production	32,875	31,184	2,641	2,957	2,419	18,646	19,016	16,373
- ONGC	24,677	23,746	1,954	2,061	1,884	14,026	14,294	12,863
- Oil India Limited (OIL)	2,722	2,668	239	290	222	1,624	1,850	1,464
- Private / Joint Ventures (JVs)	5,477	4,770	447	606	313	2,996	2,872	2,045
(b) Net production (excluding flare gas and loss)	32,058	30,257	2,569		2,348	18,108		15,840
(c) LNG import [#]	28,740	33,887	2,826		3,280	19,243		19,078
(d) Total consumption including internal consumption (b+c)	60,798	64,143	5,396		5,628	37,351		34,918
(e) Total consumption (in BCM)	60.8	64.1	5.4		5.6	37.4		34.9
(f) Import dependency based on consumption (%), {c/d*100}	47.3	52.8	52.4		58.3	51.5		54.6

*Provisional targets; [#]Jul-Oct 2020 DGCIS data prorated.



20. Coal Bed Methane (CBM) gas development in India

Prognosticated CBM resources		92	TCF
Established CBM resources		9.9	TCF
Total available coal bearing areas		26,000	Sq. KM
Area awarded		16,613	Sq. KM
Exploration initiated		9,336	Sq. KM
Blocks awarded		33	Nos.
Production of CBM gas	October 2020 (P)	54.1	MMSCM
Production of CBM gas	April-October 2020 (P)	367.1	MMSCM

21. Natural gas pipeline network as on 30.06.2020

Nature of pipeline		GAIL	GSPL	PIL	IOCL	AGCL	RGPL	GGL	DFPCL	ONGC	GIGL	GITL	Others*	Total
Operational	Length	8,241	2,265	1,460	132	105	312	73	42	24				12,654
	Capacity	171.6	43.0	85.0	20.0	2.4	3.5	5.1	0.7	6.0				337.3
Partially commissioned#	Length	3,533			23						442	364		4,362
	Capacity	-			-						-	-		-
Total operational length		11,774	2,265	1,460	155	105	312	73	42	24	442	364		17,016
Under construction	Length	6,352			1,398						2,335	1,678	3,780	15,543
	Capacity	-			-						-	-	-	-
Total length		18,126	2,265	1,460	1,553	105	312	73	42	24	2,777	2,042	3,780	32,559

Source: PNGRB; *Others-APGDC, HEPL, IGGL, IMC, Consortium of H-Energy; #Operating length

22. Existing LNG terminals

Location	Promoters	Capacity as on 01.11.2020	% Capacity utilisation (Apr-Sep 2020)
Dahej**	Petronet LNG Ltd (PLL)	17.5 MMTPA	92.0
Hazira	Shell Energy India Pvt. Ltd.	5 MMTPA	96.5
Dabhol	Konkan LNG Limited	*5 MMTPA	25.6
Kochi**	Petronet LNG Ltd (PLL)	5 MMTPA	15.5
Ennore	Indian Oil LNG Pvt Ltd	5 MMTPA	10.8
Mundra	GSPC LNG Limited	5 MMTPA	35.2
Total Capacity		42.5 MMTPA	

* To increase to 5 MMTPA with breakwater. Only HP stream of capacity of 2.9 MMTPA is commissioned; **up to August 2020

23. Status of PNG connections and CNG stations across India (Nos.), As on 30.09.2020 (P)

Geographical Area/CGD Networks	State/Union Territory	Authorized CGD Entity	CNG stations	PNG connections		
				Domestic	Commercial	Industrial
Kakinada	Andhra Pradesh	Bhagyanagar Gas Limited	10	47,492	109	2
East Godavari District (EAAA)		Godavari Gas Private Limited	13	28,704	4	0
West Godavari District		Godavari Gas Private Limited	11	28,322	11	1
Vijaywada		Bhagyanagar Gas Limited	23	27,529	17	0
Krishna District (EAAA)		Megha Engineering & Infrastructure Limited	12	8,367	75	14
Andhra Pradesh Total			69	140,414	216	17
Chittoor, Kolar and Vellore Districts	Andhra Pradesh, Karnataka & Tamil Nadu	AGP City Gas Private Limited	0	0	0	1
Andhra Pradesh, Karnataka & Tamil Nadu Total			0	0	0	1
Upper Assam	Assam	Assam Gas Company Limited	1	35,289	1,147	404
Assam Total			1	35,289	1,147	404
Patna District	Bihar	GAIL (India) Limited	8	16,196	8	0
Aurangabad, Kaimur & Rohtas Districts	Bihar	Indian Oil Corporation Limited	1	0	0	0
Bihar Total			9	16,196	8	0
Chandigarh	Chandigarh (UT), Haryana, Punjab & Himachal Pradesh	Indian-Oil Adani Gas Private Limited	13	111,074	32	6
Chandigarh (UT), Haryana, Punjab & Himachal Pradesh Total			13	111,074	32	6
UT of Dadra & Nagar Haveli	Dadra & Nagar Haveli (UT)	Gujarat Gas Limited	7	5,551	48	41
Dadra & Nagar Haveli (UT) Total			7	5,551	48	41
UT of Daman	Daman & Diu (UT)	Indian-Oil Adani Gas Private Limited	4	3,537	24	24
Daman & Diu (UT) Total			4	3,537	24	24
Diu & Gir Somnath Districts	Daman and Diu & Gujarat	IRM Energy Private Limited	8	0	0	0
Daman and Diu & Gujarat Total			8	0	0	0
North Goa District	Goa	Goa Natural Gas Private Limited	2	3,927	0	2
Goa Total			2	3,927	0	2
Surat, Bharuch, Ankleshwar	Gujarat	Gujarat Gas Limited	101	665,478	9,164	986
Ahmedabad City and Daskroi Area		Adani Gas Limited	65	391,331	3,406	845
Rajkot		Gujarat Gas Limited	62	240,376	1,377	966
Gandhinagar Mehsana Sabarkantha		Sabarmati Gas Limited	96	189,565	841	340
Vadodara		Vadodara Gas Limited	19	159,755	2,585	2
Gandhinagar		Gujarat Gas Limited	14	122,803	523	26
Valsad		Gujarat Gas Limited	25	105,806	326	675
Navsari		Gujarat Gas Limited	23	102,178	247	51
Nadiad		Gujarat Gas Limited	25	63,254	366	18
Anand District (EAAA)		Gujarat Gas Limited	24	36,785	236	13
Hazira		Gujarat Gas Limited	1	35,679	121	16
Anand area including Kanjari & Vadtal Villages (in Kheda District)		Charotar Gas Sahakari Mandali Limited	6	32,189	663	129
Bhavnagar		Gujarat Gas Limited	21	32,125	252	58
Surendranagar		Gujarat Gas Limited	18	24,773	208	359
Banaskantha District		IRM Energy Private Limited	26	20,203	83	10
Jamnagar		Gujarat Gas Limited	18	18,628	139	83
Panchmahal District		Gujarat Gas Limited	24	15,056	83	79
Patan District		Sabarmati Gas Limited	18	9,502	14	5
Amreli District		Gujarat Gas Limited	13	4,019	16	1

Geographical Area/CGD Networks	State/Union Territory	Authorized CGD Entity	CNG stations	PNG connections		
				Domestic	Commercial	Industrial
Dahod District		Gujarat Gas Limited	9	2,560	6	12
Kutch (West)		Gujarat Gas Limited	12	1,051	20	0
Dahej Vagra Taluka		Gujarat Gas Limited	4	781	12	23
Vadodara		Adani Gas Limited	6	616	1	88
Ahmedabad City (Only for CNG)		Hindustan Petroleum Corporation Limited	22	-	-	-
Junagadh District		Torrent Gas Private Limited	9	0	0	0
Ahmedabad District (EAAA)		Gujarat Gas Limited	8	0	0	0
Kheda District (EAAA) & Mahisagar District		Adani Gas Limited	6	0	0	0
Surendranagar District (EAAA) & Morbi District (EAAA)		Adani Gas Limited	3	0	0	0
Narmada (Rajpipla) District		Gujarat Gas Limited	3	0	0	0
Porbandar District		Adani Gas Limited	3	0	0	0
Barwala & Ranpur Talukas		Adani Gas Limited	2	0	0	0
Navsari District (EAAA), Surat District (EAAA), Tapi District (EAAA) & the Dangs District		Adani Gas Limited	2	0	0	0
		Gujarat Total	688	2,274,513	20,689	4,785
Faridabad		Adani Gas Limited	17	58,355	157	347
Sonipat		GAIL Gas Limited	16	23,370	39	137
Gurugram		Haryana City Gas Distribution Limited	26	21,224	135	136
Panipat District		Indian-Oil Adani Gas Private Limited	8	16,939	6	18
Rewari District		Indraprastha Gas Limited	12	7,690	9	54
Karnal District		Indraprastha Gas Limited	7	5,904	0	0
Yamunanagar District		Bharat Petroleum Corporation Limited	4	5,618	0	0
Ambala & Kurukshetra Districts		HPOL Gas Private Limited	3	2,897	0	0
Kaithal District	Haryana	Indraprastha Gas Limited	2	2,460	0	0
Nuh and Palwal Districts		Adani Gas Limited	5	1,474	2	32
Rohtak District		Bharat Petroleum Corporation Limited	1	591	0	0
Jhajjar District		Haryana City Gas (KCE) Private Limited	2	24	0	0
Sonipat District (EAAA) & Jind District		Hindustan Petroleum Corporation Limited	6	0	0	0
Bhiwani, Charkhi Dadri & Mahendragarh Districts		Adani Gas Limited	4	0	0	0
Hisar District		HCG (KCE) Private Limited	1	0	0	0
Gurugram		Indraprastha Gas Limited	7	10290	19	2
		Haryana Total	121	156836	367	726
Panchkula District (EAAA), Sirmaur, Shimla & Solan (EAAA) Districts	Haryana & Himachal Pradesh	Indian-Oil Adani Gas Private Limited	1	0	0	0
		Haryana & Himachal Pradesh Total	1	0	0	0
Sirsa, Fatehabad and Mansa (Punjab) Districts	Haryana & Punjab	Gujarat Gas Limited	3	0	0	0
		Haryana & Punjab Total	3	0	0	0
Ranchi District	Jharkhand	GAIL (India) Limited	4	8,602	0	0
East Singhbhum District		GAIL (India) Limited	4	6,530	0	0
		Jharkhand Total	8	15,132	0	0
Giridih & Dhanbad Districts	Jharkhand	GAIL Gas Limited	0	2,154	0	0
Bokaro, Hazaribagh & Ramgarh Districts	Jharkhand	Indian Oil Corporation Limited	5	0	0	0
		Jharkhand Total	5	2,154	0	0
Bengaluru Rural and Urban Districts		GAIL Gas Limited	23	157,557	186	118
Tumkur District		Megha Engineering & Infrastructure Limited	0	13,576	78	29

Geographical Area/CGD Networks	State/Union Territory	Authorized CGD Entity	CNG stations	PNG connections		
				Domestic	Commercial	Industrial
Belgaum District	Karnataka	Megha Engineering & Infrastructure Limited	2	9,937	51	18
Dharwad District		Indian-Oil Adani Gas Private Limited	2	8,805	1	0
Dakshina Kannada District*		GAIL Gas Limited	3	2,225	0	0
Ramanagara District		Maharashtra Natural Gas Limited	4	0	0	1
Karnataka Total			34	192,100	316	166
Ernakulam District	Kerala	Indian-Oil Adani Gas Private Limited	8	41,831	9	8
Alapuzha, Kollam and Thiruvananthapuram Districts		AGP City Gas Private Limited	0	0	0	1
Kerala Total			8	41,831	9	9
Indore (including Ujjain City)	Madhya Pradesh	Aavantika Gas Limited	39	55,701	92	216
Gwalior		Aavantika Gas Limited	15	21,023	42	5
Dewas		GAIL Gas Limited	3	11,864	28	40
Dhar District		Naveriya Gas Private Limited	2	390	9	0
Bhopal & Rajgarh Districts		Think Gas Bhopal Private Limited	5	0	0	0
Gwalior (EAAA) District and Sheopor District		Rajasthan State Gas Limited	2	0	0	0
Rewa District		Indian Oil Corporation Limited	1	0	0	0
Ujjain (EAAA) District, Dewas (EAAA) District and Indore (EAAA) District		Gujarat Gas Limited	1	0	0	0
Madhya Pradesh Total			68	88,978	171	261
Jhabua, Banswara, Ratlam and Dungarpur Districts	Madhya Pradesh and Rajasthan	Gujarat Gas Limited	2	0	0	0
Madhya Pradesh and Rajasthan Total			2	0	0	0
Jhansi (EAAA) District, Bhind, Jalaun, Lalitpur and Datia Districts	Madhya Pradesh and Uttar Pradesh	Adani Gas Limited	2	0	0	0
Madhya Pradesh and Uttar Pradesh Total			2	0	0	0
Mumbai & Greater Mumbai	Maharashtra	Mahanagar Gas Limited	140	899,706	3084	16
Thane urban and adjoining Municipalities		Mahanagar Gas Limited	105	572,769	886	59
Pune City including Pimpri - Chichwad & adjoining contigeneous areas Hinjewadi, Chakan, Talegaon		Maharashtra Natural Gas Limited	85	279,965	365	219
Raigarh District (EAAA)		Mahanagar Gas Limited	15	26,505	0	1
Ratnagiri District		Unison Enviro Private Limited	12	780	1	18
Pune District (EAAA)		Torrent Gas Pune Limited	15	423	0	2
Palghar District & Thane Rural		Gujarat Gas Limited	13	262	9	16
Kolhapur District		HPoil Gas Private Limited	4	218	0	0
Sindhudurg District		Maharashtra Natural Gas Limited	2	0	0	0
Latur & Osmanabad Districts		Unison Enviro Private Limited	1	0	0	0
Maharashtra Total			392	1,780,628	4,345	331
Valsad (EAAA), Dhule & Nashik Districts	Maharashtra & Gujarat	Maharashtra Natural Gas Limited	7	0	0	0
Maharashtra & Gujarat Total			7	0	0	0
National Capital Territory of Delhi	National Capital Territory of Delhi (UT)	Indraprastha Gas Limited	419	945309	2437	1427
National Capital Territory of Delhi (UT) Total			419	945309	2437	1427
Khordha District	Odisha	GAIL (India) Limited	9	7,766	0	0
Cuttack District		GAIL (India) Limited	6	3,882	0	0
Sundargarh & Jharsuguda Districts		GAIL Gas Limited	2	0	0	0
Ganjam, Nayagarh & Puri Districts		GAIL Gas Limited	2	0	0	0
Odisha Total			19	11,648	0	0
Rupnagar District		Bharat Petroleum Corporation Limited	6	4,500	0	0
Amritsar District		Gujarat Gas Limited	10	2,114	14	0

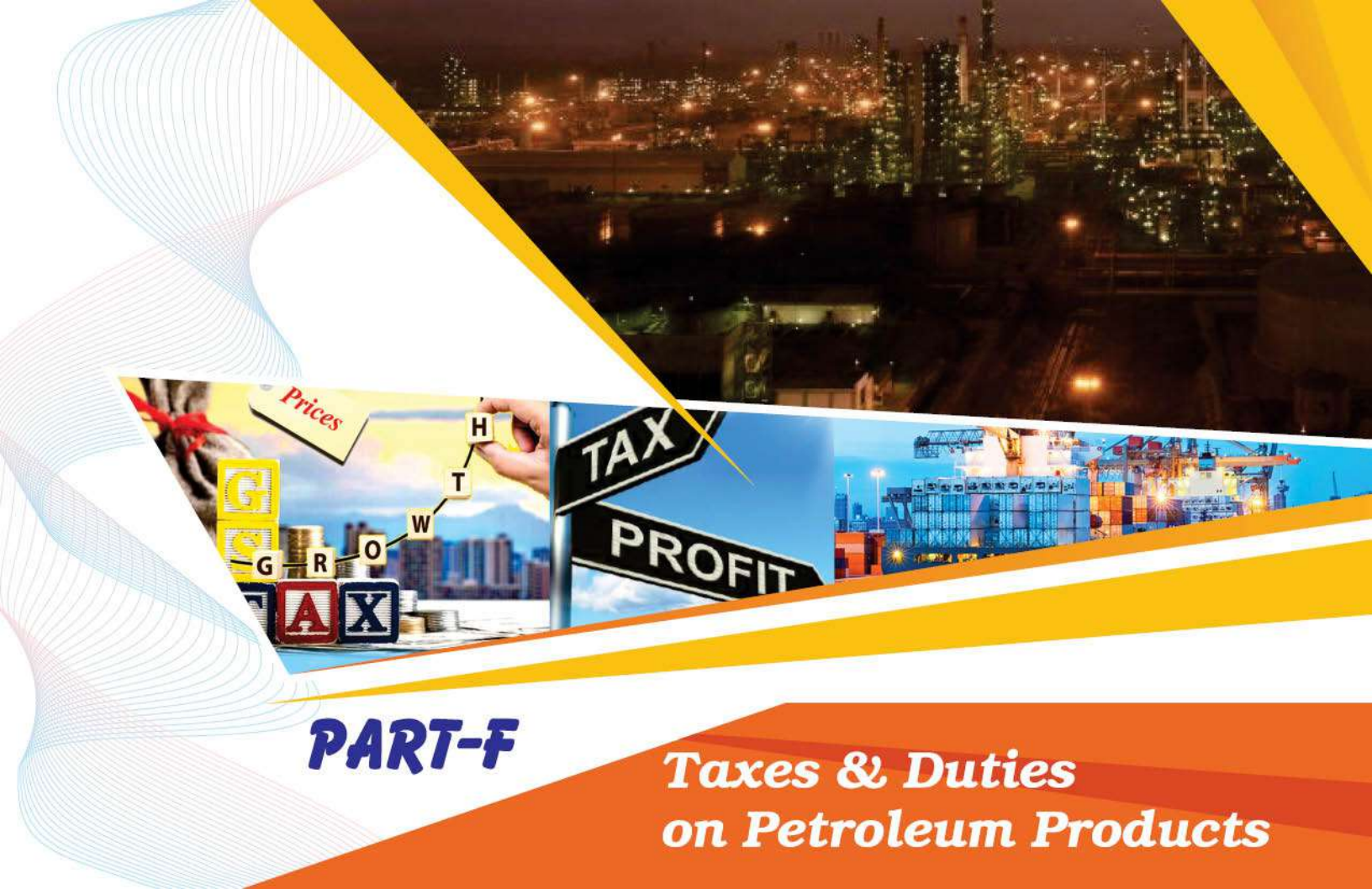
Geographical Area/CGD Networks	State/Union Territory	Authorized CGD Entity	CNG stations	PNG connections		
				Domestic	Commercial	Industrial
Fatehgarh Sahib District	Punjab	IRM Energy Private Limited	5	1,266	11	24
Bhatinda District		Gujarat Gas Limited	2	187	0	0
SAS Nagar District (EAAA), Patiala & Sangrur Districts		Torrent Gas Private Limited	11	0	0	0
Jalandhar District (EAAA), Kapurthala & SBS Nagar Districts		Think Gas Ludhiana Private Limited	9	0	0	0
Ludhiana District (EAAA), Barnala & Moga Districts		Think Gas Ludhiana Private Limited	7	0	0	0
Jalandhar		Jay Madhok Energy Private Limited led Consortium	3	0	0	0
Ludhiana		Jay Madhok Energy Private Limited led Consortium	3	0	0	0
Hoshiarpur and Gurdaspur Districts		Gujarat Gas Limited	3	0	0	0
Punjab Total			59	8,067	25	24
Kota	Rajasthan	Rajasthan State Gas Limited	8	11,712	17	15
Ajmer, Pali and Rajsamand Districts		Indraprastha Gas Limited	0	554	0	0
Bhiwadi (in Alwar District)		Haryana City Gas Distribution (Bhiwadi) Limited	0	226	0	39
Kota District (EAAA), Baran & Chittorgarh (Only Rawatbhata Taluka) Districts		Torrent Gas Private Limited	8	0	0	0
Bhilwara & Bundi Districts		Adani Gas Limited	4	0	0	0
Jalore and Sirohi Districts		Gujarat Gas Limited	4	0	0	0
Chittorgarh (Other than Rawatbhata Taluka) & Udaipur Districts*		Adani Gas Limited	3	0	0	0
Dholpur District		Dholpur CGD Private Limited	3	0	0	0
CNG (DBS) NOC	Rajasthan State Gas Limited	2	-	-	-	
Rajasthan Total			32	12,492	17	54
Hyderabad	Telangana	Bhagyanagar Gas Limited	62	89,221	17	38
Medak, Siddipet & Sangareddy Districts		Torrent Gas Private Limited	11	0	0	0
Telangana Total			73	89,221	17	38
Agartala	Tripura	Tripura Natural Gas Company Limited	5	41,903	442	60
West Tripura (EAAA) District		Tripura Natural Gas Company Limited	2	4,555	0	0
Gomati District		Tripura Natural Gas Company Limited	3	0	0	0
Tripura Total			10	46,458	442	60
Gautam Budh Nagar District	Uttar Pradesh	Indraprastha Gas Limited	49	236848	592	803
Ghaziabad & Hapur Districts		Indraprastha Gas Limited	51	220289	286	344
Kanpur		Central UP Gas Limited	30	64,371	193	63
Agra		Green Gas Limited	23	54,618	61	17
Lucknow		Green Gas Limited	34	50,144	57	11
Meerut		GAIL Gas Limited	17	44,131	41	57
Allahabad		Indian-Oil Adani Gas Private Limited	7	35,437	21	2
Bareilly		Central UP Gas Limited	13	26,881	118	18
Varanasi District		GAIL (India) Limited	10	20,608	24	0
Meerut District (EAAA), Muzaffarnagar & Shamli Districts		Indraprastha Gas Limited	8	10650	3	0
Moradabad		Torrent Gas Moradabad Limited	5	8,263	12	71
Saharanpur District		Bharat Petroleum Corporation Limited	5	6,672	0	0
Khurja		Adani Gas Limited	4	6,067	4	229
Mathura		Sanwariya Gas Limited	11	4,553	39	76
Kanpur (EAAA) District, Fatehpur and Hamirpur Districts		Indraprastha Gas Limited	4	1,002	0	0
Auraiya, Kanpur Dehat & Etawah Districts		Torrent Gas Private Limited	12	0	0	0
Moradabad (EAAA) District		Torrent Gas Private Limited	10	0	0	0

Geographical Area/CGD Networks	State/Union Territory	Authorized CGD Entity	CNG stations	PNG connections		
				Domestic	Commercial	Industrial
Jhansi		Central UP Gas Limited	4	0	0	0
Allahabad District (EAAA), Bhadohi & Kaushambi Districts		Indian-Oil Adani Gas Private Limited	4	0	0	0
Gonda and Barabanki Districts		Torrent Gas Private Limited	4	0	0	0
Bagpat District		Bagpat Green Energy Private Limited	3	0	0	0
Azamgarh, Mau and Ballia Districts		Torrent Gas Private Limited	3	0	0	0
Basti and Ambedkarnagar Districts		Torrent Gas Private Limited	2	0	0	0
Bulandshahr (part) District		Indian-Oil Adani Gas Private Limited	1	0	0	0
Bulandshahr District (EAAA), Aligarh & Hathras Districts		Indian-Oil Adani Gas Private Limited	1	0	0	0
Unnao (EAAA) District		Green Gas Limited	1	0	0	0
Bareilly (EAAA) District, Pilibhit and Rampur Districts		Hindustan Petroleum Corporation Limited	1	0	0	0
Jaunpur and Ghazipur Districts		Indian-Oil Adani Gas Private Limited	1	0	0	0
Shahjahanpur and Budaun Districts		Hindustan Petroleum Corporation Limited	1	0	0	0
Gorakhpur, Sant Kabir Nagar & Kushinagar Districts		Torrent Gas Private Limited	10	0	0	0
		Uttar Pradesh Total	329	790,534	1,451	1,691
Firozabad (Taj Trapezium Zone)	Uttar Pradesh & Rajasthan	GAIL Gas Limited	23	16,307	1	341
		Uttar Pradesh & Rajasthan Total	23	16,307	1	341
Bijnor and Nainital Districts	Uttar Pradesh and Uttrakhand	Hindustan Petroleum Corporation Limited	1	0	0	0
		Uttar Pradesh and Uttrakhand Total	1	0	0	0
Haridwar District		Haridwar Natrural Gas Private Limited	1	13,000	0	0
Udham Singh Nagar District	Uttrakhand	Indian-Oil Adani Gas Private Limited	3	9,401	26	28
Dehradun District		GAIL Gas Limited	2	3,580	0	0
		Uttrakhand Total	6	25,981	26	28
Burdwan District	West Bengal	Indian-Oil Adani Gas Private Limited	4	0	0	0
CNG stations at Asansol,Raniganj, Kultora, Durgapur		Great Eastern Energy Corporation Limited	7	0	0	0
		West Bengal Total	11	0	0	0
		Grand Total	2,434	6,814,177	31,788	10,436

Source: PNGRB, GEECL (The data of CNG stations and PNG domestic connections as for the month of July'20 & August'20 is being reconciled with PNGRB & other stakeholders)

24. Domestic natural gas price and gas price ceiling (GCV basis)

Period	Domestic Natural Gas price in US\$/MMBTU	Gas price ceiling in US\$/MMBTU
November 2014 - March 2015	5.05	-
April 2015 - September 2015	4.66	-
October 2015 - March 2016	3.82	-
April 2016 - September 2016	3.06	6.61
October 2016 - March 2017	2.5	5.3
April 2017 - September 2017	2.48	5.56
October 2017 - March 2018	2.89	6.3
April 2018 - September 2018	3.06	6.78
October 2018 - March 2019	3.36	7.67
April 2019 - September 2019	3.69	9.32
October 2019 - March 2020	3.23	8.43
April 2020 - September 2020	2.39	5.61
October 2020 - March 2021	1.79	4.06



PART-F

Taxes & Duties on Petroleum Products

25. Information on Prices, Taxes and Under-recoveries/Subsidies

International FOB prices/ Exchange rates (\$/bbl)				Price buildup of petroleum products (Rs./litre/Cylinder)		
Particulars	2018-19	2019-20	Oct 2020	Particulars	Petrol*	Diesel*
Crude oil (Indian Basket)	69.88	60.47	40.66	Price charged to dealers (excluding Excise Duty and VAT)	25.73	25.75
Petrol	75.58	66.94	44.82	Excise Duty	32.98	31.83
Diesel	82.51	71.78	42.29	Dealers' Commission (Average)	3.64	2.52
Kerosene	82.24	70.56	40.08	VAT (incl VAT on dealers' commission)	18.71	10.36
LPG (\$/MT)	526.00	453.75	378.00	Retail Selling Price	81.06	70.46
FO (\$/MT)	420.93	321.19	253.16			
Naphtha (\$/MT)	573.72	471.08	371.55			
Exchange (Rs./\$)	69.89	70.88	73.46			
Customs, excise duty & GST rates						
Product	Basic customs duty #	Excise duty	GST rates	Particulars	PDS SKO*	Subsidised Domestic LPG*
Petrol	2.50%	Rs 32.98/Ltr^	**	Price before taxes and dealers'/distributors' commission	20.94	503.86
Diesel	2.50%	Rs 31.83/Ltr^	**	Dealers'/distributors' commission	2.59	61.84
PDS SKO	Nil	Not Applicable	5.00%	GST (incl GST on dealers'/distributors' commission)	1.18	28.30
Non-PDS SKO	5.00%		18.00%	Retail Selling Price	24.71	594.00
Domestic LPG	Nil***		5.00%			
Non Domestic LPG	5.00%		18.00%			
Furnace Oil (Non-Fert)	5.00%		18.00%			
Naphtha (Non-Fert)	4.00%		18.00%			
ATF	5.00%		11% *	**		
Crude Oil	Rs.1/MT+ Rs.50/-MT as NCCD	Rs.1/MT+ Cess@20% + Rs.50 /-MT NCCD	**			

*2% for scheduled commuter airlines from regional connectivity scheme airports;

** GST Council shall recommend the date on which GST shall be levied on petroleum crude, HSD, MS, natural gas and ATF; # Social welfare surcharge @ 3% on petrol and diesel and 10% on other products is levied on aggregate duties of Customs excluding CVD in lieu of IGST; *** Customs duty is Nil for import of Domestic LPG sold to household consumers (including NDEC) by PSU OMCs. Customs duty rate is 5% for other importers of domestic LPG; ^Effective 06.05.2020.

*Petrol and diesel at Delhi as per IOCL are as on 1st November 2020. PDS SKO at Mumbai and Subsidised Domestic LPG at Delhi as on 1st November 2020.

25. Information on Prices, Taxes and Under-recoveries/Subsidies

Under-recoveries/subsidy & burden sharing

PDS Kerosene

Product	2018-19	2019-20	H1, 2020-21
	Rs./Crore		
Under recovery	5,950	1,833	0
Subsidy under DBTK #	117	36	0
Total	6,067	1,869	0

#DBTK subsidy excludes cash incentive/assistance for establishment of institutional mechanism for direct transfer of subsidy paid to States/UTs. DBTK subsidy for 2019-20 is till July 2019.

Domestic LPG under DBTL (Direct benefit transfer for LPG)

Particulars	2018-19	2019-20	H1, 2020-21
	Rs./Crore		
DBTL subsidy	31,447	22,635	1,126
PME & IEC^	92	91	-
Total	31,539	22,726	1,126

^ on payment basis (PME & IEC- Project Management Expenditure & Information Education and Communication)

Sales & profit of petroleum sector (Rs. Crores)

Particulars	2019-20		H1, 2020-21	
	Turnover	PAT	Turnover	PAT
Upstream/midstream Companies (PSU)	179,192	22,650	59,241	4,859
Downstream Companies (PSU)	11,74,731	6,633	4,26,918	17,753
Standalone Refineries (PSU)	123,424	-3,405	39,427	1,332
Private-RIL	3,65,202	30,903	116,694	15,840

Borrowings of OMCs (Rs. Crores), As on

Company	Mar`19	Mar`20	Sep`20
IOCL	86,359	116,545	91,505
BPCL	29,099	41,875	27,849
HPCL	27,240	43,021	31,963

Petroleum sector contribution to Central/State Govt.

Particulars	2018-19	2019-20	Q1, 2020-21
Central Government	3,48,041	3,34,315	49,914
% of total revenue receipts	22%	18%	
State Governments	2,27,591	2,21,056	32,007
% of total revenue receipts	8%	7%	
Total (Rs. Crores)	5,75,632	5,55,370	81,921

Subsidy as a percentage of GDP (at current prices)

Particulars	2018-19	2019-20
Petroleum subsidy	0.23	0.13

Note: GDP figure for 2018-19 is Revised Estimates and 2019-20 is Provisional Estimates



PART-G

Miscellaneous

26. Capital expenditure of PSU oil companies

(Rs in crores)

Company	2017-18	2018-19	2019-20	2020-21 (P)	
				Target	Apr-Oct
ONGC Ltd	72,383	28,738	30,115	32,502	13,085
ONGC Videsh Ltd (OVL)	6,240	6,013	5,363	7,235	3,388
Oil India Ltd (OIL)	8,395	3,702	3,724	3,877	1,826
GAIL (India) Ltd	3,613	5,958	4,381	5,412	2,015
Indian Oil Corp. Ltd. (IOCL)	20,345	26,548	28,316	26,233	10,492
Hindustan Petroleum Corp. Ltd (HPCL)	7,134	11,689	13,773	11,500	4,787
Bharat Petroleum Corp. Ltd (BPCL)	8,161	10,084	10,255	9,000	3,151
Mangalore Refinery & Petrochem Ltd (MRPL)	1,281	1,072	1,318	1,150	578
Chennai Petroleum Corp. Ltd (CPCL)	963	1,208	969	569	224
Numaligarh Refinery Ltd (NRL)	387	459	536	949	289
Balmer Lawrie Co. Ltd (BL)	78	125	40	35	16
Engineers India Ltd (EIL) #	-	87	164	60	26
Total	1,28,981	95,684	98,955	98,522	39,877

Includes expenditure on investment in JV/subsidiaries.

(P) Provisional;

Included from 2018-19.

27. Conversion factors and volume conversion

Weight to volume conversion				Volume conversion	
Product	Weight (MT)	Volume (KL)	Barrel (bbl)	From	To
LPG	1	1.844	11.60	1 US Barrel (bbl)	159 litres
Petrol (MS)	1	1.411	8.88	1 US Barrel (bbl)	42 US Gallons
Diesel (HSD)	1	1.210	7.61	1 US Gallon	3.78 litres
Kerosene (SKO)	1	1.285	8.08	1 Kilo litre (KL)	6.29 bbl
Aviation Turbine Fuel (ATF)	1	1.288	8.10	1 Million barrels per day	49.8 MMTPA
Light Diesel Oil (LDO)	1	1.172	7.37	Energy conversion	
Furnace Oil (FO)	1	1.0424	6.74	1 Kilocalorie (kcal)	4.187 kJ
Crude Oil	1	1.170	7.33	1 Kilocalorie (kcal)	3.968 Btu
Exclusive Economic Zone				1 Kilowatt-hour (kWh)	860 kcal
200 Nautical Miles	370.4 Kilometers			1 Kilowatt-hour (kWh)	3,412 Btu

Natural gas conversions				
1 Standard Cubic Metre (SCM)	35.31 Cubic Feet		1 MMBTU	25.2 SCM @10000 kcal/SCM
1 Billion Cubic Metres (BCM)/year of Gas	2.74 MMSCMD		GCV (Gross Calorific Value)	10,000 kcal/SCM
1 Trillion Cubic Feet (TCF) of Gas Reserve	3.88 MMSCMD		NCV (Net Calorific Value)	90% of GCV
1 Million Metric Tonne Per Annum (MMTPA) of LNG	3.60 MMSCMD		Gas required for 1 MW power generation	4,541 SCM/day
1 MT of LNG	1,325 SCM		Power generation from 1 MMSCMD of gas	220 MW

Petroleum Planning & Analysis Cell

(Ministry of Petroleum & Natural Gas, Government of India)

SCOPE Complex, 2nd Floor Core-8, Lodhi Road, New Delhi-110003

Tel.: 011-24306191/92, 011-24361314, Fax: 011-24361253 www.ppac.gov.in

