

Industry POL & NG Consumption Report

NOVEMBER 2021



Petroleum Planning & Analysis Cell
Ministry of Petroleum & Natural Gas, Government of India



Contents

Highlights	3
Consumption	4
All Products:	5
Petrol/Motor Spirit (MS):.....	5
Other Factors impacting consumption of MS:	6
High Speed Diesel (HSD):	7
Other Factors impacting consumption of HSD:.....	8
Kerosene:.....	11
Bitumen:	12
LPG:	12
Naphtha:	14
ATF:	14
Furnace oil & Low sulphur heavy stock (FO/LSHS):	15
Petcoke:	15
Light Diesel Oil:.....	16
Natural Gas:.....	16

Highlights

The month of November 2021 has seen a further decline in active COVID-19 cases aided by rapid vaccination coverage. Goods and Services Tax collection during the month stood at ₹ 1.31 lakh crore, crossing ₹ 1.3 lakh crore mark for second consecutive month indicating sustained economic growth. India's merchandise exports during the month of November 2021 stood at a value of USD 30.04 billion with a growth of 27.16% over USD 23.62 billion in November 2020.

The summary of product-wise POL consumption pattern during the month of November 2021 is as follows.

1. The consumption of petroleum products in November 2021 with a volume of 17.1 MMT recovered to 88.6% over a volume of 19.3 MMT in November 2020.
2. MS (Petrol) consumption during the month of November 2021 with a volume of 2.65 MMT (0.78 million barrels per day, mbpd) almost recovered to the volume of 2.67 MMT (0.79 mbpd) in November 2020. The consumption of MS has been subdued during the month owing to extreme rainfall in several states ranging from large excess to large deficient. The Sale of Passenger Vehicles in November 2021 stood at 2.2 lacs against a sale of 2.6 lacs in the same month previous year. Two-wheeler sales during the month was 10.5 lacs against a sale of 16.0 lacs in the same month previous year. Further 1,210 Electric 2 Wheelers were sold in November 2021 as compared to a sale of 363 electric 2Ws in November 2020.
3. HSD (Diesel) consumption during the month of November 2021 with a volume of 6.5 MMT (1.65 mbpd) recovered to 92.4% of the volume of 7.0 MMT (1.79 mbpd) in the month of November 2020. Extreme rainfall ranging from large excess to large deficient affected agriculture, mining, and other economic activities. The power demand in November 2021 increased by 1.7% as compared to November 2020 and power deficit remained constant at -0.2% as in the month of November 2020. Rainfall during the month was 86% above the normal. Traffic at major ports during the month of November 2021 has almost stayed stagnant as compared to November 2020.
4. LPG consumption during the month of November 2021 with a volume of 2.34 MMT almost recovered the volume of 2.35 MMT in the month of November 2020. LPG consumption during the month was led by growth in domestic category while non-domestic category saw a dip in consumption.
5. ATF consumption during November 2021 with a volume of 0.5 MMT registered a growth of 34.0% over a volume of 0.4 MMT during the month of November 2020. Consumption has shown a steady growth month over month for last five months indicating momentum towards normalisation. International air travel continued to remain regulated during the month.
6. Bitumen consumption during November 2021 with a volume of 0.6 MMT recovered to 78.5% over volume of 0.7 MMT in the month of November. Heavy rainfall and floods have affected ongoing road construction projects.
7. Kerosene (SKO) consumption registered a de-growth of -20.2% in November 2021 as compared to November 2020. Ten States/UTs have gone kerosene free while the states of Uttarakhand and Goa registered nil sales of PDS SKO during the month.

8. Consumption of Natural Gas with a volume of 5.7 BCM during the month of November 2021 recovered to 97.6% on volume of 5.8 BCM in the month of November 2020.

This report analyses the trend of consumption of petroleum products in the country during the month of November 2021. Data on product-wise monthly consumption of petroleum products for November 2021 is uploaded on the PPAC website (www.ppac.gov.in) and on the mobile app “PPACE (PPAC-Easy)”. A small summary of Natural Gas consumption is also provided. Detailed NG production and consumption reports are available at www.ppac.gov.in.

Consumption

The growth (%) in consumption of petroleum products, category-wise, for the month of November 2021 is given in Table-1.

Table-1: Petroleum Products Consumption (Quantity in TMT)

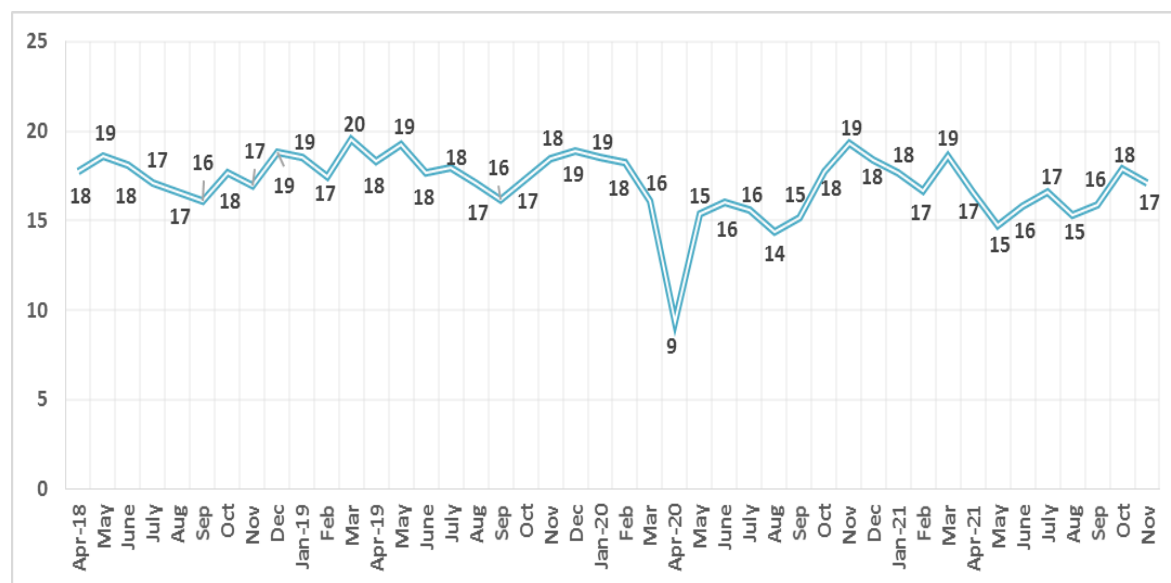
Product	% Share	November		
		2020-21	2021-22	Growth (%)
(A) Sensitive Products				
LPG	13.7	2352	2343	-0.4
SKO	0.7	155	123	-20.2
Sub Total	14.4	2506	2467	-1.6
(B) Major Decontrolled Product				
HSD	38.0	7039	6507	-7.6
MS	15.4	2665	2646	-0.7
Naphtha	6.6	1403	1131	-19.4
ATF	2.9	376	504	34.0
Bitumen	3.3	717	563	-21.5
FO/LSHS	2.9	483	502	3.9
Lubes+Greases	2.2	421	382	-9.2
LDO	0.4	69	65	-5.2
Sub Total	71.8	13174	12300	-6.6
(C) Other Minor Decontrolled Products				
Pet.Coke	5.9	1145	1004	-12.4
Others*	7.9	2516	1361	-45.9
Sub Total	13.8	3662	2365	-35.4
Total	100	19342	17131	-11.4

All Products:

Overall consumption of all petroleum products in November 2021 with a volume of 17.1 MMT recovered to 88.6% over the volume of 19.3 MMT in November 2020. The products which registered a growth in the month of November 2021 were Aviation Turbine Fuel (ATF) 34.0% and Furnace Oil & Low Sulphur Heavy Stock (FO/LSHS) 3.9% while the products which registered de-growth during the month were LPG -0.4%, Diesel (HSD) -7.6%, Petrol (MS) -0.7%, Naphtha -19.4%, Bitumen -21.5%, Lubes & Greases -9.2%, Light Diesel Oil (LDO) -5.2%, Pet coke -12.4% and products categorised under "Others" category -45.9%. Kerosene (SKO) recorded a de-growth of -20.2% during the current month as compared to November 2020.

Figure-1 gives monthly POL consumption (MMT) since April 2018.

Figure-1: Monthly POL consumption (MMT) since April 2018



PPAC analyses the sales recorded by the industry and domestic sales by SEZ units based on available data. Data on direct private imports is received from DGCIS, which is added to the final sales reported by oil companies and domestic sales by SEZ units, for estimation of consumption figures, are available up to September 2021. Private imports data for October 2021 and November 2021 are projected based on October 2020 to September 2021 actual data.

Petrol/Motor Spirit (MS):

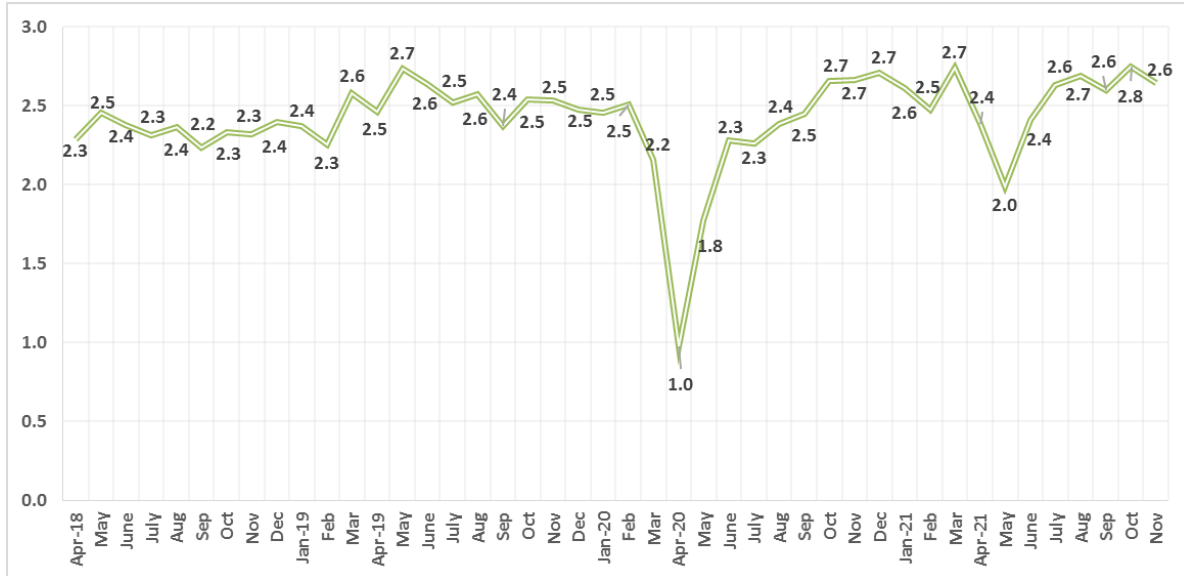
MS (Petrol) consumption during the month of November 2021 with a volume of 2.65 MMT almost recovered to the volume of 2.67 MMT in November 2020. Major factors contributing to MS consumption during the month are as follows:

- Rural markets reeled under pressure of extreme weather conditions of deficient and excess rainfall.
- Floods and incessant rainfall in several states disrupted the usual economic activities.
- Public transport is gaining traction as new cases of COVID-19 further decreased and people are moving towards normal way of life.

- Urban markets have led consumption as the festive season bought cheers to consumers.
- Tourism is gradually moving towards normalisation as more people opt for holidays during the festive season.

Figure-2 gives month-wise MS consumption volume (MMT) since April 2018.

Figure-2: Month wise MS consumption volume (MMT) since April 2020



Other Factors impacting consumption of MS:

Passenger Vehicle Sales:

The Sale of Passenger Vehicles in November 2021 at 2.2 lacs recovered to 95.3% MoM over sale of 2.3 lacs in the month of October 2021. Incessant rainfalls and floods dampened consumer demand during the month.

Passenger cars and vans recorded a de-growth of -32.7% and -15.7% respectively while utility vehicles registered a growth of 1.5% during the current month as compared to the same period previous year.

Table-2: Passenger vehicle sales in the month of November 2021

Vehicle Segment	November		
	2020-21	2021-22	Growth %age
Passenger Cars	1,49,949	1,00,906	-32.7
Utility Vehicles	1,03,525	1,05,091	1.5
Vans	11,424	9,629	-15.7
Total PV	2,64,898	2,15,626	-18.6

Source: SIAM

Two-Wheeler Sales:

Two-wheeler sales with a volume of 10.5 lacs during November 2021 recovered to 68.2% MoM over sale of 15.4 lacs in the month of October 2021

Scooters/Scooterette, Motorcycle and Moped sales registered a de-growth of -38.9%, -31.8% and -39.8% respectively during the current month as compared to the same period previous year. Electric two wheelers registered a sale of 1,210 vehicles during the month as compared to 363 vehicles sold in the month of November 2020.

Table-3: Two Wheelers vehicle sales in the month of November 2021

Vehicle Segment	November		
	2020-21	2021-22	Growth %age
Scooters/Scooterette	5,02,561	3,06,899	-38.9
Motorcycles	10,26,705	6,99,949	-31.8
Mopeds	70,750	42,558	-39.8
Electric Two Wheelers	363	1,210	233.3
Total 2 Wheelers	16,00,379	10,50,616	-34.4

Source: SIAM

High Speed Diesel (HSD):

HSD (Diesel) consumption during the month of November 2021 with a volume of 6.5 MMT recovered to 92.4% over volume of 7.0 MMT in the month of November 2020.

Factors affecting diesel consumption during the November 2021 are as follows:

- Incessant rainfall and floods in several southern and eastern states of the country has severely hampered normal economic activities.
- Largely deficient rainfalls in northern states of the country have affected rural markets.
- The consumption during the month has largely driven by urban markets while the rural markets lagged.
- Rail transports continues to take away share of road transport.
- IHS Markit Manufacturing Purchasing Manager's Index (PMI) increased to 57.6 in November 2021 against 55.9 in October 2021 indicating a robust consumer demand.
- Sectoral analysis of direct consumer segment indicated that consumption of diesel during November 2021 came down in manufacturing activities by -13.9% of its level in the month of November 2020.
- Increase in consumption of biodiesel in industries as well as road transport continues to affect diesel consumption.

Figure-3 gives month-wise HSD consumption volume (MMT) since April 2018.

Figure-3: Month-wise HSD consumption (MMT) since April 2018

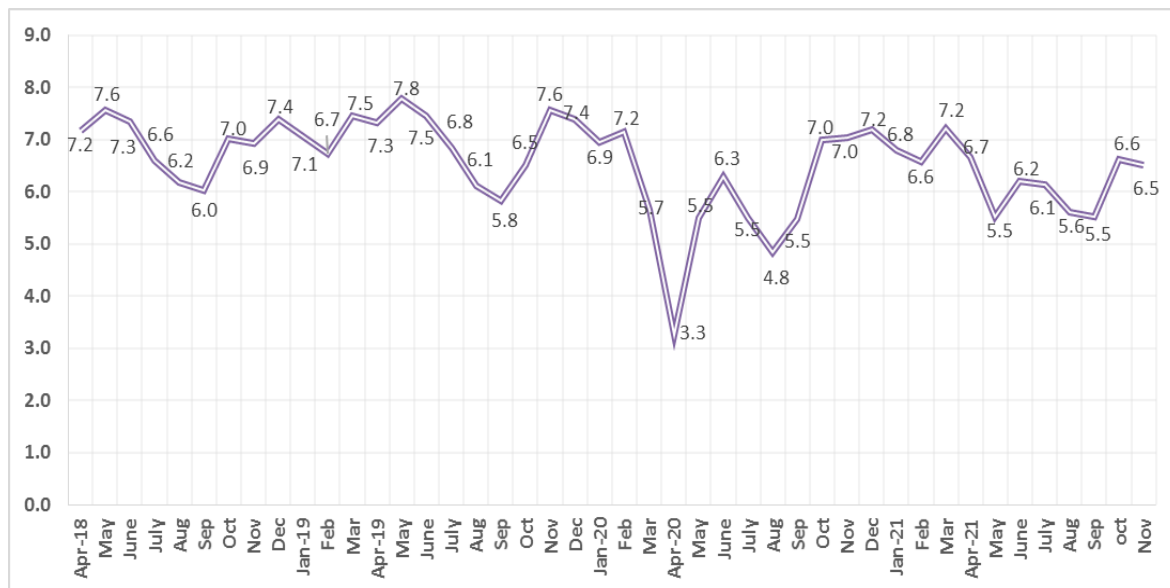
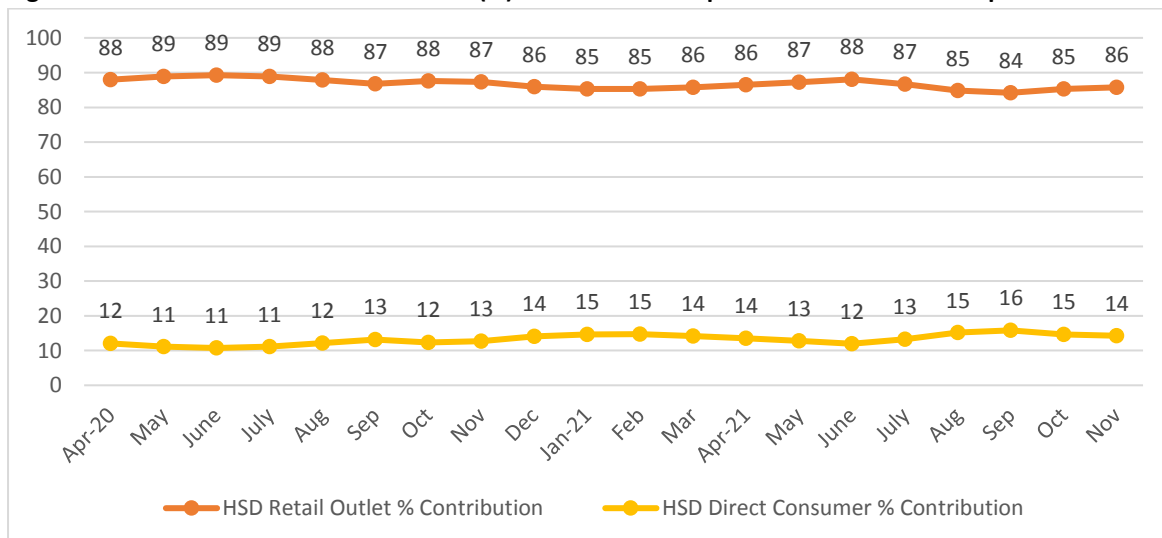


Figure-4 gives a comparison of month-wise percentage of HSD consumption through retail outlets and direct consumer business since April 2020.

Figure-4: Share of Retail & Direct business (%) in Diesel consumption month-wise since April 2020



Other Factors impacting consumption of HSD:

Commercial Vehicle

Based on data reported by individual companies, on an average there has been a growth of around 3% in domestic sales of commercial vehicles during the month of November 2021 as compared to November 2020. The growth in commercial vehicle indicates towards expansion in manufacturing sector as suggested by the IHS Markit Manufacturing Purchasing Manager’s Index (PMI) for the month.

Tractor Sale:

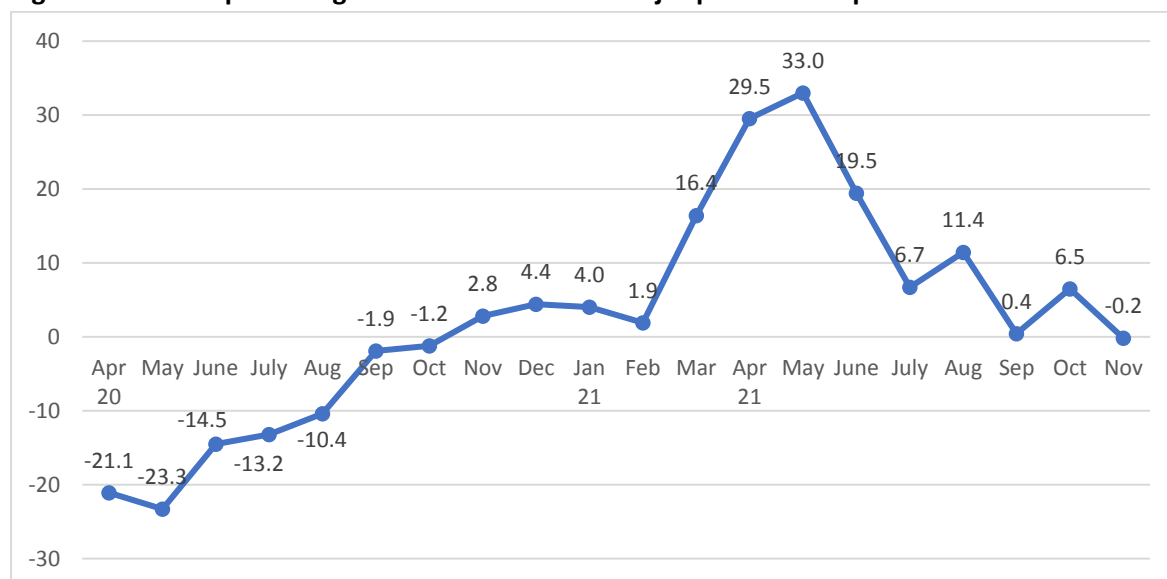
Tractor sales as reported by major individual companies in the month of November 2021 has seen a contraction of about -20% as compared to sales in November 2020. Incessant rainfall has suppressed demand in the rural sector during the month.

Port Traffic:

The traffic handled at major ports in India with a volume of 59.4 MMT in November 2021 almost recovered to the volume of 59.5 MMT in the month of November 2020. November 2021 has seen the first muted traffic after having experienced a continuous growth for last twelve consecutive months.

Figure-5 gives a trend in % growth of traffic handled at major ports since April 2020.

Figure-5: Growth percentage of traffic handled at major ports since April 2020.



Growth was observed in cargo handled during the month of November 2021 in the port of Kamarajar (Ennore) 38.9%, Chennai 12.5%, VO Chidambaranar (Tuticorin) 29.6%, Cochin 0.5%, New Mangalore 4.4%, Mumbai 17.9%, JNPT 13.1% and Deendayal (Kandla) 2.4%.

During the period April - November 2021, growth was registered in Petroleum Oil & lubricants (POL) 10.4%, other liquids 11.5%, fertilizer raw 15.3%, thermal & steam coal 32.9%, coking & others coal 6.1%, containers 26.5% and miscellaneous cargo 18.5%. Commodity-wise, the percentage share of POL was maximum i.e. 30.5%, followed by container 23.4%, thermal & steam coal 13.7%, other miscellaneous cargo 11.4%, iron ore & pellets 7.3%, coking & other coal 7.2%, other liquids 4.3%, raw fertilizer 1.2% and finished fertilizer 1.0%.

Table-4: Traffic handled at major ports in November 2021

(Qty in TMT)

Ports	November 2020	November 2021	Growth (%)
Kolkata & Haldia	5,996	5,146	-14.2
Paradip	10,277	8,614	-16.2
Visakhapatnam	6,427	5,732	-10.8
Kamarajar (Ennore)	1,936	2,690	38.9
Chennai	3,416	3,842	12.5
V.O. Chidambaranar	2,235	2,897	29.6
Cochin	3,073	3,088	0.5
New Mangalore	2,856	2,981	4.4
Mormugao	2,039	1,322	-35.2
Mumbai	4,648	5,480	17.9
JNPT	5,698	6,443	13.1
Deendayal	10,934	11,197	2.4
Total:	59,535	59,432	-0.2

Source: ipa.nic.in

Power situation:

The position of power supply for the month of November 2021 is given in Table-5. As per the data reported, power deficit position had remained constant at -0.2% as in the month of November 2020. The deficit was mainly in the state of Gujarat and UT of J&K and Ladakh. The requirement of power in November 2021 at 99,604 MU has recorded a growth of 1.7% over requirement of power at 97,912 MU in the month of November 2020.

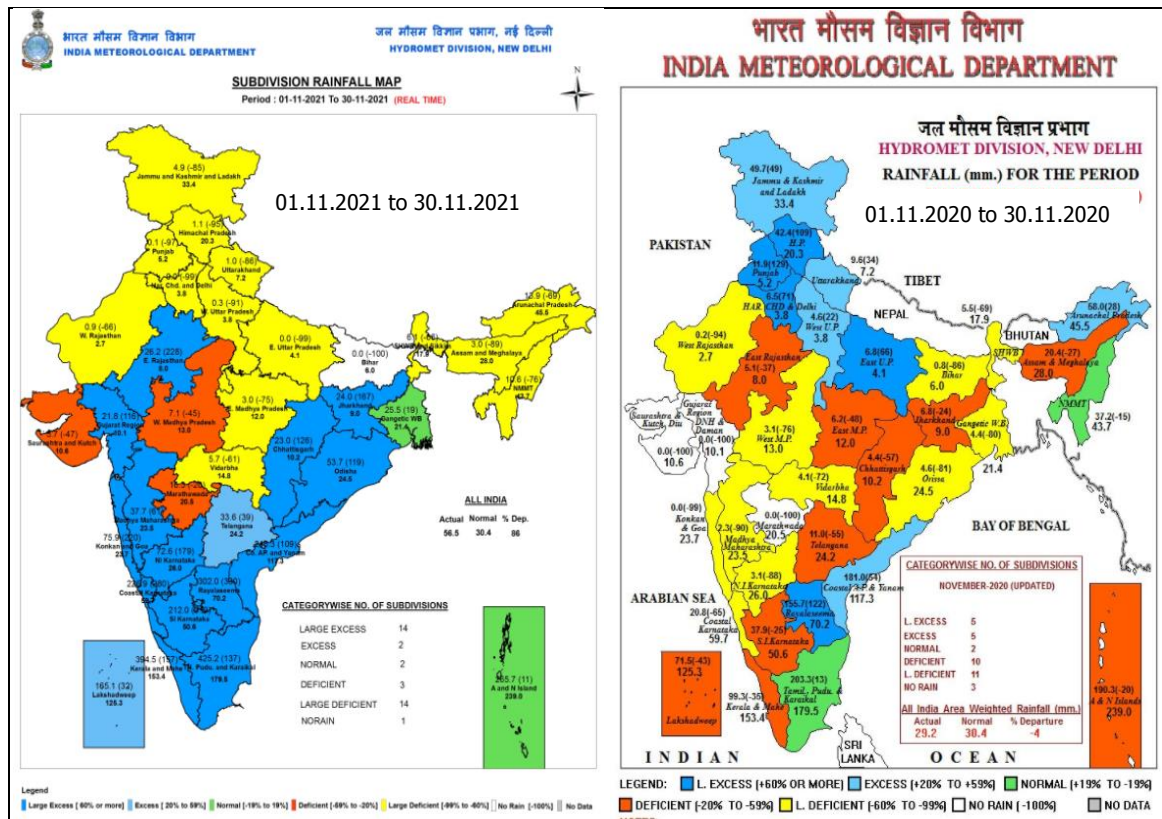
Table-5: Power supplied and deficit for November 2021

Region	November 2021		
	Requirement	Supplied (MU)	Deficit %
North	27,743	27,613	-0.5%
West	35,946	35,880	-0.2%
South	23,445	23,441	0.0%
East	11,194	11,164	-0.3%
North-East	1,276	1,273	-0.2%
Total	99,604	99,370	-0.2%

Source: Central Electricity Authority (CEA)

Seasonal rainfall scenario:

The rainfall in the country during November 2021 was 86% above normal precipitation. A rainfall of 56.5 mm was recorded in the month of November 2021 as against a normal reading of 30.4 mm. Out of total 36 subdivisions, 16 divisions received from excess to large excess rainfall, 18 divisions received deficient to no rainfall whereas only 2 divisions received normal rainfall.

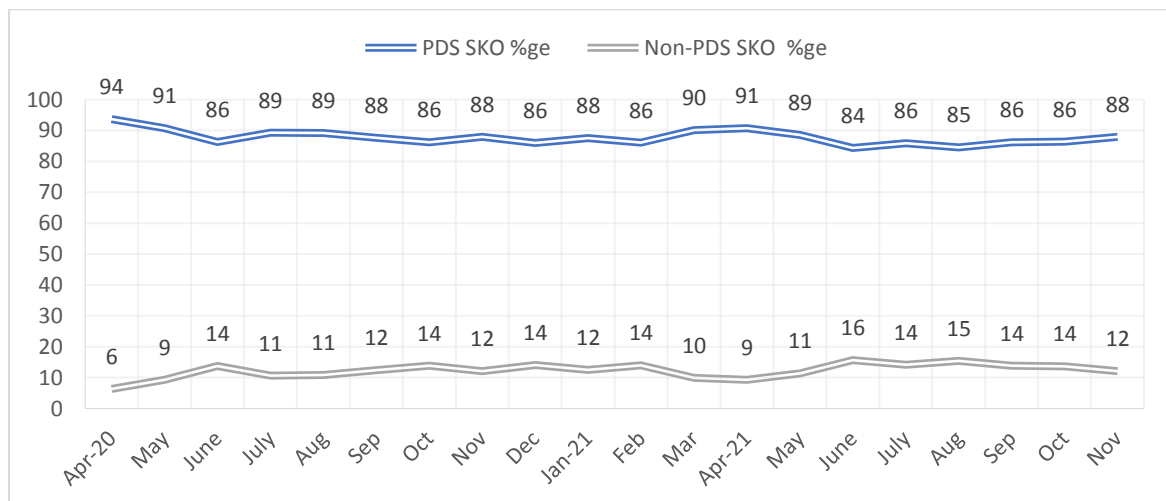


Kerosene:

Kerosene consumption registered a de-growth of -20.2% during the month of November 2021 as compared to November 2020. There are ten number of states/UTs who have voluntarily surrendered the PDS kerosene quota. All UTs except the UT of J&K, Ladakh and Lakshadweep and the states of Andhra Pradesh, Delhi, Haryana, Punjab, Uttar Pradesh and Rajasthan have been declared kerosene free. The states of Goa and Uttarakhand registered nil sales of PDS SKO during the month.

Figure-6 gives a comparison of SKO sales in PDS and Non-PDS since April 2020.

Figure-6: Month-wise PDS & Non PDS SKO consumption in share (%) since April 2020

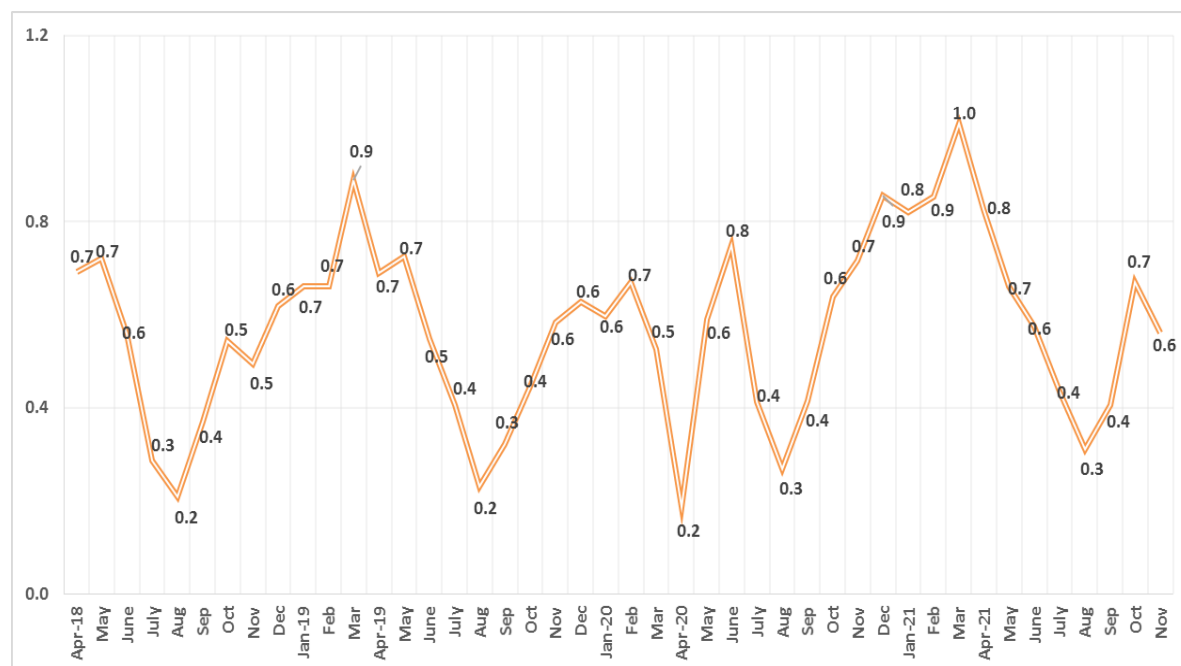


Bitumen:

Bitumen consumption during November 2021 with a volume of 0.6 MMT recovered to 78.5% of volume of 0.7 MMT in the month of November 2020. Road construction work has been affected by incessant rainfall and floods in several parts of the country.

Figure-7 gives the month wise bitumen consumption since April 2018.

Figure-7: Month-wise Bitumen consumption (MT) since April 2018



LPG:

Total LPG consumption during the month with a volume of 2.3 MMT recovered to 99.6% of volume of 2.4 MMT in the month of November 2020. LPG consumption recorded a cumulative growth of 2.1% during the period April – November 2021 compared to the same period last year. LPG consumption during the month was led by growth in domestic category while non-domestic category saw a dip in consumption.

Last year during November 2020, a growth of 4% was observed and the cumulative growth during April-November 2020 was 5.2%. During November 2021, out of the five regions, Northern region had the highest share in total PSU LPG sales of 31.8% followed by Southern region at 29%, Western region at 21.1%, Eastern region at 15.5% and North Eastern region at 2.7%.

Domestic LPG is supplied in 14.2 kg and 5 kg cylinders to domestic consumers for use as kitchen fuel. Packed Non-Domestic is sold to commercial or industrial consumers in cylinders having water capacity less than 1000 liter. Bulk LPG is primarily sold to Industries in large containers with water capacity greater than 1000 liter for industrial applications. Auto LPG is an automotive fuel used by three and four-wheeler vehicles

PSU LPG Packed Domestic category recorded a growth of 0.3% during November 2021 and a cumulative de-growth of -0.4% during April-November 2021. Last year during November 2020, a growth of 6% was observed and the cumulative growth during April-November 2020 was 11.4%.

During April-November 2021, around 119.8 lakh new connections and 36.1 lakh DBCs were released. A total of 8.8 crore BPL households have been covered under PMUY 1.0 & 2.0 till 30.11.2021 since inception of the scheme. During November 2021, the region-wise share of LPG Packed Domestic consumption was highest in Northern region (33.1%) followed by Southern region (27.3%), Western region (20.3%), Eastern region (16.4%) and North-Eastern region (2.9%). During November 2021, the six states with the highest LPG-Packed domestic sales share were Uttar Pradesh (14.1%), Maharashtra (10.7%), Tamil Nadu (8.3%) West Bengal (7%), Karnataka (6.3%) and Bihar (5.8%). During November 2021, percentage share of LPG-Packed Domestic is 89.7% of total PSU LPG sales whereas it was 89.1% in November 2020.

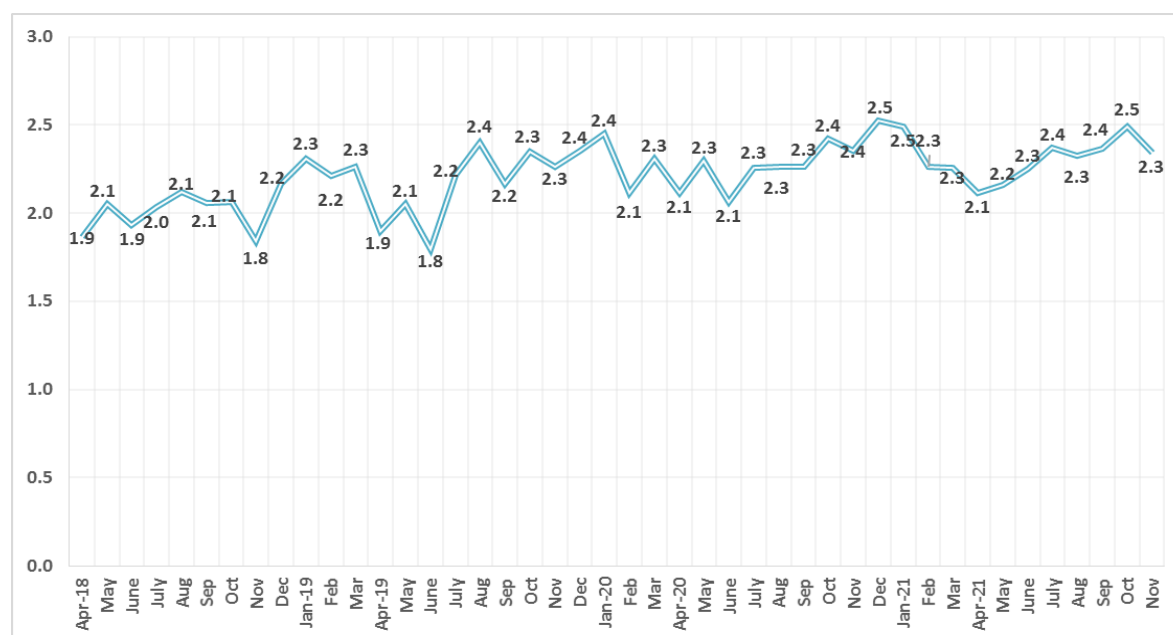
PSU LPG Packed Non-Domestic category recorded a growth of -3.4% in November 2021 and a cumulative growth of 37.9% during April-November 2021. Last year during November 2020, a de-growth of -14.7% was observed and the cumulative de-growth during April-November 2020 was -39.5%. Share of LPG Packed Non-Domestic in total PSU LPG Sales is 8.3% in November 2021 compared to 8.6% in November 2020. Region-wise share of LPG Packed Non-Domestic consumption was highest in Southern region (41.5%) followed by Western region (29%), Northern region (21.8%), Eastern region (6.6%) and North-Eastern region (1.1%) during November 2021.

PSU Bulk LPG category has registered a growth of -16.5% during November 2021 and a cumulative growth of 15.9% during April-November 2021. Last year in the month of November 2020, there was a growth of 57.8% while for the period April-November 2020, a growth of 13.4% was witnessed. Percentage share of Bulk LPG in total PSU LPG sales is 1.2% during November 2021 whereas it was 1.4% in November 2020.

PSU Auto LPG category registered a growth of -9.5% in November 2021 and a cumulative growth of 18.1% during April-November 2021. The sales volume change was about -1.1 TMT in November 2021 as compared to November 2020. Last year in the month of November 2020 a de-growth of -21.4% was observed while there was a cumulative de-growth of -42.4% during April-November 2020. During November 2021, the percentage share of Auto LPG is 0.5% of total PSU LPG sales whereas it was 0.5% in November 2020.

Figure-8 gives the month-wise LPG consumption since April 2018.

Figure-8: Month-wise LPG consumption (MMT) since April 2018



Naphtha:

Naphtha consumption during the month of November 2021 with a volume of 1.1 MMT recovered to 80.6% on volume of 1.4 MMT in the month of November 2020.

Petrochemical industries remain the main consumers of naphtha. Naphtha is a feedstock for fertilizer and petrochemical industry and is also used as a fuel for electricity generation. Out of the total naphtha consumption of 1131 TMT during the month, petrochemical sector consumed 959 TMT with a de-growth of 51 TMT and miscellaneous sector consumed 170 TMT with a de-growth of -207 TMT.

ATF:

ATF consumption during November 2021 registered a growth of 34.0% over the volume of November 2020. Consumption has shown a steady growth month over month for last five months indicating momentum towards normalisation. International air travel continued to remain regulated during the month.

Passengers carried by domestic airlines during the month of November 2021 stood at 105.2 lakhs as against 63.5 lakhs during November 2020. There has been a steady increase in passenger traffic month over month since last six months.

Figure-9 gives the month-wise passengers carried by domestic airlines in millions since April 2020.

Figure-9: Month-wise passengers carried by domestic airlines in millions since April 2018.

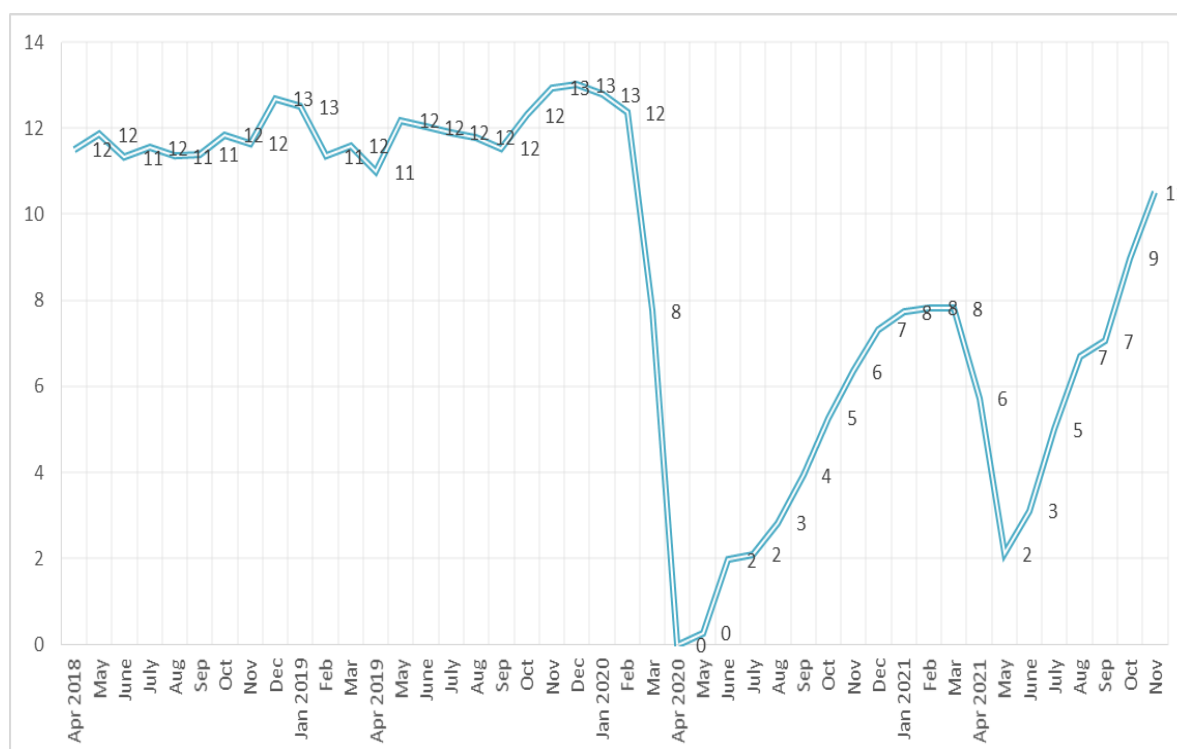
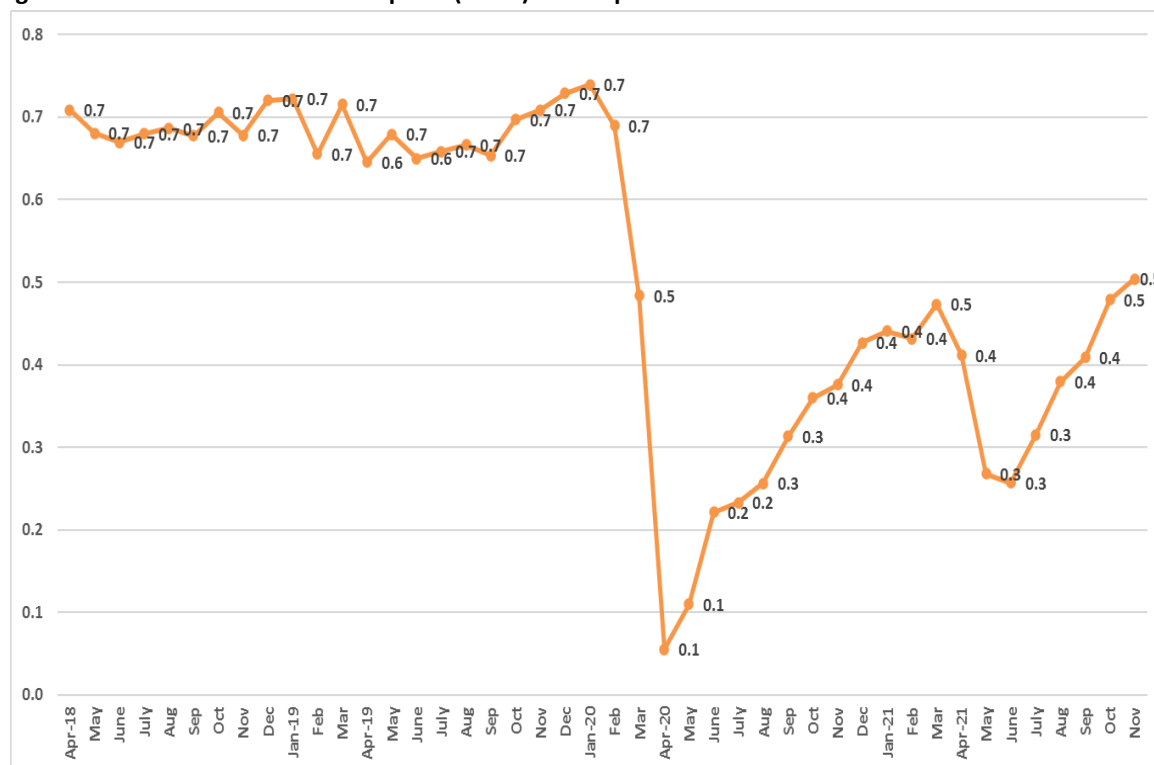


Figure-10 gives the month-wise ATF consumption since April 2018.

Figure-10: Month-wise ATF consumption (MMT) since April 2018



Furnace oil & Low sulphur heavy stock (FO/LSHS):

FO/LSHS consumption during November 2021 with a volume of 0.50 MMT recorded a growth of 3.9% over volume of 0.48 MMT consumed in the month of November 2020.

Consumption of FO/LSHS is largely driven by manufacturing and other miscellaneous sector in addition to shipping, power, road transport, agriculture, mining and others. Major growth in consumption during the month was recorded in manufacturing, power and road transport sector. Manufacturing consumed 195 TMT, miscellaneous 149 TMT, shipping 73 TMT and power generation 35 TMT out of the total consumption of 502 TMT of FO/LSHS in the month of November 2021.

Petcoke:

Petcoke consumption during the month of November 2021 with a volume of 1.0 MMT recovered to 87.6% on volume of 1.1 MMT in the month of November 2020. Petcoke consumption has seen a growth in manufacturing sector by 65 TMT while de-growth has been observed in miscellaneous sector by -180 TMT, Resellers -17 TMT and Mining -16 TMT during the month.

Directorate General of Foreign Trade (DGFT) under Ministry of Commerce and Industry has banned import of petcoke for use as fuel but has allowed its import only for use as feedstock in some select industries such as cement, lime kiln, calcium carbide and gasification industries. Manufacturing sector consumed 387 TMT and miscellaneous industrial uses consumed 475 TMT out of total 1004 TMT of petcoke consumed in the month of November 2021.

Light Diesel Oil:

LDO consumption during the month with a volume of 0.065 MMT recovered to 94.8% on volume of 0.069 MMT in the month of November 2020. LDO is extensively used in various types of furnaces. Consumption in power generation and manufacturing of 19 TMT and 21 TMT respectively were the major sectors contributing to the total consumption of 65 TMT LDO during the month.

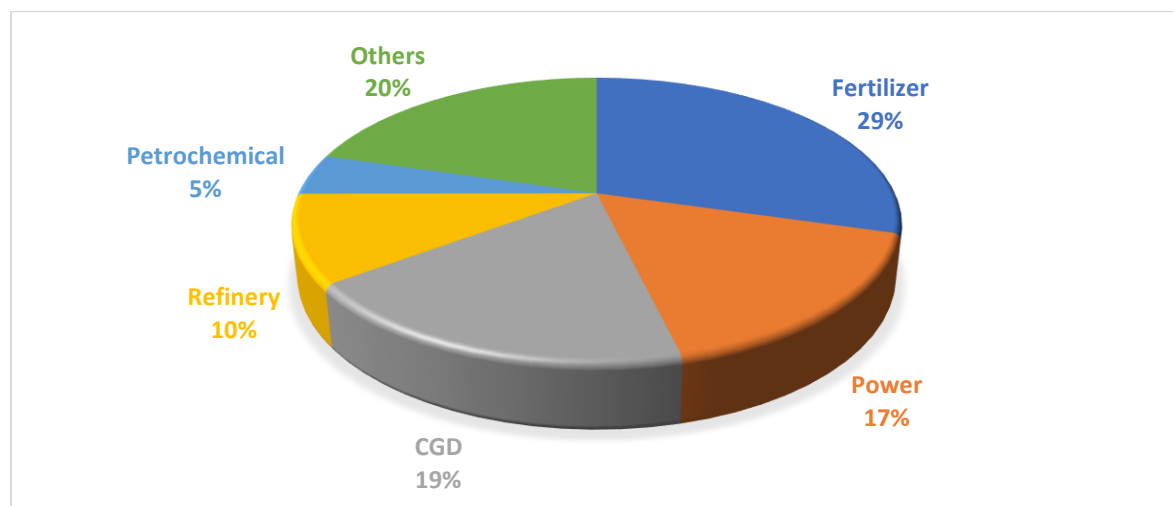
Natural Gas:

Natural Gas is used as a feedstock in several industries like fertilizers, plastics and other commercially important organic chemicals and used as a fuel for electricity generation, heating purpose in industrial and commercial units. Natural gas is also used for cooking in domestic households and as a transportation fuel for vehicles. Consumption of Natural Gas with a volume of 5.0 BCM (billion cubic metres) during the month of November 2021 recovered to 99.0% on volume of 5.1 BCM in the month of November 2020.

Approximate sector wise consumption of Natural gas for the period of April – October 2021 was fertilizer (29%), power (17%), City Gas Distribution (CGD) (19%), refinery (10%), petrochemicals (5%) and others (20%).

Figure-12 gives the sector wise consumption of Natural Gas for April – October 2021.

Figure-12: Sector wise consumption of Natural Gas for April – October 2021



Industry Consumption Trend Analysis 2021-22 (Provisional)							
('000 MT)							
Product	April - March	November			April - November		
	2020-21	2020-21	2021-22	Growth (%)	2020-21	2021-22	Growth (%)
(A) Sensitive Products							
LPG	27558	2352	2343	-0.4	18027	18413	2.1
SKO	1798	155	123	-20.2	1225	1017	-17.0
Sub Total	29356	2506	2467	-1.6	19252	19430	0.9
(B) Major Decontrolled Product							
HSD	72713	7039	6507	-7.6	44921	48793	8.6
MS	27969	2665	2646	-0.7	17439	20103	15.3
Naphtha	14100	1403	1131	-19.4	9183	9395	2.3
ATF	3698	376	504	34.0	1925	3023	57.0
Bitumen	7524	717	563	-21.5	3983	4452	11.8
FO/LSHS	5586	483	502	3.9	3559	3997	12.3
Lubes+Greases	4097	421	382	-9.2	2480	2842	14.6
LDO	855	69	65	-5.2	489	668	36.8
Sub Total	136543	13174	12300	-6.6	83979	93273	11.1
Sub - Total (A) + (B)	165899	15680	14767	-5.8	103230	112703	9.2
(C) Other Minor Decontrolled Products							
Pet.Coke	15605	1145	1004	-12.4	11280	8753	-22.4
Others*	12791	2516	1361	-45.9	8484	8525	0.5
Sub Total	28396	3662	2365	-35.4	19765	17278	-12.6
Total	194295	19342	17131	-11.4	122995	129981	5.7

*Others include sulphur, propylene, propane, reformat, butane, MTO (Mineral Turpentine oil) etc

Industry Consumption Trend Analysis 2021-22 (Provisional)							
Million Barrels per day							
Product	April - March	November			April - November		
	2020-21	2020-21	2021-22	Growth (%)	2020-21	2021-22	Growth (%)
(A) Sensitive Products							
LPG	0.88	0.91	0.91	-0.4	0.86	0.88	2.1
SKO	0.04	0.04	0.03	-20.2	0.04	0.03	-17.0
Sub Total	0.92	0.95	0.94	-1.2	0.90	0.91	1.3
(B) Major Decontrolled Product							
HSD	1.52	1.79	1.65	-7.6	1.40	1.52	8.6
MS	0.68	0.79	0.78	-0.7	0.63	0.73	15.3
Naphtha	0.34	0.41	0.33	-19.4	0.33	0.34	2.3
ATF	0.08	0.10	0.14	34.0	0.06	0.10	57.0
Bitumen	0.12	0.14	0.11	-21.5	0.10	0.11	11.8
FO/LSHS	0.10	0.11	0.11	3.9	0.10	0.11	12.3
Lubes+Greases	0.08	0.10	0.09	-9.2	0.07	0.08	14.6
LDO	0.02	0.02	0.02	-5.2	0.01	0.02	36.8
Sub Total	2.94	3.46	3.23	-6.4	2.71	3.01	11.1
Sub - Total (A) + (B)							
	3.86	4.41	4.17	-5.3	3.61	3.92	8.7
(C) Other Minor Decontrolled Products							
Pet.Coke	0.24	0.21	0.18	-12.4	0.26	0.20	-22.4
Others*	0.28	0.68	0.37	-45.9	0.28	0.28	0.5
Sub Total	0.52	0.89	0.55	-37.9	0.54	0.48	-10.4
Total	4.38	5.29	4.72	-10.8	4.15	4.40	6.2

*Others include sulphur, propylene, propane, reformat, butane, MTO (Mineral Turpentine oil) etc

Conversion factors taken for TMT to barrel conversion

Conversion factor (approx)		
Product	Weight (MT)	Bbl
LPG	1	11.6
SKO	1	8.1
Diesel	1	7.6
Petrol	1	8.9
Naphtha	1	8.7
ATF	1	8.1
Bitumen	1	6.1
Furnace Oil	1	6.7
Lubes	1	7.2
Light Diesel Oil	1	7.4
Petcoke	1	5.5
Product Basket (for Others)	1	8.1