



Petroleum Planning & Analysis Cell
Ministry of Petroleum & Natural Gas, Government of India

December 2021

Industry POL & NG Consumption Report





Contents

Highlights	3
Consumption	4
All Products:.....	5
Petrol/Motor Spirit (MS):	5
Other Factors impacting consumption of MS:	6
High Speed Diesel (HSD):	7
Other Factors impacting consumption of HSD:.....	8
Kerosene:.....	11
Bitumen:.....	12
LPG:	12
Naphtha:.....	14
ATF:	14
Furnace oil & Low sulphur heavy stock (FO/LSHS):	15
Petcoke:.....	15
Light Diesel Oil:	15
Natural Gas:	16

Highlights

The month of December 2021 saw a relatively low number of new COVID-19 infections but the last few days of month saw a gradual increase in the new infections. Goods and Services Tax collection during the month stood at ₹ 1.30 lakh crore, indicating a sustained economic growth. India's merchandise exports during the month of December 2021 stood at a value of USD 37.81 billion with a growth of 38.91% over USD 27.22 billion in December 2020.

The summary of product-wise POL consumption pattern during the month of December 2021 is as follows.

1. The consumption of petroleum products in December 2021 with a volume of 18.43 MMT registered a marginal increment of 0.4% over volume of 18.36 MMT in December 2020.
2. MS (Petrol) consumption during the month of December 2021 with a volume of 2.8 MMT (0.81 million barrels per day, mbpd) registered a growth of 4.1% over the volume of 2.7 MMT (0.78 mbpd) in December 2020. The consumption of MS during the month has been supported by yearend holiday season and a recovering economy. The Sale of Passenger Vehicles in December 2021 stood at 2.2 lacs against a sale of 2.5 lacs in the same month previous year. Two-wheeler sales during the month was 10.1 lacs against a sale of 11.3 lacs in the same month previous year.
3. HSD (Diesel) consumption during the month of December 2021 with a volume of 7.3 MMT (1.79 mbpd) registered a growth of 1.6% over the volume of 7.2 MMT (1.77 mbpd) in the month of December 2020. Economic activities continued to steadily expand during the month as both industries and offices continued to operate smoothly. Though heavy rainfall in few eastern states and cold waves in few northern states reined in the growth during the month. The power demand in December 2021 increased by 2.9% as compared to December 2020 and power deficit remained constant at -0.4% as in the month of December 2020. Rainfall during the month was 17% above the normal. Traffic at major ports during the month of December 2021 has almost reached the volume as in the month of December 2020.
4. LPG consumption during the month of December 2021 with a volume of 2.48 MMT recovered to 98.1% of the volume of 2.52 MMT in the month of December 2020. LPG consumption during the month has seen a major dip in non-domestic category followed by dip in domestic category.
5. ATF consumption during December 2021 with a volume of 0.6 MMT registered a growth of 29.4% over a volume of 0.4 MMT during the month of December 2020. Consumption has shown a steady growth month over month for last six months indicating momentum towards normalisation. International air travel continued to remain regulated during the month.
6. Bitumen consumption during December 2021 with a volume of 0.7 MMT recovered to 81.2% over volume of 0.9 MMT in the month of December 2020.
7. Kerosene (SKO) consumption registered a de-growth of -11.7% in December 2021 as compared to December 2020. Ten States/UTs have gone kerosene free while the states of Uttarakhand and Kerala registered nil sales of PDS SKO during the month.

8. Consumption of Natural Gas with a volume of 5.4 BCM during the month of December 2021 recorded a growth of 6.4% on volume of 5.1 BCM in the month of December 2020.

This report analyses the trend of consumption of petroleum products in the country during the month of December 2021. Data on product-wise monthly consumption of petroleum products for December 2021 is uploaded on the PPAC website (www.ppac.gov.in) and on the mobile app "PPACE (PPAC-Easy)". A small summary of Natural Gas consumption is also provided. Detailed NG production and consumption reports are available at www.ppac.gov.in.

Consumption

The growth (%) in consumption of petroleum products, category-wise, for the month of December 2021 is given in Table-1.

Table-1: Petroleum Products Consumption (Quantity in TMT)

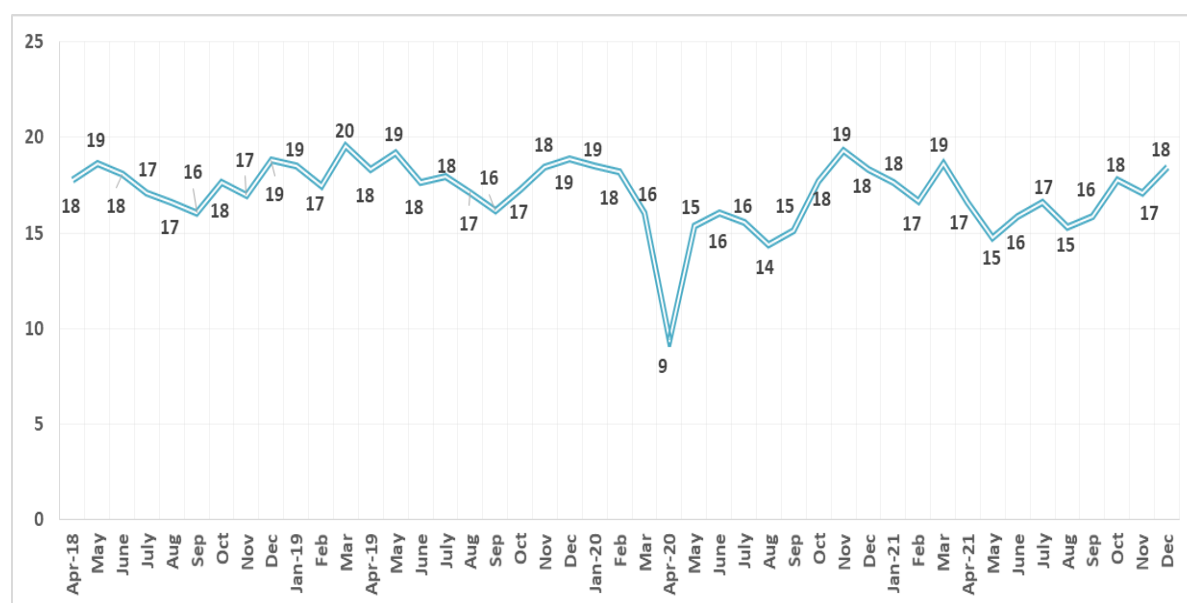
Product	% share	December		
		2020-21	2021-22	Growth (%)
(A) Sensitive Products				
LPG	13.4	2523	2476	-1.9
SKO	0.6	135	119	-11.7
Sub Total	14.1	2659	2595	-2.4
(B) Major Decontrolled Product				
HSD	39.6	7192	7305	1.6
MS	15.3	2706	2816	4.1
Naphtha	6.4	1212	1187	-2.1
ATF	3.0	427	552	29.4
Bitumen	3.8	856	695	-18.8
FO/LSHS	2.9	529	542	2.5
Lubes+Greases	2.1	439	396	-9.8
LDO	0.5	88	93	5.3
Sub Total	73.7	13448	13587	1.0
(C) Other Minor Decontrolled Products				
Pet.Coke	5.7	1244	1060	-14.8
Others*	6.5	1009	1192	18.1
Sub Total	12.2	2254	2252	0
Total	100	18361	18434	0

All Products:

Overall consumption of all petroleum products in December 2021 with a volume of 18.43 MMT recorded a growth of 0.4% over the volume of 18.36 MMT in December 2020. The products which registered a growth in the month of December 2021 were Diesel (HSD) 1.6%, Petrol (MS) 4.1%, Aviation Turbine Fuel (ATF) 29.4%, Furnace Oil & Low Sulphur Heavy Stock (FO/LSHS) 2.5%, Light Diesel Oil (LDO) 5.3% and products categorised under “Others” category 18.1% while the products which registered de-growth during the month were LPG -1.9%, Naphtha -2.1%, Bitumen -18.8%, Lubes & Greases -9.8% and Pet coke -14.8%. Kerosene (SKO) recorded a de-growth of -11.7% during the current month as compared to December 2020.

Figure-1 gives monthly POL consumption (MMT) since April 2018.

Figure-1: Monthly POL consumption (MMT) since April 2018



PPAC analyses the sales recorded by the industry and domestic sales by SEZ units based on available data. Data on direct private imports is received from DGCIS, which is added to the final sales reported by oil companies and domestic sales by SEZ units, for estimation of consumption figures, are available up to October 2021. Private imports data for November 2021 and December 2021 are projected based on November 2020 to October 2021 actual data.

Petrol/Motor Spirit (MS):

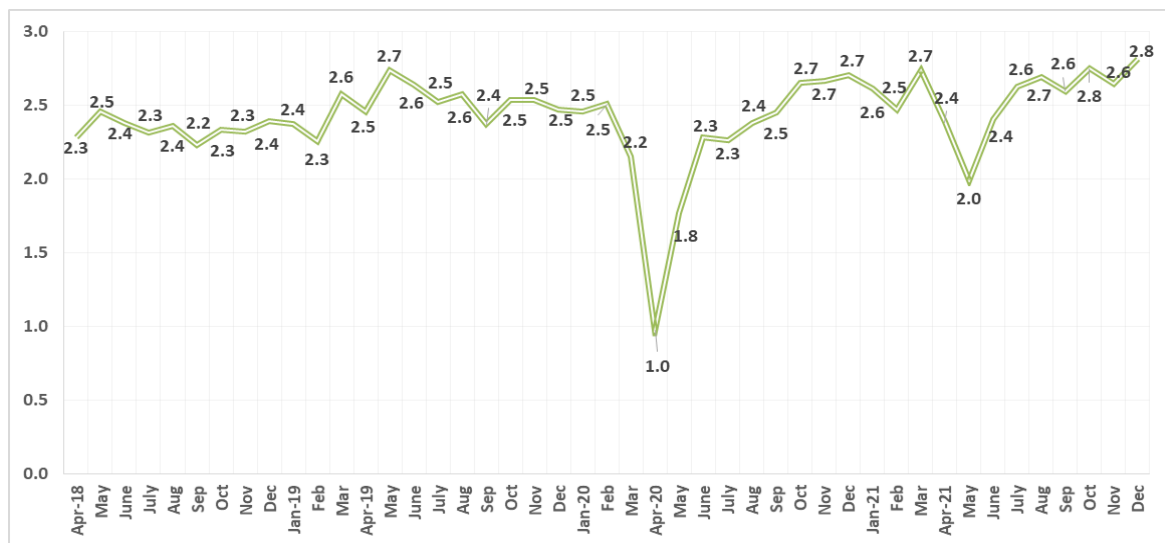
MS (Petrol) consumption during the month of December 2021 with a volume of 2.8 MMT registered a growth of 4.1% over the volume of 2.7 MMT in December 2020. Major factors contributing to MS consumption during the month are as follows:

- All economic activities functioned normally as the cumulative vaccination coverage of the country crossed 144.45 crore as on 30th December 2021.
- Tourism dependent states saw a huge influx of tourists during the winter vacations.

- Urban markets continued to drive consumption as people prepared to welcome the New Year.
- Public transport continued to gain traction during the month as normalisation set in the way people travel.
- Seasonal affects like heavy rains in some eastern states and cold waves in some northern states reined consumption during the month.

Figure-2 gives month-wise MS consumption volume (MMT) since April 2018.

Figure-2: Month wise MS consumption volume (MMT) since April 2018



Other Factors impacting consumption of MS:

Passenger Vehicle Sales:

The Sale of Passenger Vehicles in December 2021 at 2.19 lacs recorded a growth of 1.8% MoM over sale of 2.16 lacs in the month of November 2021. Consumer demand remained upbeat during the month while the car manufacturers tried to keep up with the demand.

Passenger cars and vans recorded a de-growth of -23.1% and -17.1% respectively while utility vehicles registered a growth of 2.5% during the current month as compared to the same period previous year.

Table-2: Passenger vehicle sales in the month of December 2021

Vehicle Segment	December		
	2020-21	2021-22	Growth %age
Passenger Cars	1,46,864	1,12,873	-23.1
Utility Vehicles	94,787	97,137	2.5
Vans	11,347	9,411	-17.1
Total PV	2,52,998	2,19,421	-13.3

Source: SIAM

Two-Wheeler Sales:

Two-wheeler sales with a volume of 10.1 lacs during December 2021 recovered to 95.8% MoM over sale of 10.5 lacs in the month of November 2021

Scooters/Scooterette, Motorcycle and Moped sales registered a de-growth of -24.0%, -2.4% and -44.3% respectively during the current month as compared to the same period previous year.

Table-3: Two Wheelers vehicle sales in the month of December 2021

Vehicle Segment	December		
	2020-21	2021-22	Growth %age
Scooters/Scooterette	3,23,757	2,46,080	-24.0
Motorcycles	7,44,237	7,26,587	-2.4
Mopeds	59,923	33,395	-44.3
Total 2 Wheelers	11,27,917	10,06,062	-10.8

Source: SIAM

High Speed Diesel (HSD):

HSD (Diesel) consumption during the month of December 2021 with a volume of 7.3 MMT registered a growth of 1.6% over volume of 7.2 MMT in the month of December 2020.

Factors affecting diesel consumption during the December 2021 are as follows:

- Heavy rainfall in few eastern states and severe cold waves in few northern states have slowed down the economic activities.
- Rail transports continues to take away share of road transport hence affecting HSD consumption.
- IHS Markit Manufacturing Purchasing Manager's Index (PMI) mellowed to 55.5 in December 2021 from 57.6 in November 2021 indicating expansion and strong demand.
- Sectoral analysis of direct consumer segment indicated that consumption of diesel during December 2021 came down in manufacturing activities by -11.2% of its level in the month of December 2020.

Figure-3 gives month-wise HSD consumption volume (MMT) since April 2018.

Figure-3: Month-wise HSD consumption (MMT) since April 2018

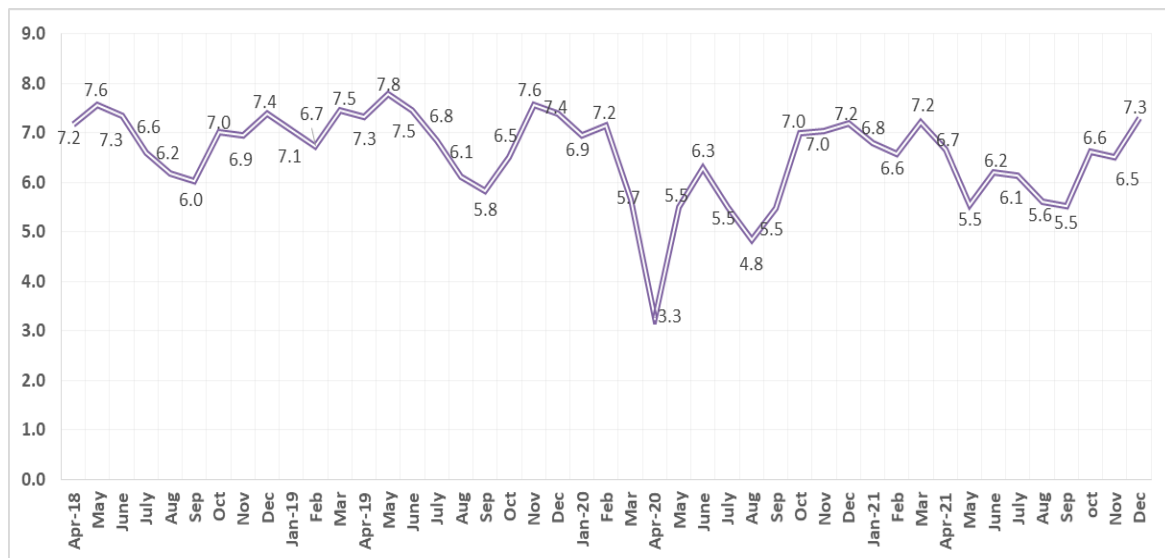
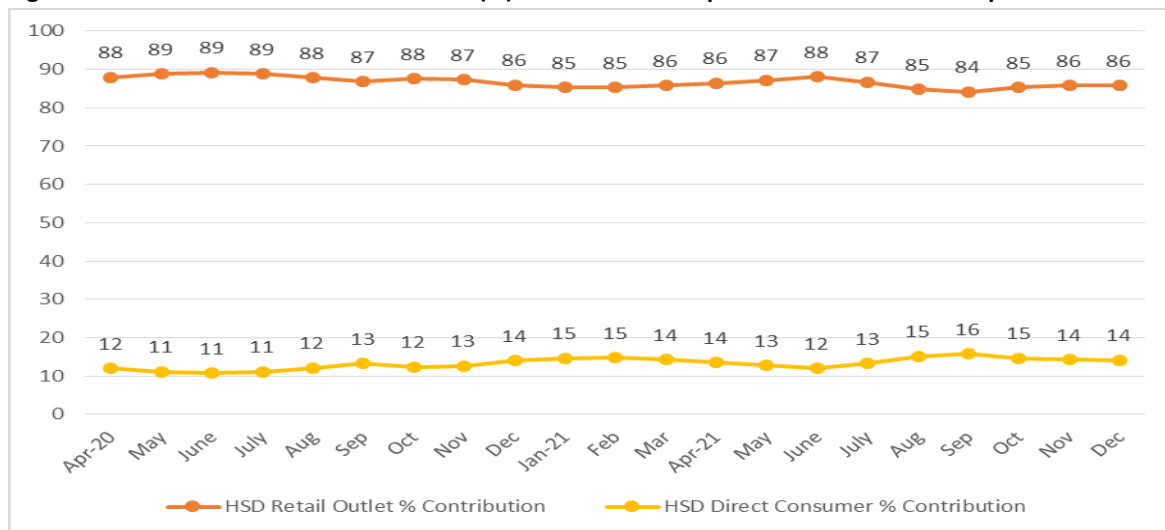


Figure-4 gives a comparison of month-wise percentage of HSD consumption through retail outlets and direct consumer business since April 2020.

Figure-4: Share of Retail & Direct business (%) in Diesel consumption month-wise since April 2020



Other Factors impacting consumption of HSD:

Commercial Vehicle

Based on data reported by individual companies, on an average there has been a growth of around 4% in domestic sales of commercial vehicles during the month of December 2021 as compared to December 2020. The growth in commercial vehicle indicates towards expansion in manufacturing sector and increase in movement of goods by ecommerce sales.

Tractor Sale:

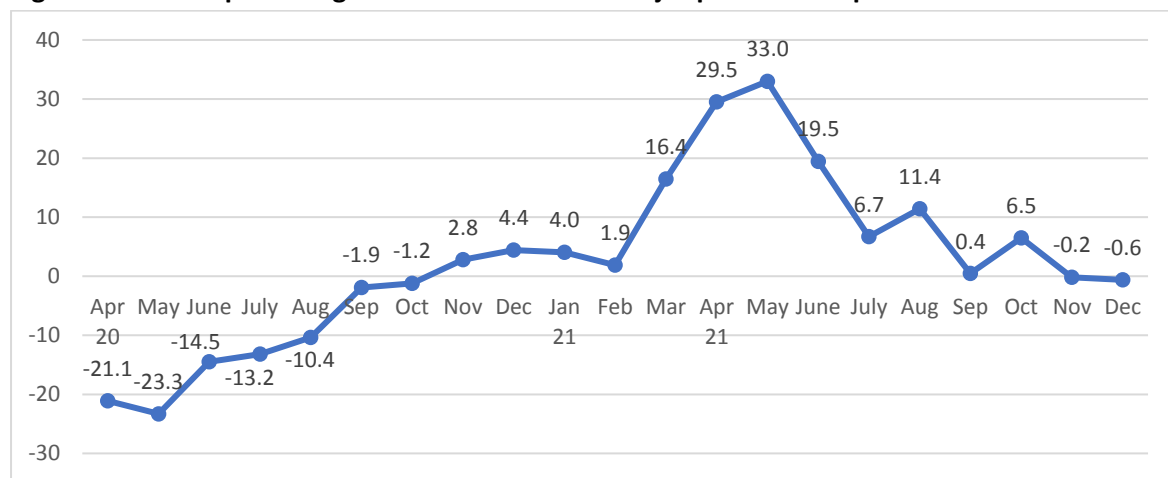
Tractor sales as reported by major individual companies in the month of December 2021 has seen a contraction of about -20% as compared to sales in December 2020. Heavy rainfalls from previous months and high base of last year has contributed to de-growth in the current month.

Port Traffic:

The traffic handled at major ports in India with a volume of 62.9 MMT in December 2021 almost recovered to the volume of 63.3 MMT in the month of December 2020.

Figure-5 gives a trend in % growth of traffic handled at major ports since April 2020.

Figure-5: Growth percentage of traffic handled at major ports since April 2020.



Growth was observed in cargo handled during the month of December 2021 in the port of Kamarajar (Ennore) 16.4%, VO Chidambaranar (Tuticorin) 19.9%, New Mangalore 0.6%, Mumbai 15.3%, JNPT 10.1% and Deendayal (Kandla) 7.7%.

During the period April - December 2021, growth was registered in Petroleum Oil & lubricants (POL) 9.6%, other liquids 10.4%, fertilizer raw 17.6%, thermal & steam coal 30.6%, coking & others coal 0.4%, containers 23.9% and miscellaneous cargo 18.0%. Commodity-wise, the percentage share of POL was maximum i.e. 30.7%, followed by container 23.5%, thermal & steam coal 13.6%, other miscellaneous cargo 11.6%, iron ore & pellets 7.0%, coking & other coal 7.0%, other liquids 4.3%, raw fertilizer 1.2% and finished fertilizer 1.0%.

Table-4: Traffic handled at major ports in December 2021

(Qty in TMT)

Ports	December 2020	December 2021	Growth (%)
Kolkata & Haldia	5,949	5,144	-13.5
Paradip	10,197	9,711	-4.8
Visakhapatnam	6,714	5,929	-11.7
Kamarajar (Ennore)	2,727	3,173	16.4
Chennai	4,698	4,224	-10.1
V.O. Chidambaranar	2,413	2,892	19.9
Cochin	3,198	3,112	-2.7
New Mangalore	3,460	3,482	0.6
Mormugao	2,317	1,444	-37.7
Mumbai	4,755	5,482	15.3
JNPT	6,371	7,017	10.1
Deendayal	10,514	11,319	7.7
Total:	63,313	62,929	-0.6

Source: ipa.nic.in

Power situation:

The position of power supply for the month of December 2021 is given in Table-5. As per the data reported, power deficit position had remained constant at -0.4% as in the month of December 2020. The deficit was mainly in the states of Gujarat and Jharkhand and UT of J&K and Ladakh. The requirement of power in December 2021 at 1,09,664 MU has recorded a growth of 2.7% over requirement of power at 1,06,560 MU in the month of December 2020.

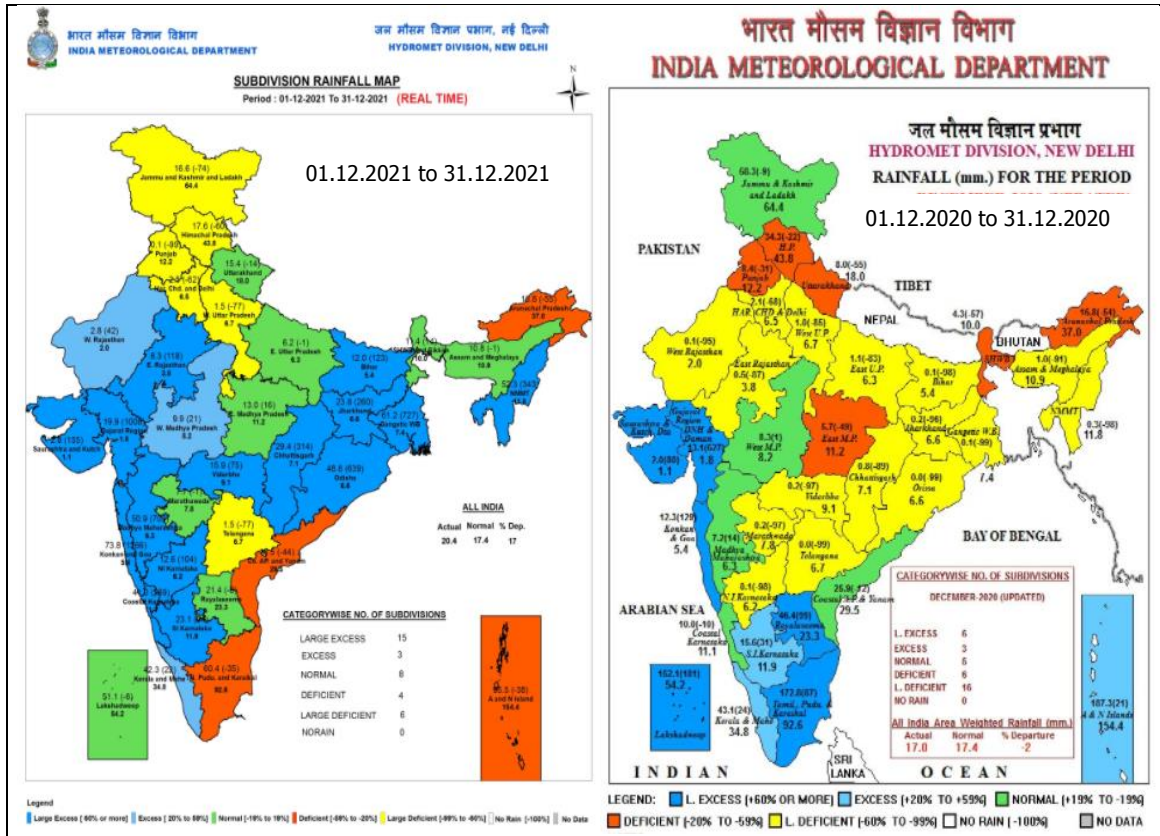
Table-5: Power supplied and deficit for December 2021

Region	December 2021		
	Requirement	Supplied (MU)	Deficit %
North	32,039	31,781	-0.8%
West	37,829	37,766	-0.2%
South	26,976	26,976	0.0%
East	11,498	11,408	-0.8%
North-East	1,322	1322	0.0%
Total	1,09,664	1,09,252	-0.4%

Source: Central Electricity Authority (CEA)

Seasonal rainfall scenario:

The rainfall in the country during December 2021 was 17% above normal precipitation. A rainfall of 20.4 mm was recorded in the month of December 2021 as against a normal reading of 17.4 mm. Out of total 36 subdivisions, 18 divisions received from excess to large excess rainfall, 10 divisions received deficient to no rainfall whereas 8 divisions received normal rainfall.



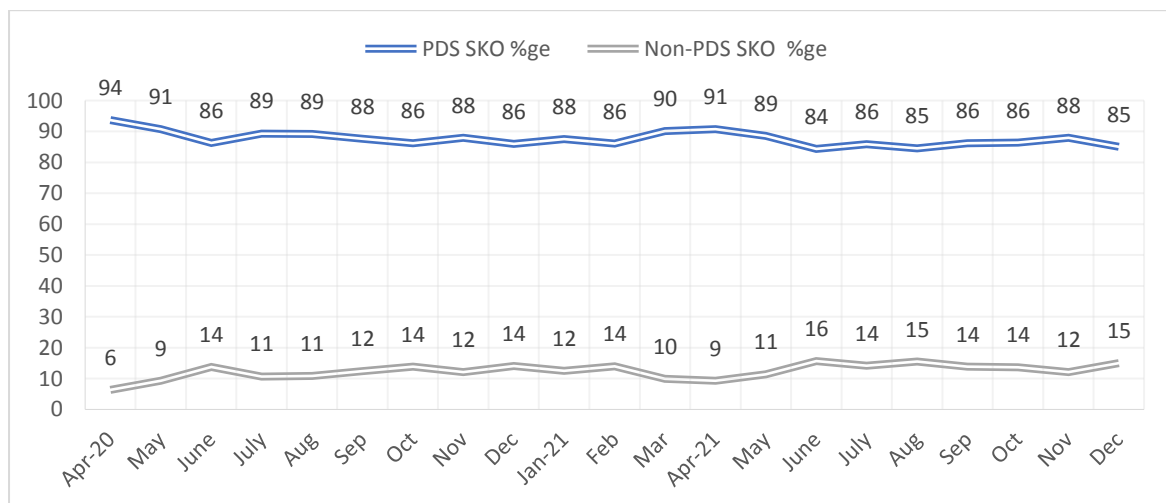
Source: India Meteorological Department (IMD)

Kerosene:

Kerosene consumption registered a de-growth of -11.7% during the month of December 2021 as compared to December 2020. There are ten states/UTs who have voluntarily surrendered the PDS kerosene quota. All UTs except the UT of J&K, Ladakh and Lakshadweep and the states of Andhra Pradesh, Delhi, Haryana, Punjab, Uttar Pradesh and Rajasthan have been declared kerosene free. The states of Kerala and Uttrakhand registered nil sales of PDS SKO during the month.

Figure-6 gives a comparison of SKO sales in PDS and Non-PDS since April 2020.

Figure-6: Month-wise PDS & Non PDS SKO consumption in share (%) since April 2020

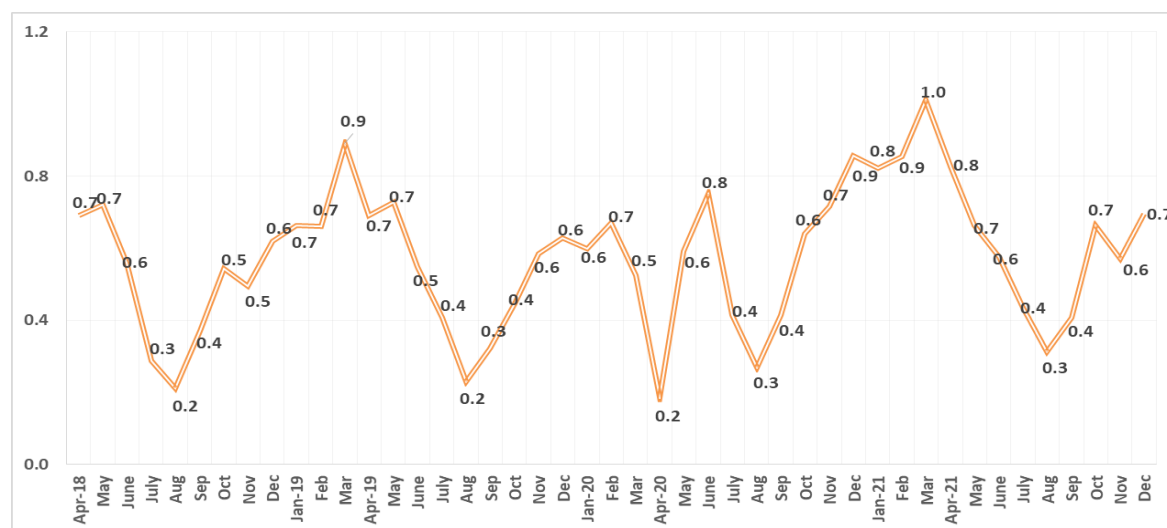


Bitumen:

Bitumen consumption during December 2021 with a volume of 0.7 MMT recovered to 81.2% of volume of 0.9 MMT in the month of December 2020. Road construction are yet to pick pace from the setback of rainfalls in the previous month.

Figure-7 gives the month wise bitumen consumption since April 2018.

Figure-7: Month-wise Bitumen consumption (MMT) since April 2018



LPG:

Total LPG consumption during the month with a volume of 2.48 MMT recovered to 98.1% of volume of 2.52 MMT in the month of December 2020. LPG consumption recorded a cumulative growth of 1.6% during the period April – December 2021 compared to the same period last year. LPG consumption during the month has seen a major dip in non-domestic category followed by dip in domestic category.

Last year during December 2020, a growth of 7.2% was observed and the cumulative growth during April-December 2020 was 5.4%. During December 2021, out of the five regions, Northern region had the highest share in total PSU LPG sales of 32.1% followed by Southern region at 27.7%, Western region at 21.9%, Eastern region at 15.7% and North Eastern region at 2.6%.

Domestic LPG is supplied in 14.2 kg and 5 kg cylinders to domestic consumers for use as kitchen fuel. Packed Non-Domestic is sold to commercial or industrial consumers in cylinders having water capacity less than 1000 liter. Bulk LPG is primarily sold to Industries in large containers with water capacity greater than 1000 liter for industrial applications. Auto LPG is an automotive fuel used by three and four-wheeler vehicles

PSU LPG Packed Domestic category recorded a growth of -0.8% during December 2021 and a cumulative de-growth of -0.5% during April-December 2021. Last year during December 2020, a growth of 10.2% was observed and the cumulative growth during April-December 2020 was 11.3%. During April-December 2021, around 141.3 lakh new connections and 41.7 lakh DBCs were released. A total of 8.96 crore BPL households have been covered under PMUY 1.0 & 2.0 till

31.12.2021 since inception of the scheme. During December 2021, the region-wise share of LPG Packed Domestic consumption was highest in Northern region (33.4%) followed by Southern region (26.2%), Western region (21%), Eastern region (16.7%) and North-Eastern region (2.7%). During December 2021, the six states with the highest LPG-Packed domestic sales share were Uttar Pradesh (13.8%), Maharashtra (10.9%), Tamil Nadu (7.7%) West Bengal (7.1%), Karnataka (6.5%) and Rajasthan (5.7%). During December 2021, percentage share of LPG-Packed Domestic is 90.3% of total PSU LPG sales whereas it was 89.3% in December 2020.

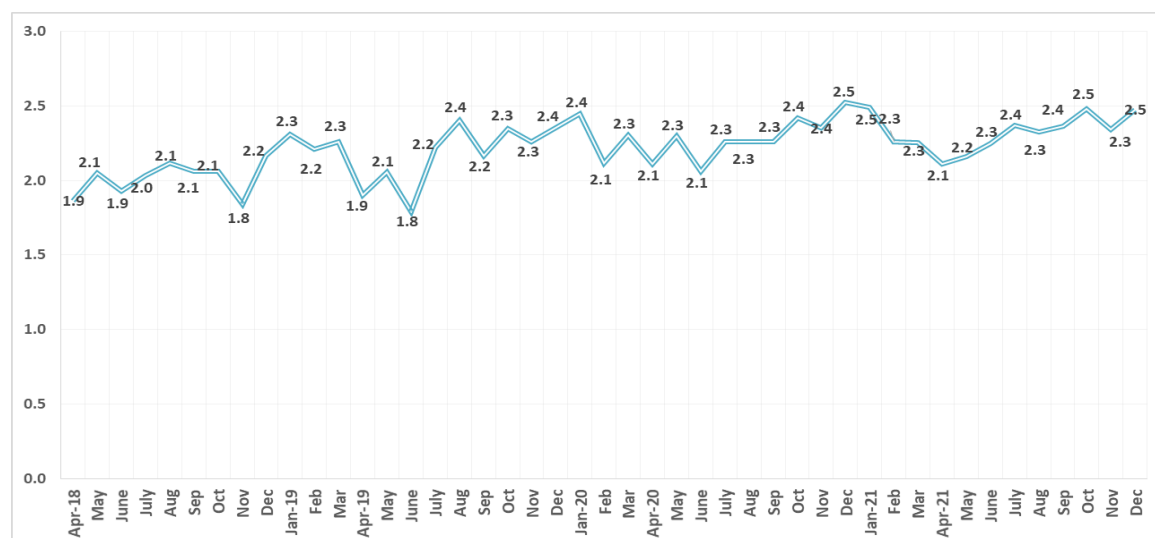
PSU LPG Packed Non-Domestic category recorded a growth of -10% in December 2021 and a cumulative growth of 29.5% during April-December 2021. Last year during December 2020, a de-growth of -14.7% was observed and the cumulative de-growth during April-December 2020 was -36.3%. Share of LPG Packed Non-Domestic in total PSU LPG Sales is 7.9% in December 2021 compared to 8.7% in December 2020. Region-wise share of LPG Packed Non-Domestic consumption was highest in Southern region (40.5%) followed by Western region (30.3%), Northern region (21.4%), Eastern region (6.7%) and North-Eastern region (1.1%) during December 2021.

PSU Bulk LPG category has registered a growth of -22.1% during December 2021 and a cumulative growth of 11.3% during April-December 2021. Last year in the month of December 2020, there was a growth of 52.1% while for the period April-December 2020, a growth of 17.6% was witnessed. Percentage share of Bulk LPG in total PSU LPG sales is 1.1% during December 2021 whereas it was 1.3% in December 2020.

PSU Auto LPG category registered a growth of -15.3% in December 2021 and a cumulative growth of 12.9% during April-December 2021. The sales volume change was about -2 TMT in December 2021 as compared to December 2020. Last year in the month of December 2020 a de-growth of -15.4% was observed while there was a cumulative de-growth of -39.3% during April-December 2020. During December 2021, the percentage share of Auto LPG is 0.4% of total PSU LPG sales whereas it was 0.5% in December 2020.

Figure-8 gives the month-wise LPG consumption since April 2018.

Figure-8: Month-wise LPG consumption (MMT) since April 2018



Naphtha:

Naphtha consumption during the month of December 2021 with a volume of 1.19 MMT recovered to 97.9% on volume of 1.21 MMT in the month of December 2020.

Petrochemical industries remain the main consumers of naphtha. Naphtha is a feedstock for fertilizer and petrochemical industry and is also used as a fuel for electricity generation. Out of the total naphtha consumption of 1187 TMT during the month, petrochemical sector consumed 1030 TMT with a minor growth of 11 TMT and miscellaneous sector consumed 150 TMT with a de-growth of -26 TMT.

ATF:

ATF consumption during December 2021 registered a growth of 29.4% over the volume of December 2020. Consumption has been boosted by year end winter vacation travels. International air travel continued to remain regulated during the month.

Passengers carried by domestic airlines during the month of December 2021 stood at 112 lakhs against 73.3 lakhs during December 2020. There has been a steady increase in passenger traffic month over month since last seven months.

Figure-9 gives the month-wise passengers carried by domestic airlines in millions since April 2020.

Figure-9: Month-wise passengers carried by domestic airlines in millions since April 2018.

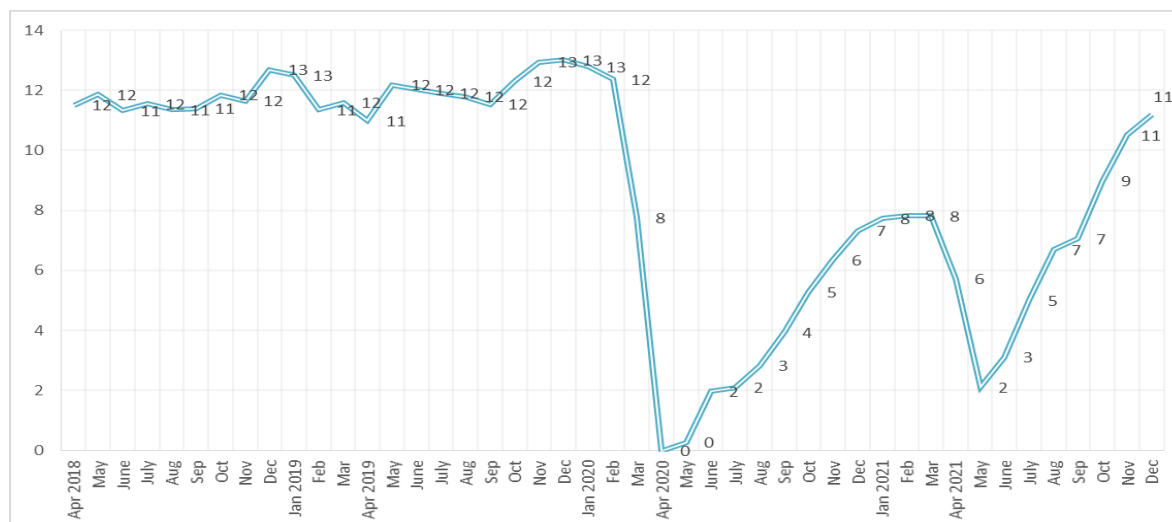
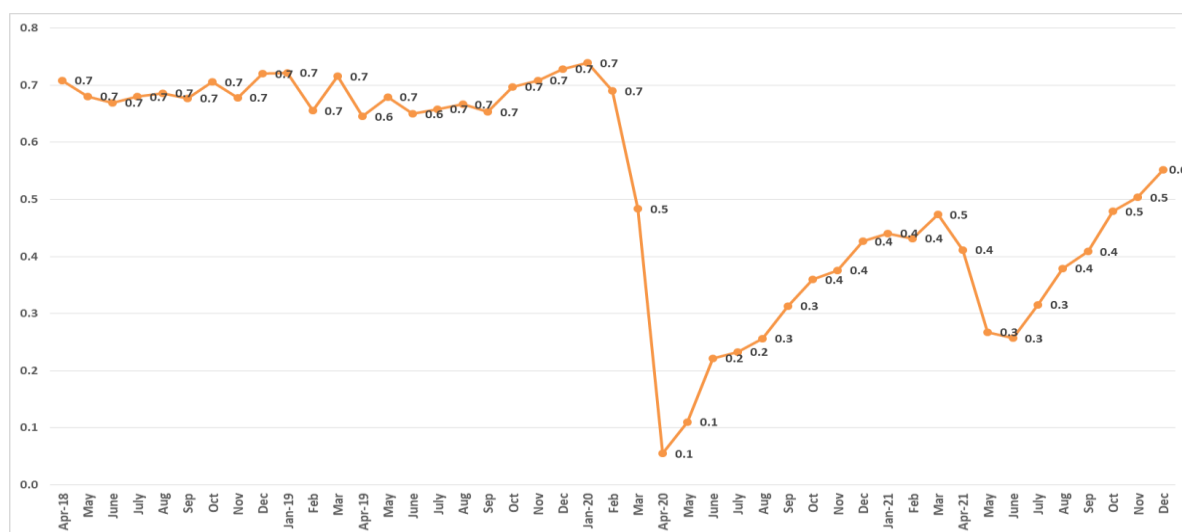


Figure-10 gives the month-wise ATF consumption since April 2018.

Figure-10: Month-wise ATF consumption (MMT) since April 2018



Furnace oil & Low sulphur heavy stock (FO/LSHS):

FO/LSHS consumption during December 2021 with a volume of 0.54 MMT recorded a growth of 2.5% over volume of 0.53 MMT consumed in the month of December 2020.

Consumption of FO/LSHS is largely driven by manufacturing and other miscellaneous sector in addition to shipping, power, road transport, agriculture, mining and others. Major growth in consumption during the month was recorded in manufacturing, and power sector. Manufacturing consumed 207 TMT, miscellaneous 176 TMT, shipping 78 TMT and power generation 28 TMT out of the total consumption of 542 TMT of FO/LSHS in the month of December 2021.

Petcoke:

Petcoke consumption during the month of December 2021 with a volume of 1.1 MMT recovered to 85.2% on volume of 1.2 MMT in the month of December 2020. Petcoke consumption has seen a de-growth in miscellaneous sector by -120 TMT followed by manufacturing -40 TMT, mining -21 TMT and power generation -7 TMT during the month.

Directorate General of Foreign Trade (DGFT) under Ministry of Commerce and Industry has banned import of petcoke for use as fuel but has allowed its import only for use as feedstock in some select industries such as cement, lime kiln, calcium carbide and gasification industries. Manufacturing sector consumed 461 TMT and miscellaneous industrial uses consumed 439 TMT out of total 1060 TMT of petcoke consumed in the month of December 2021.

Light Diesel Oil:

LDO consumption during the month with a volume of 0.093 MMT registered a growth of 5.3% on volume of 0.088 MMT in the month of December 2020. LDO is extensively used in various types of furnaces. Consumption in power generation and manufacturing of 25 TMT and 28 TMT respectively were the major sectors contributing to the total consumption of 93 TMT LDO during the month.

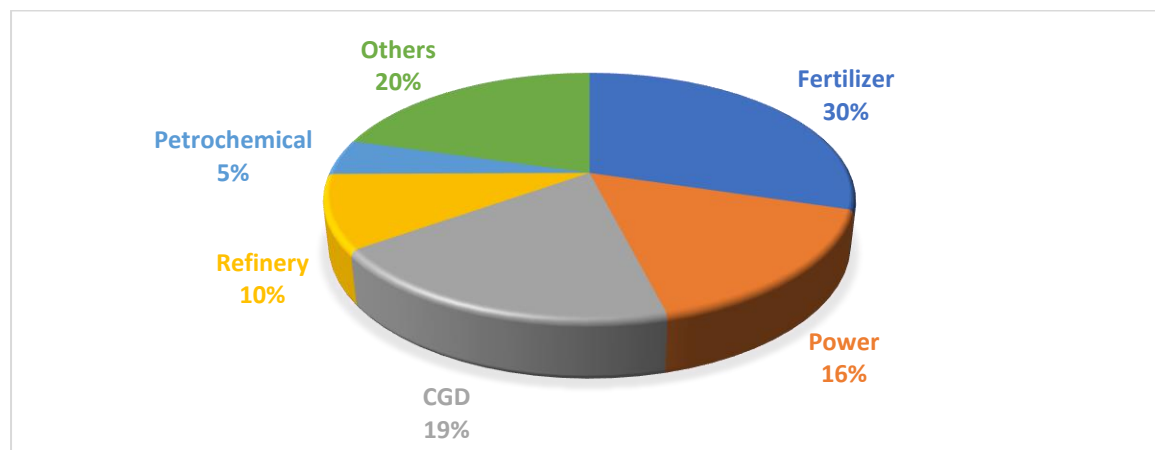
Natural Gas:

Natural Gas is used as a feedstock in several industries like fertilizers, plastics and other commercially important organic chemicals and used as a fuel for electricity generation, heating purpose in industrial and commercial units. Natural gas is also used for cooking in domestic households and as a transportation fuel for vehicles. Consumption of Natural Gas with a volume of 5.4 BCM (billion cubic metres) during the month of December 2021 recorded a growth of 6.4% on volume of 5.1 BCM in the month of December 2020.

Approximate sector wise consumption of Natural gas for the period of April – November 2021 was fertilizer (30%), power (16%), City Gas Distribution (CGD) (19%), refinery (10%), petrochemicals (5%) and others (20%).

Figure-12 gives the sector wise consumption of Natural Gas for April – November 2021.

Figure-12: Sector wise consumption of Natural Gas for April – November 2021



Industry Consumption Trend Analysis 2021-22 (Provisional)							
('000 MT)							
Product	April - March	December			April - December		
	2020-21	2020-21	2021-22	Growth (%)	2020-21	2021-22	Growth (%)
(A) Sensitive Products							
LPG	27558	2523	2476	-1.9	20550	20883	1.6
SKO	1798	135	119	-11.7	1360	1136	-16.5
Sub Total	29356	2659	2595	-2.4	21910	22019	0.5
(B) Major Decontrolled Product							
HSD	72713	7192	7305	1.6	52113	56095	7.6
MS	27969	2706	2816	4.1	20145	22919	13.8
Naphtha	14100	1212	1187	-2.1	10395	10573	1.7
ATF	3698	427	552	29.4	2352	3575	52.0
Bitumen	7524	856	695	-18.8	4838	5145	6.3
FO/LSHS	5586	529	542	2.5	4088	4563	11.6
Lubes+Greases	4097	439	396	-9.8	2919	3315	13.6
LDO	855	88	93	5.3	577	761	32.0
Sub Total	136543	13448	13587	1.0	97427	106946	9.8
Sub - Total (A) + (B)	165899	16107	16182	0.5	119337	128965	8.1
(C) Other Minor Decontrolled Products							
Pet.Coke	15605	1244	1060	-14.8	12525	9848	-21.4
Others*	12791	1009	1192	18.1	9494	9506	0.1
Sub Total	28396	2254	2252	-0.1	22018	19355	-12.1
Total	194295	18361	18434	0.4	141355	148320	4.9

*Others include sulphur, propylene, propane, reformat, butane, MTO (Mineral Turpentine oil) etc

Industry Consumption Trend Analysis 2021-22 (Provisional)							
Million Barrels per day							
Product	April - March	December			April - December		
	2020-21	2020-21	2021-22	Growth (%)	2020-21	2021-22	Growth (%)
(A) Sensitive Products							
LPG	0.88	0.94	0.93	-1.9	0.87	0.88	1.6
SKO	0.04	0.04	0.03	-11.7	0.04	0.03	-16.5
Sub Total	0.92	0.98	0.96	-2.2	0.91	0.91	0.8
(B) Major Decontrolled Product							
HSD	1.52	1.77	1.79	1.6	1.44	1.55	7.6
MS	0.68	0.78	0.81	4.1	0.65	0.74	13.8
Naphtha	0.34	0.34	0.33	-2.1	0.33	0.34	1.7
ATF	0.08	0.11	0.14	29.4	0.07	0.11	52.0
Bitumen	0.12	0.17	0.14	-18.8	0.11	0.11	6.3
FO/LSHS	0.10	0.12	0.12	2.5	0.10	0.11	11.6
Lubes+Greases	0.08	0.10	0.09	-9.8	0.08	0.09	13.6
LDO	0.02	0.02	0.02	5.3	0.02	0.02	32.0
Sub Total	2.94	3.40	3.45	1.4	2.79	3.07	9.9
Sub - Total (A) + (B)	3.86	4.38	4.40	0.6	3.70	3.98	7.6
(C) Other Minor Decontrolled Products							
Pet.Coke	0.24	0.22	0.19	-14.8	0.25	0.20	-21.4
Others*	0.28	0.26	0.31	18.1	0.28	0.28	0.1
Sub Total	0.52	0.48	0.50	3.0	0.53	0.48	-10.1
Total	4.38	4.86	4.90	0.8	4.23	4.46	5.4

*Others include sulphur, propylene, propane, reformat, butane, MTO (Mineral Turpentine oil) etc

Conversion factors taken for TMT to barrel conversion

Conversion factor (approx)		
Product	Weight (MT)	Bbl
LPG	1	11.6
SKO	1	8.1
Diesel	1	7.6
Petrol	1	8.9
Naphtha	1	8.7
ATF	1	8.1
Bitumen	1	6.1
Furnace Oil	1	6.7
Lubes	1	7.2
Light Diesel Oil	1	7.4
Petcoke	1	5.5
Product Basket (for Others)	1	8.1