

PPAC's Snapshot of India's Oil & Gas data

Abridged Ready Reckoner

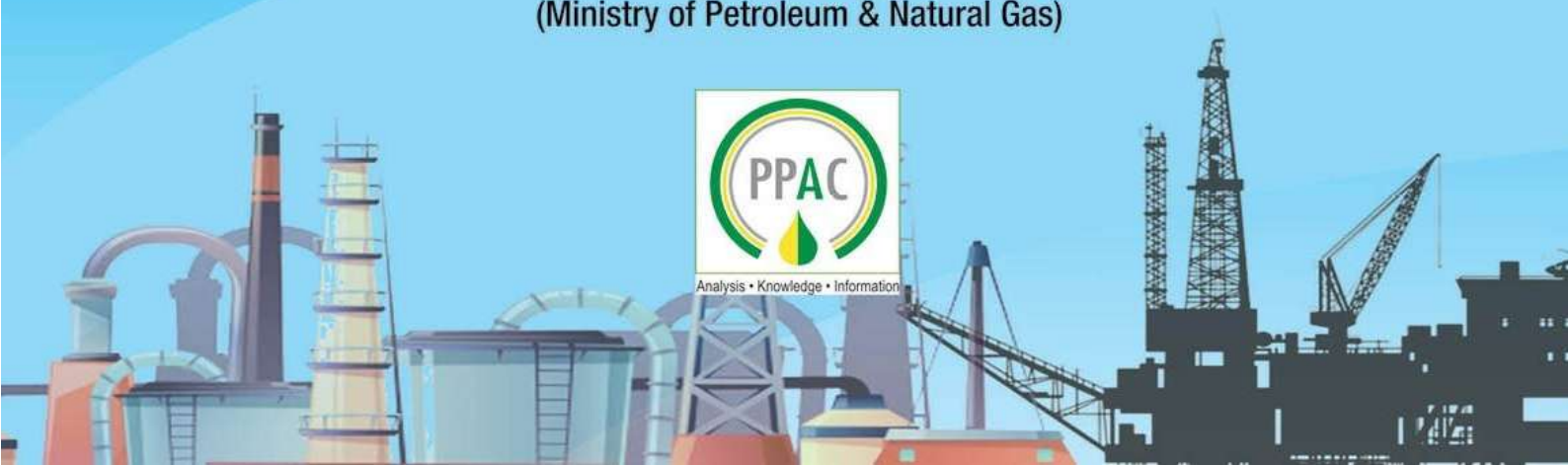
July 2021

Petroleum Planning & Analysis Cell

(Ministry of Petroleum & Natural Gas)



Analysis • Knowledge • Information



PPAC's Snapshot of India's Oil & Gas data

Abridged Ready Reckoner

July, 2021

Petroleum Planning & Analysis Cell

(Ministry of Petroleum & Natural Gas)



As on 19.08.2021

Petroleum Planning & Analysis Cell (PPAC), an attached office of the Ministry of Petroleum & Natural Gas (MoPNG), Government of India, collects and analyses data on the Oil and Gas sector. It disseminates many reports on the Oil & Gas sector to the various stakeholders. The data is obtained from the Public Sector companies, Government agencies as well as the Private companies. Given the ever-increasing demand for energy and transition of energy demand to renewables and Biofuels, Policy makers and Analysts need to be well informed about the updated trends in the Oil & Gas industry.

The PPAC's Snapshot of India's Oil & Gas data (Abridged Ready Reckoner) provides a comprehensive compilation of the latest data/information in a single volume for the latest month and historical time series. The Snapshot of India's Oil & Gas data is also published on PPAC's website (www.ppac.gov.in) and is accessible on mobile app-PPACE.

This publication is a concerted effort by all divisions of PPAC. The cooperation of the oil and gas industry is acknowledged for their timely inputs.

Table of contents

Table	Description	Page No.
	Highlights for the month	2-3
	ECONOMIC INDICATORS	
1	Selected indicators of the Indian economy	5
2	Crude oil, LNG and petroleum products at a glance; Graph	6-7
	CRUDE OIL, REFINING & PRODUCTION	
3	Indigenous crude oil production	9
4	Domestic oil & gas production vis-à-vis overseas production	9
5	High Sulphur (HS) & Low Sulphur (LS) Crude Oil processing	9
6	Quantity and value of crude oil imports	10
7	Self-sufficiency in petroleum products	10
8	Refineries: Installed capacity and crude oil processing	11-12
9	Crude oil and product pipeline network	12
	Oil and Gas map of India	13
10	Gross Refining Margins (GRM) of companies; Graph	14-15
	CONSUMPTION	
11	Production and consumption of petroleum products; Graph	17-18
12	Kerosene allocation vs upliftment	19
13	Ethanol blending programme	19
14	Industry marketing infrastructure	19
	LIQUEFIED PETROLEUM GAS (LPG)	
15	LPG consumption	21
16	LPG marketing at a glance; Graph	21-22
17	Region-wise data on LPG marketing; Graph	23
	NATURAL GAS	
18	Natural gas at a glance; Graph	25
19	Coal Bed Methane (CBM) gas development in India	26
20	Major natural gas pipeline network	26
21	Existing LNG terminals	26
22	Status of PNG connections & CNG stations across India	27-31
23	Domestic natural gas price and gas price ceiling	32
24	CNG/PNG prices in selected cities	32
	TAXES & DUTIES ON PETROLEUM PRODUCTS	
25	Information on prices, taxes and under-recoveries/subsidies	34-35
	MISCELLANEOUS	
26	Capital expenditure of PSU oil companies	37
27	Conversion factors and volume conversion	38

Highlights for the month

- The consumption of petroleum products during April-July 2021 with a volume of 65.3 MMT reported a growth of 15.8% compared to the volume of 56.4 MMT during the same period of the previous year. Except SKO all other petroleum products reported a growth in consumption during April-July 2021 compared to the same period of the previous year. The consumption of petroleum products during July 2021 recorded a growth of 7.9% compared to the same period of the previous year.
- Indigenous crude oil and condensate production during July 2021 was lower by 3.2 % than that of July 2020 as compared to a de-growth of 1.8% during June 2021. OIL registered a growth of 1.1 % and ONGC registered a de-growth of 4.2 % during July 2021 as compared to July 2020. PSC registered de-growth of 2.2 % during July 2021 as compared to July 2020. De-growth of 3.4 % was registered in the total crude oil and condensate production during April- July 2021 over the corresponding period of the previous year.
- Total natural gas consumption (including internal consumption) for the month of July 2021 was 5346 MMSCM which was 4.7% lower than the corresponding month of the previous year. The cumulative consumption of 20936 MMSCM for the current year till July 2021 was higher by 10.9% compared with the corresponding period of the previous year.
- Crude oil processed during July 2021 was 19.4 MMT, which was 9.6 % higher than July 2020 as compared to a growth of 4.9 % during June 2021. Growth of 15.6 % was registered in the total crude oil processing during April- July 2021 over the corresponding period of the previous year.
- Production of petroleum products saw a growth of 6.7 % during July 2021 over July 2020 as compared to a growth of 2.4 % during June 2021. Growth of 13.1 % was registered in the total POL production during April- July 2021 over the corresponding period of the previous year.
- Ethanol blending with Petrol was 9.1% during July 2021 and cumulative during December 2020- July 2021 was 8%.

<ul style="list-style-type: none"> Gross production of natural gas for the month of July 2021 was 2892 MMSCM which was higher by 18.4% compared with the corresponding month of the previous year. The cumulative gross production of natural gas of 11060 MMSCM for the current financial year till July, 2021 was higher by 2.9% compared with the corresponding period of the previous year.
<ul style="list-style-type: none"> Crude oil imports increased by 21.8% and 16.2% during July 2021 and April-July 2021 respectively as compared to the corresponding period of the previous year.
<ul style="list-style-type: none"> POL products imports decreased by 7.7% and 4.6% during July 2021 and April-July 2021 respectively as compared to the corresponding period of the previous year. Decrease in POL products imports during April-July 2021 was due to decrease in imports of petcoke, high speed diesel (HSD), liquified petroleum gas (LPG) and aviation turbine fuel (ATF).
<ul style="list-style-type: none"> LNG import for the month of July, 2021(P) was 2528 MMSCM which was 14.9% lower than the corresponding month of the previous year. The cumulative import of 10161 MMSCM for the current year till July, 2021 was higher by 1.9% compared with the corresponding period of the previous year.
<ul style="list-style-type: none"> Exports of POL products increased by 19.9% and decreased by 1.3% during July 2021 and April-July 2021 respectively as compared to the corresponding period of the previous year. Decrease in POL products exports during April-July 2021 (P) was due to decrease in exports of petcoke/CBFS, high speed diesel (HSD), naphtha and LOBS/Lube oil.
<ul style="list-style-type: none"> The price of Brent Crude averaged \$75.03/bbl during July, 2021 as against \$73.04/bbl during June 2021 and \$43.35/bbl during July 2020. The Indian basket crude price averaged \$73.54/bbl during July 2021 as against \$71.98/bbl during June 2021 and \$43.35 /bbl during July 2020.



PART-A

Economic Indicators

1. Selected indicators of the Indian economy

Economic indicators		Unit/ Base	2015-16	2016-17	2017-18	2018-19	2019-20	2020-21
1	Population (Census 2011)	Billion	1.2	-	-	-	-	-
2	GDP at constant (2011-12 Prices)	Growth %	8.0	8.3	6.8 3rd RE	6.5 2nd RE	4.0 1st RE	-7.3 PE
3	Agricultural Production (Food grains)	MMT	251.5	275.1	285.0	285.2	297.5	308.7 4th AE
		Growth %	-0.2	9.4	3.6	0.1	4.3	3.7
4	Gross Fiscal Deficit (as percent of GDP)	%	3.9	3.5	3.5	3.4	4.6	9.5 RE

Economic indicators	Unit/ Base	2019-20	2020-21 (P)	July		April-July		
				2020-21 (P)	2021-22 (P)	2020-21 (P)	2021-22 (P)	
5	Index of Industrial Production (Base: 2011-12)	Growth %	-0.8	-8.4	-16.6*	13.6* QE	-35.6#	45.0#
6	Imports	\$ Billion	474.7	393.6	28.5	46.4	88.9	172.6
7	Exports	\$ Billion	313.4	291.2	23.6	35.4	75.0	130.8
8	Trade Balance	\$ Billion	-161.3	-102.4	-4.8	-11.0	-14.0	-41.7
9	Foreign Exchange Reserves [@]	\$ Billion	475.6	579.3	534.6	620.6	-	-

IIP is for the month of * June and #Apr-June; @2019-20-as on March 27, 2019, 2020-21-as on March 26, 2021, July 2020- as on July 31, 2020 and July 2021-as on July 30, 2021; PE: Provisional Estimates; AE-Advanced Estimates; RE-Revised Estimates; QE-Quick Estimates.

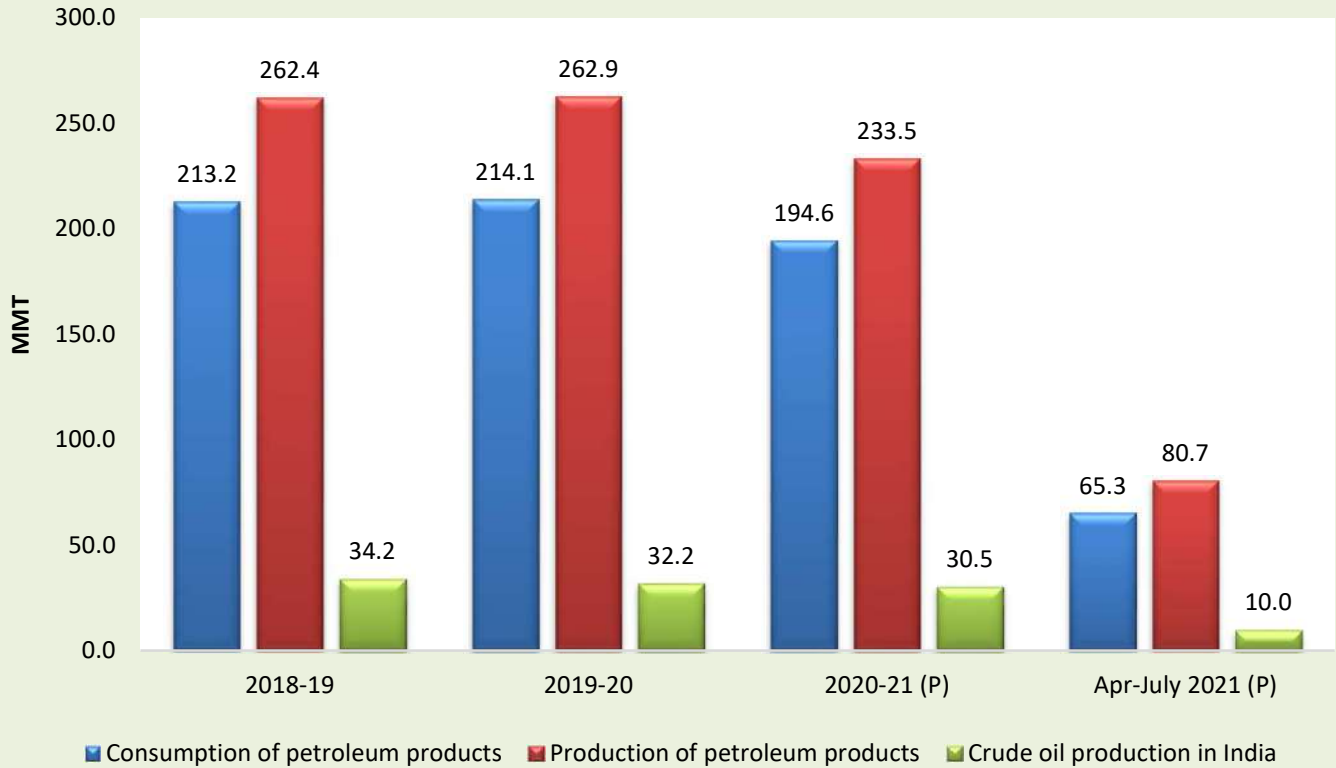
Source: Ministry of Commerce & Industry, Ministry of Statistics and Programme Implementation, Ministry of Agriculture & Farmer's Welfare, Ministry of Finance, Reserve Bank of India

2. Crude oil, LNG and petroleum products at a glance

Details		Unit/ Base	2019-20	2020-21 (P)	July		April-July	
					2020-21 (P)	2021-22 (P)	2020-21 (P)	2021-22 (P)
1	Crude oil production in India [#]	MMT	32.2	30.5	2.6	2.5	10.3	10.0
2	Consumption of petroleum products*	MMT	214.1	194.6	15.6	16.8	56.4	65.3
3	Production of petroleum products	MMT	262.9	233.5	19.4	20.7	71.4	80.7
4	Gross natural gas production	MMSCM	31,184	28,672	2,443	2,892	10,749	11,060
5	Natural gas consumption	MMSCM	64,144	60,646	5,610	5,346	18,870	20,936
6	Imports & exports [^] :							
	Crude oil imports	MMT	227.0	198.1	12.3	15.0	57.2	66.4
		\$ Billion	101.4	62.7	3.8	8.0	12.3	33.1
	Petroleum products (POL) imports*	MMT	43.8	43.5	4.0	3.7	14.5	13.9
		\$ Billion	17.7	14.2	1.1	1.6	3.7	5.4
	Gross petroleum imports (Crude + POL)	MMT	270.7	241.6	16.4	18.8	71.7	80.3
		\$ Billion	119.1	76.9	4.9	9.6	16.1	38.5
	Petroleum products (POL) export	MMT	65.7	56.8	3.9	4.7	20.1	19.9
		\$ Billion	35.8	21.4	1.5	2.9	5.4	11.8
	LNG imports*	MMSCM	33,887	32,861	2,971	2,528	9,969	10,161
		\$ Billion	9.5	7.4	0.5	0.9	1.9	3.1
7	Petroleum imports as percentage of India's gross imports (in value terms)	%	25.1	19.5	17.3	20.7	18.1	22.3
8	Petroleum exports as percentage of India's gross exports (in value terms)	%	11.4	7.3	6.2	8.3	7.2	9.0
9	Import dependency of crude (on consumption basis)	%	85.0	84.4	83.5	84.9	82.1	85.4

[#]Includes condensate; *Jul 2020- Jul 2021 2021 DGCIS data prorated;

Crude Oil & Petroleum Products (MMT)





PART-B

Crude Oil, Refining & Production

3. Indigenous crude oil production (Million Metric Tonnes)

Details	2019-20	2020-21 (P)	July			April-July		
			2020-21 (P)	2021-22 Target*	2021-22 (P)	2020-21 (P)	2021-22 Target*	2021-22 (P)
ONGC	19.2	19.1	1.6	1.7	1.6	6.4	6.7	6.2
Oil India Limited (OIL)	3.1	2.9	0.3	0.3	0.3	1.0	1.0	1.0
Private / Joint Ventures (JVs)	8.2	7.1	0.6	0.7	0.6	2.4	2.5	2.4
Total Crude Oil	30.5	29.1	2.5	2.6	2.4	9.8	10.2	9.5
ONGC condensate	1.4	1.1	0.1		0.1	0.4		0.3
PSC condensate	0.3	0.3	0.02		0.03	0.08		0.10
Total condensate	1.6	1.4	0.1		0.1	0.5		0.4
Total (Crude + Condensate) (MMT)	32.2	30.5	2.6	2.6	2.5	10.3	10.2	10.0
Total (Crude + Condensate) (Million Bbl/Day)	0.64	0.61	0.62		0.60	0.62		0.60

*Provisional targets inclusive of condensate.

4. Domestic oil & gas production vis-à-vis overseas production

Details	2019-20	2020-21 (P)	July		April-July	
			2020-21 (P)	2021-22 (P)	2020-21 (P)	2021-22 (P)
Total domestic production (MMTOE)	63.4	59.2	5.1	5.4	21.1	21.0
Overseas production (MMTOE)	24.5	21.9	1.8	1.9	7.4	7.3
Overseas production as percentage of domestic production	38.7%	37.0%	35.7%	34.3%	35.4%	34.8%

Source: ONGC Videsh, GAIL, OIL, IOCL, HPCL & BPRL

5. High Sulphur (HS) & Low Sulphur (LS) crude oil processing (MMT)

Details		2019-20	2020-21 (P)	July		April-July	
				2020-21 (P)	2021-22 (P)	2020-21 (P)	2021-22 (P)
1	High Sulphur crude	192.4	161.4	12.6	14.7	48.2	57.4
2	Low Sulphur crude	62.0	60.3	5.1	4.7	18.1	19.2
Total crude processed (MMT)		254.4	221.8	17.7	19.4	66.3	76.6
Total crude processed (Million Bbl/Day)		5.09	4.45	4.18	4.58	3.98	4.60
Percentage share of HS crude in total crude oil processing		75.6%	72.8%	71.4%	75.6%	72.7%	74.9%

6. Quantity and value of crude oil imports

Year	Quantity (MMT)	\$ Million	Rs. Crore
2019-20	227.0	1,01,376	7,17,001
2020-21 (P)	198.1	62,711	4,62,996

7. Self-sufficiency in petroleum products (Million Metric Tonnes)

Particulars		2019-20	2020-21 (P)	July		April-July	
				2020-21 (P)	2021-22 (P)	2020-21 (P)	2021-22 (P)
1	Indigenous crude oil processing	29.3	28.0	2.3	2.3	9.3	8.8
2	Products from indigenous crude (93.3% of crude oil processed)	27.3	26.1	2.2	2.2	8.7	8.2
3	Products from fractionators (Including LPG and Gas)	4.8	4.2	0.4	0.4	1.4	1.4
4	Total production from indigenous crude & condensate (2 + 3)	32.1	30.3	2.6	2.5	10.1	9.5
5	Total domestic consumption	214.1	194.6	15.6	16.8	56.4	65.3
% Self-sufficiency (4 / 5)		15.0%	15.6%	16.5%	15.1%	17.9%	14.6%

8. Refineries: Installed capacity and crude oil processing (MMTPA / MMT)

Company	Refinery	Installed capacity (1.8.2021) MMTPA	Crude oil processing (MMT)							
			2019-20	2020-21 (P)	July			April-July		
					2020-21 (P)	2021-22 (Target)	2021-22 (P)	2020-21 (P)	2021-22 (Target)	2021-22 (P)
IOCL	Barauni (1964)	6.0	6.5	5.5	0.4	0.3	0.6	1.5	1.7	2.0
	Koyali (1965)	13.7	13.1	11.6	1.1	1.2	1.1	3.5	4.9	4.2
	Haldia (1975)	8.0	6.5	6.8	0.6	0.7	0.6	1.7	2.8	2.6
	Mathura (1982)	8.0	8.9	8.9	0.8	0.8	0.7	2.8	3.0	2.9
	Panipat (1998)	15.0	15.0	13.2	1.1	1.3	1.3	3.7	5.3	5.0
	Guwahati (1962)	1.0	0.9	0.8	0.09	0.1	0.0	0.17	0.1	0.1
	Digboi (1901)	0.65	0.7	0.6	0.05	0.03	0.06	0.2	0.2	0.2
	Bongaigaon(1979)	2.35	2.0	2.5	0.2	0.2	0.2	0.8	0.9	0.9
	Paradip (2016)	15.0	15.8	12.5	1.0	1.3	1.1	3.9	5.3	4.5
	IOCL-TOTAL	69.7	69.4	62.4	5.4	6.0	5.7	18.3	24.1	22.4
CPCL	Manali (1969)	10.5	10.2	8.2	0.7	0.9	0.8	2.1	2.9	2.9
	CBR (1993)	1.0	0.0	0.0	0.0	0.0	0.0	0.0	0.0	0.0
	CPCL-TOTAL	11.5	10.2	8.2	0.7	0.9	0.8	2.1	2.9	2.9
BPCL	Mumbai (1955)	12.0	15.0	12.9	1.1	1.3	1.3	3.7	5.0	4.7
	Kochi (1966)	15.5	16.5	13.3	0.8	1.4	1.1	3.3	5.6	4.4
BORL	Bina (2011)	7.8	7.9	6.2	0.4	0.6	0.6	1.6	2.3	2.2
NRL	Numaligarh (1999)	3.0	2.4	2.7	0.2	0.2	0.2	0.8	0.9	0.9
	BPCL-TOTAL	38.3	41.8	35.1	2.6	3.5	3.2	9.4	13.7	12.1

Company	Refinery	Installed capacity (1.8.2021) (MMTPA)	Crude oil processing (MMT)							
			2019-20	2020-21 (P)	July			Apr-July		
					2020-21 (P)	2021-22 (Target)	2021-22 (P)	2020-21 (P)	2021-22 (Target)	2021-22 (P)
ONGC	Tatipaka (2001)	0.066	0.087	0.081	0.007	0.006	0.003	0.023	0.019	0.023
MRPL	Mangalore (1996)	15.0	14.0	11.5	0.8	1.4	1.1	2.6	4.6	4.2
	ONGC-TOTAL	15.1	14.0	11.6	0.8	1.4	1.1	2.7	4.6	4.2
HPCL	Mumbai (1954)	7.5	8.1	7.4	0.6	0.7	0.3	2.4	1.3	0.8
	Visakh (1957)	8.3	9.1	9.1	0.7	0.8	0.5	3.0	3.3	2.5
HMEL	Bathinda (2012)	11.3	12.2	10.1	1.0	0.9	1.1	3.1	3.7	4.3
	HPCL- TOTAL	27.1	29.4	26.5	2.4	2.5	1.9	8.4	8.3	7.6
RIL	Jamnagar (DTA) (1999)	33.0	33.0	34.1	2.8	2.8	2.7	11.0	11.0	11.0
	Jamnagar (SEZ) (2008)	35.2	35.9	26.8	1.5	1.5	2.3	8.6	8.6	9.7
NEL	Vadinar (2006)	20.0	20.6	17.1	1.6	1.6	1.7	5.9	5.9	6.7
All India (MMT)		249.9	254.4	221.8	17.7	20.2	19.4	66.3	79.1	76.6
All India (Million Bbl/Day)		5.02	5.09	4.45	4.18		4.58	3.98		4.60

Note: Provisional Targets; Some sub-totals/ totals may not add up due to rounding off at individual levels.

9. Major crude oil and product pipeline network (as on 01.08.2021)

Details		ONGC	OIL	Cairn	HMEL	IOCL	BPCL	HPCL	Others*	Total
Crude Oil	Length (KM)	1,283	1,193	688	1,017	5,301	937			10,419
	Cap (MMTPA)	60.6	9.0	10.7	11.3	48.6	7.8			147.9
Products	Length (KM)		654			9,400	2,241	3,775	2,395	18,465
	Cap (MMTPA)		1.7			47.5	19.5	34.1	9.4	112.2

*Others include GAIL and Petronet India. HPCL and BPCL lubes pipeline included in products pipeline data

OIL & GAS MAP OF INDIA



LEGENDS

Refineries



Refineries (Capacity in MMTPA)

Producing Fields

Major Producing Fields

LNG Terminals

● Dabhol, Dahej, Hazira, Kochi, Mundra, Ennore
 ★ (Upcoming Terminals) Dhamra, Jafrabad, Jaigarh, Chhara

LEGENDS

Pipelines Network

- Crude Oil Pipeline
- Ongoing Crude Oil Pipeline
- Product Pipeline
- Ongoing Product Pipeline
- LPG Pipeline
- Ongoing LPG Pipeline
- Gas Pipeline
- Ongoing Gas Pipeline

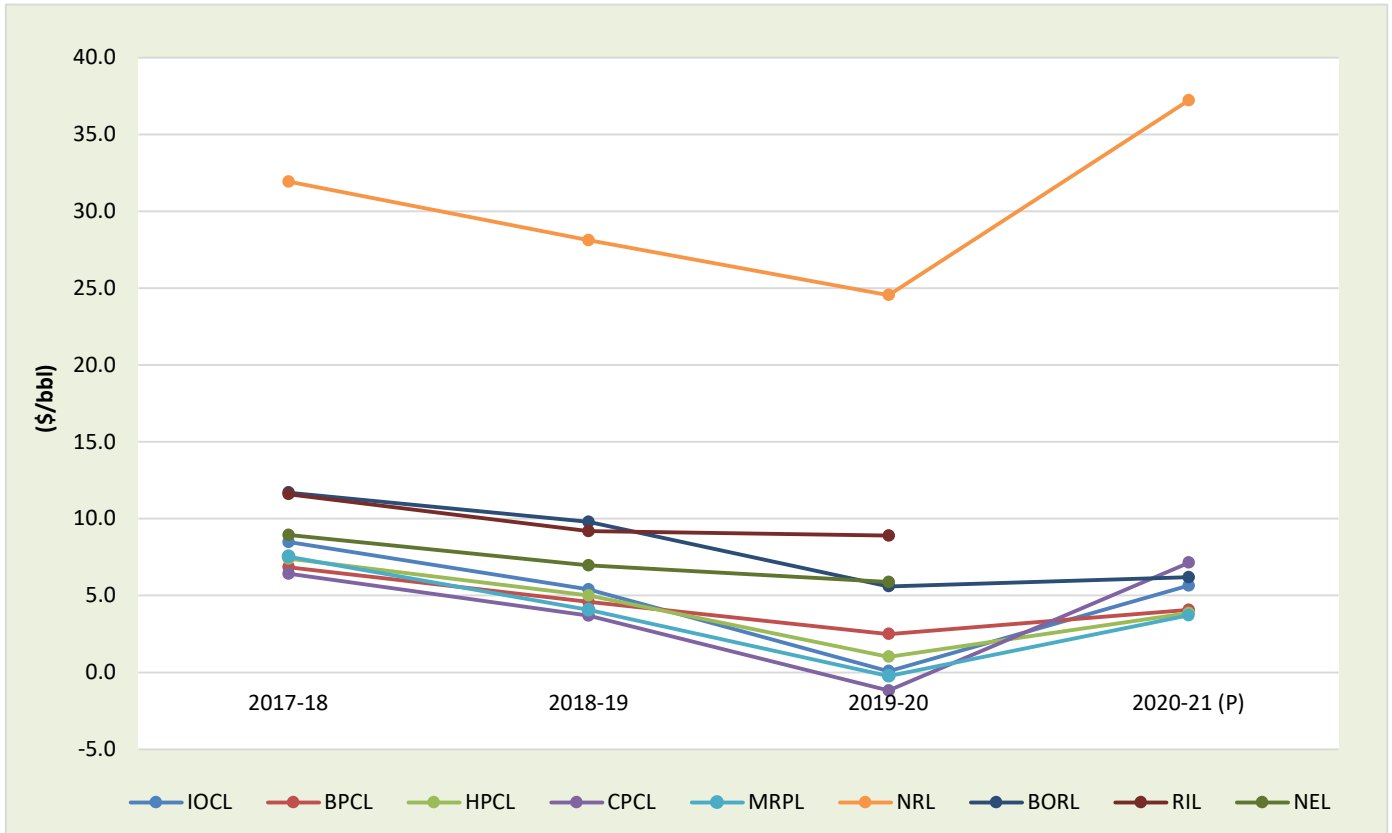


10. Gross Refining Margins (GRM) of refineries (\$/bbl)

Company	2017-18	2018-19	2019-20	2020-21 (P)
IOCL	8.49	5.41	0.08	5.64
BPCL	6.85	4.58	2.50	4.06
HPCL	7.40	5.01	1.02	3.86
CPCL	6.42	3.70	-1.18	7.14
MRPL	7.54	4.06	-0.23	3.71
NRL	31.92	28.11	24.55	37.23
BORL	11.70	9.80	5.60	6.20
RIL	11.60	9.20	8.90	*
NEL [@]	8.95	6.97	5.88	*

*Not available; [@]Nayara Energy Limited (formerly Essar Oil Limited)

Gross Refining Margins (GRM) of refineries (\$/bbl)





PART-C

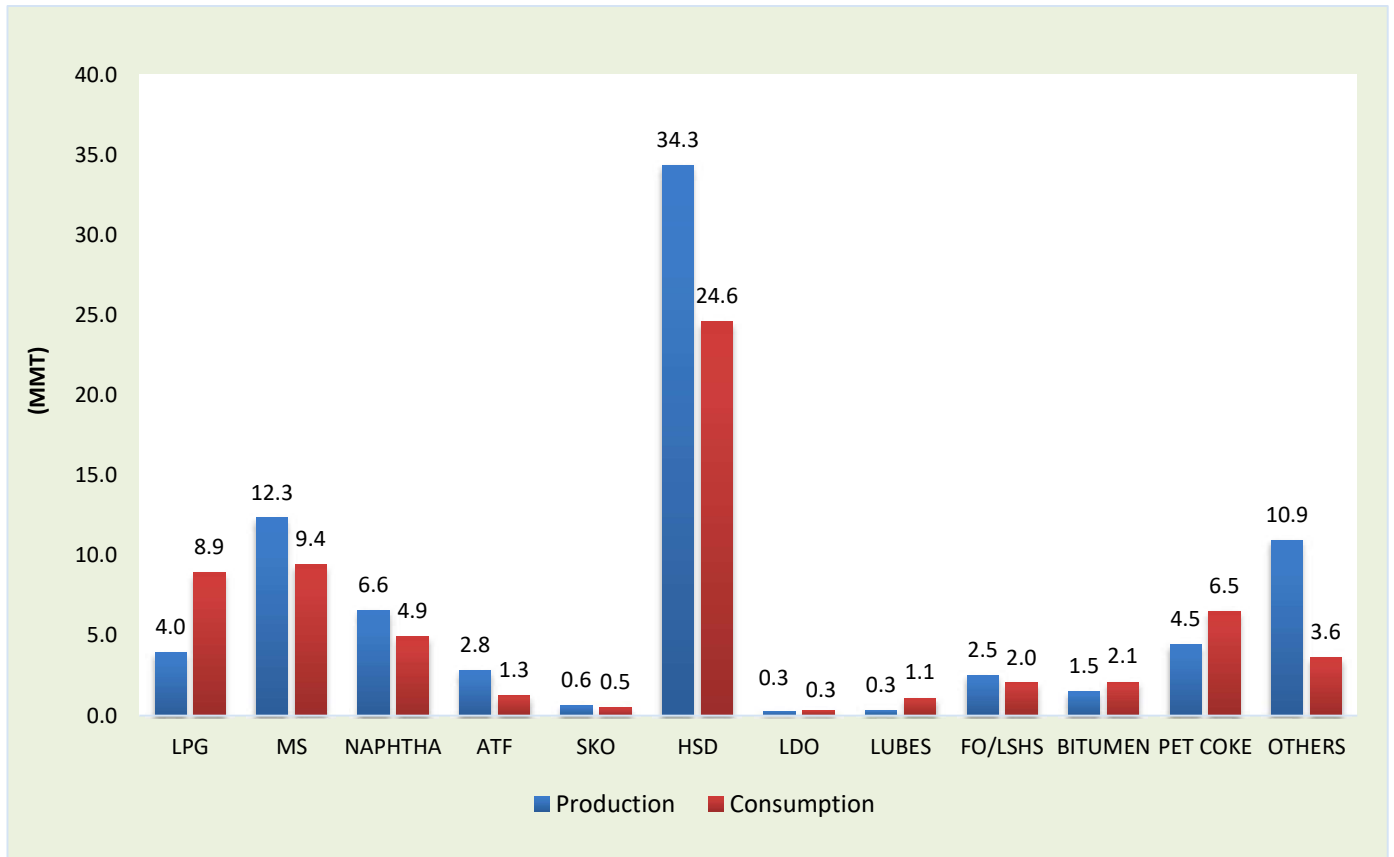
Consumption

11. Production and consumption of petroleum products (Million Metric Tonnes)

Products	2019-20		2020-21 (P)		July 2020 (P)		July 2021 (P)		Apr-Jul 2020 (P)		Apr-Jul 2021 (P)	
	Prod	Cons	Prod	Cons	Prod	Cons	Prod	Cons	Prod	Cons	Prod	Cons
LPG	12.8	26.3	12.1	27.6	0.9	2.3	1.0	2.4	3.8	8.7	4.0	8.9
MS	38.6	30.0	35.8	28.0	2.9	2.3	3.2	2.6	10.2	7.3	12.3	9.4
NAPHTHA	20.6	14.3	19.4	14.3	1.5	1.3	1.7	1.2	5.9	4.3	6.6	4.9
ATF	15.2	8.0	7.1	3.7	0.5	0.2	0.6	0.3	1.7	0.6	2.8	1.3
SKO	3.2	2.4	2.4	1.8	0.3	0.2	0.2	0.1	0.9	0.6	0.6	0.5
HSD	111.1	82.6	100.4	72.7	8.5	5.5	8.9	6.1	30.6	20.6	34.3	24.6
LDO	0.6	0.6	0.7	0.8	0.07	0.1	0.05	0.1	0.2	0.2	0.3	0.3
LUBES	0.9	3.8	1.1	3.5	0.1	0.3	0.1	0.3	0.3	0.9	0.3	1.1
FO/LSHS	9.3	6.3	7.4	6.0	0.6	0.5	0.7	0.5	2.6	1.8	2.5	2.0
BITUMEN	4.9	6.7	4.9	7.1	0.3	0.4	0.3	0.4	1.2	1.9	1.5	2.1
PET COKE	14.6	21.7	12.0	18.3	1.0	1.6	1.2	1.7	4.0	6.3	4.5	6.5
OTHERS	31.0	11.4	30.2	10.8	2.7	1.0	2.8	1.0	10.0	3.1	10.9	3.6
ALL INDIA	262.9	214.1	233.5	194.6	19.4	15.6	20.7	16.8	71.4	56.4	80.7	65.3
Growth (%)	0.2%	0.4%	-11.2%	-9.1%	-13.9%	-13.3%	6.7%	7.9%	-17.1%	-23.0%	13.1%	15.8%

Note: Prod - Production; Cons - Consumption

Petroleum Products: April-July 2021 (P) (MMT)



12. Kerosene allocation vs upliftment (Kilo Litres)

Product	2018-19		2019-20		2020-21 (P)		2021-22 (P)*	
	Allocation	Upliftment	Allocation	Upliftment	Allocation	Upliftment	Allocation	Upliftment
PDS Kerosene	44,32,994	41,52,112	31,21,328	27,93,217	23,15,008	20,38,790	8,91,408	5,69,352

* Allocation is for H1, 2021-22 and upliftment is for Apr-Jul 2021.

13. Ethanol blending programme

Particulars	Ethanol Supply Year *				
	2017-18	2018-19	2019-20	2020-21 (P)	
				Jul-21	Dec'20-Jul'21
Ethanol received by PSU OMCs under EBP Program (in Cr. Litrs)	150.5	188.6	173.0	29.7	209.8
Average Percentage of Blending Sales (EBP%)	4.2%	5.0%	5.0%	9.1%	8.0%

*Ethanol Supply Year : Ethanol supplies take place between 1st December of the present year to 30th November of the following year.

Note: With effect from 01.04.2019, EBP Programme has been extended to whole of India except UTs of Andaman and Nicobar Islands and Lakshadweep.

14. Industry marketing infrastructure (as on 01.08.2021) (Provisional)

Particulars	IOCL	BPCL	HPCL	RIL/RBML*	NEL	SHELL	Others	Total
POL Terminal/ Depots (Nos.) [§]	118	80	80	18	3	-	6	305
Aviation Fuel Stations (Nos.) [@]	121	61	46	31	-	-	1	260
Retail Outlets (total) (Nos.) [^]	32,480	18,903	18,897	1,426	6,204	280	24	78,214
out of which Rural ROs	10,127	4,378	4,625	127	1,973	63	3	21,296
SKO/LDO agencies (Nos.)	3,871	930	1,638	-	-	-	-	6,439
LPG Distributors (total) (Nos.) (PSUs only)	12,755	6,173	6,197	-	-	-	-	25,125
LPG Bottling plants (Nos.) (PSUs only) [#]	92	53	51	-	-	-	3	199
LPG Bottling capacity (TMTPA) (PSUs only) ^{&}	10,304	4,890	5,912	-	-	-	203	21,309
LPG active domestic consumers (Nos. crore) (PSUs only)	13.6	7.5	8.0	-	-	-	-	29.1

[§](Others=4 MRPL & 2 NRL); [@](Others=ShellMRPL); [^](Others=MRPL); [#](Others=NRL-1, OIL-1, CPCL-1); [&](Others=NRL-60, OIL-23, CPCL-120); *RBML- Reliance BP Mobility Limited



पहल
... एक नई दिशा
प्रत्यक्ष हस्तान्तरित लाभ

अपना धन पाओ,
जन धन बचाओ.



#GiveltUp
Feel the Joy of Giving



उज्ज्वला
www.pga.sarvika.in

PART-D

LPG

15. LPG consumption (Thousand Metric Tonne)

LPG category	2019-20	2020-21 (P)	July			April-July		
			2020-21 (P)	2021-22 (P)	Gr (%)	2020-21 (P)	2021-22 (P)	Gr (%)
1. PSU Sales :								
LPG-Packed Domestic	23,076.0	25,117.1	2,096.5	2,115.9	0.9	8,269.1	8,121.6	-1.8
LPG-Packed Non-Domestic	2,614.4	1,884.9	120.2	195.7	62.7	347.1	592.2	70.6
LPG-Bulk	263.5	355.5	26.3	33.1	26.0	73.2	117.6	60.7
Auto LPG	171.9	118.3	8.0	11.6	44.3	22.4	33.6	50.2
Sub-Total (PSU Sales)	26,125.7	27,475.7	2,251.0	2,356.2	4.7	8,711.7	8,864.9	1.8
2. Direct Private Imports*	204.0	114.8	11.9	11.9	0.0	19.9	47.4	138.4
Total (1+2)	26,329.8	27,590.5	2,262.9	2,368.1	4.6	8,731.6	8,912.4	2.1

*Jul 2020 -Jul 2021 DGCIS data prorated

16. LPG marketing at a glance

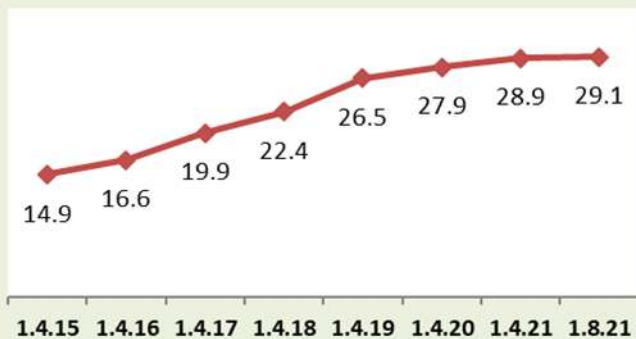
Particulars (As on 1st of April)	Unit	2010	2011	2012	2013	2014	2015	2016	2017	2018	2019	2020	2021 (P)	1.8.2021 (P)
		LPG Active Domestic Customers	(Lakh) Growth						1486	1663	1988	2243	2654	2787
LPG Coverage (Estimated)	(Percent) Growth						56.2	61.9	72.8	80.9	94.3	97.5	99.8	99.9
PMUY Beneficiaries	(Lakh) Growth								200	356	719	802	800.4	799.9
LPG Distributors	(No.) Growth	9686	10541	11489	12610	13896	15930	17916	18786	20146	23737	24670	25083	25125
Auto LPG Dispensing Stations	(No.) Growth	536	604	652	667	678	681	676	675	672	661	657	651	640
Bottling Plants	(No.) Growth	182	183	184	185	187	187	188	189	190	192	196	200	199

Source: PSU OMCs (IOCL, BPCL and HPCL)

1. Growth rates as on 1.8.2021 are w.r.t. figures as on 1.8.2020. All growth rates as on 1 April of any year are w.r.t. figures as on 1 April of previous year.

2. The methodology used for estimating LPG coverage by PSU OMC's is under review.

**Growth trend in active LPG domestic customers
(In Crore)**



Growth trend in LPG coverage



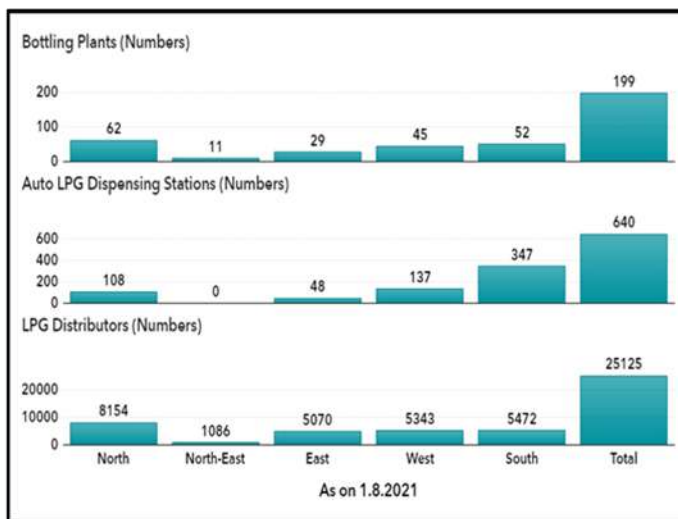
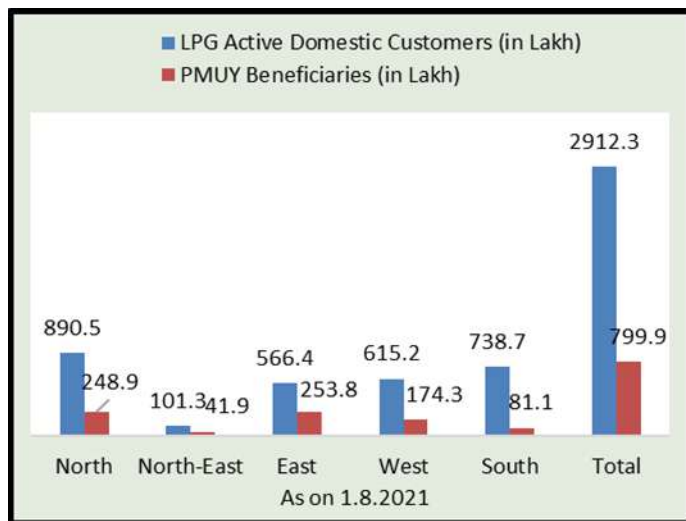
Growth trend in LPG distributors



17-Region-wise data on LPG marketing (As on 01.08.2021)

Particulars	North	North-East	East	West	South	Total
LPG Active Domestic Customers (in Lakh)	890.5	101.3	566.4	615.2	738.7	2912.3
LPG Coverage (Estimated) #	114.1%	93.0%	86.2%	90.4%	107.4%	99.9%
PMUY Beneficiaries (in Lakh)	248.9	41.9	253.8	174.3	81.1	799.9
LPG Distributors (Numbers)	8154	1086	5070	5343	5472	25125
Auto LPG Dispensing Stations (Numbers)	108	0	48	137	347	640
Bottling Plants* (Numbers)	62	11	29	45	52	199

*Includes Numaligarh BP, Duliajan BP and CPCL BP. # The methodology used by PSU OMCs for estimating LPG Coverage is under review.





PART-E

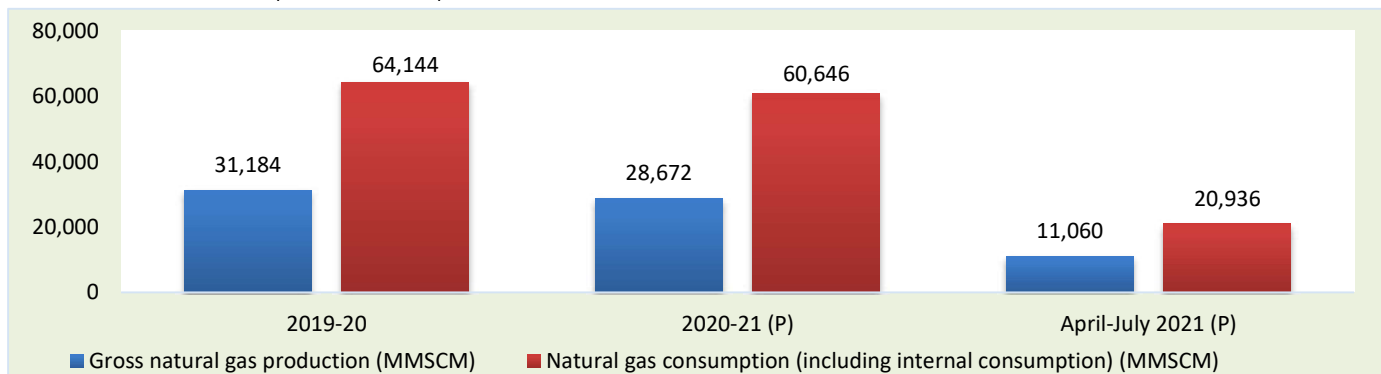
Natural Gas

18. Natural gas at a glance

(MMSCM)

Details	2019-20	2020-21 (P)	July			April-July		
			2020-21 (P)	2021-22 (Target)	2021-22 (P)	2020-21 (P)	2021-22 (Target)	2021-22 (P)
(a) Gross production	31,184	28,672	2,443	3,220	2,892	10,749	19,304	11,060
- ONGC	23,746	21,872	1,926	1,990	1,729	8,151	13,795	6,781
- Oil India Limited (OIL)	2,668	2,480	203	251	248	916	1,618	924
- Private / Joint Ventures (JVs)	4,770	4,321	315	979	915	1,682	3,891	3,356
(b) Net production (excluding flare gas and loss)	30,257	27,785	2,639		2,818	8,901		10,774
(c) LNG import [#]	33,887	32,861	2,971		2,528	9,969		10,161
(d) Total consumption including internal consumption (b+c)	64,144	60,646	5,610		5,346	18,870		20,936
(e) Total consumption (in BCM)	64.1	60.6	5.6		5.3	18.9		20.9
(f) Import dependency based on consumption (%), {c/d*100}	52.8	54.2	53.0		47.3	52.8		48.5

#Jul 2020-Jul 2021 DGCS data prorated; RIL data prorated



19. Coal Bed Methane (CBM) gas development in India

Prognosticated CBM resources	91.8	TCF
Established CBM resources	10.4	TCF
CBM Resources (33 Blocks)	62.8	TCF
Total available coal bearing areas (India)	32760	Sq. KM
Total available coal bearing areas with MoPNG/DGH	21659	Sq. KM
Area awarded	16613	Sq. KM
Blocks awarded (ST CBM Block awarded twice in CBM Round II and Round IV)	32	Nos.
Exploration initiated (Area considered if any boreholes were drilled in the awarded block)	10669.55	Sq. KM
Production of CBM gas	April-July 2021 (P)	229.72
Production of CBM gas	July 2021 (P)	57.63
		MMSCM
		MMSCM

20. Natural gas pipeline network as on 31.03.2021

Nature of pipeline		GAIL	GSPL	PIL	IOCL	AGCL	RGPL	GGL	DFPCL	ONGC	GIGL	GITL	Others*	Total
Operational	Length	8,242	2,265	1,459	132	105	312	73	42	24				12,653
	Capacity	167.2	43.0	85.0	20.0	2.4	3.5	5.1	0.7	6.0				337.3
Partially commissioned [#]	Length	8,071			1,431						2,590	365		12,457
	Capacity	121.0												-
Total operational length		16,313	2,265	1,459	1,563	105	312	73	42	24	2,590	365	0	25,110
Under construction	Length	2,445									90	1,446	3,550	7,531
	Capacity	23.2											149.0	-
Total length		18,758	2,265	1,459	1,563	105	312	73	42	24	2,680	1,811	3,550	32,641

Source: PNGRB; Length in KMs ; Authorized Capacity in MMSCMD; *Others-APGDC, HEPL, IGGL, IMC, Consortium of H-Energy

21. Existing LNG terminals

Location	Promoters	Capacity as on 01.08.2021	% Capacity utilisation (Apr-Jun 2021)
Dahej	Petronet LNG Ltd (PLL)	17.5 MMTPA	86.0
Hazira	Shell Energy India Pvt. Ltd.	5 MMTPA	63.1
Dabhol	Konkan LNG Limited	*5 MMTPA	68.4
Kochi	Petronet LNG Ltd (PLL)	5 MMTPA	23.2
Ennore	Indian Oil LNG Pvt Ltd	5 MMTPA	16.0
Mundra	GSPC LNG Limited	5 MMTPA	24.0
Total Capacity		42.5 MMTPA	

* To increase to 5 MMTPA with breakwater. Only HP stream of capacity of 2.9 MMTPA is commissioned

22. Status of PNG connections and CNG stations across India (Nos.), as on 30.06.2021 (P)

State/Union Territory	Geographical Area/CGD Networks	Authorized CGD Entity	CNG stations	PNG connections		
				Domestic	Commercial	Industrial
Andhra Pradesh	Kakinada	Bhagyanagar Gas Limited	12	59,183	128	2
	Vijaywada	Bhagyanagar Gas Limited	30	44,361	58	0
	West Godavari District	Godavari Gas Private Limited	13	51,064	12	1
	East Godavari District (EAAA)	Godavari Gas Private Limited	15	49,777	5	0
	Srikakulam, Visakhapatnam & Vizianagaram Districts	Indian Oil Corporation Limited	1	0	0	0
	Krishna District (EAAA)	Megha Engineering & Infrastructure Limited	15	11,580	94	15
Andhra Pradesh Total			86	2,15,965	297	18
Andhra Pradesh, Karnataka & Tamil Nadu	Chittoor, Kolar and Vellore Districts	AGP City Gas Private Limited	0	0	0	1
Andhra Pradesh, Karnataka & Tamil Nadu Total			0	0	0	1
Assam	Upper Assam	Assam Gas Company Limited	1	37,138	1,203	411
	Cachar, Hailakandi & Karimganj Districts	Purba Bharati Gas Private Limited	0	285	0	0
Assam Total			1	37,423	1,203	411
Bihar	Patna District	GAIL (India) Limited	9	32,407	11	0
	Aurangabad, Kaimur & Rohtas Districts	Indian Oil Corporation Limited	1	0	0	0
	Gaya & Nalanda Districts	Indian-Oil Adani Gas Private Limited	1	0	0	0
	Begusarai District	Think Gas Begusarai Private Limited	4	0	0	0
Bihar Total			15	32,407	11	0
Chandigarh (UT), Haryana, Punjab & Himachal Pradesh	Chandigarh	Indian-Oil Adani Gas Private Limited	19	1,11,901	43	12
Chandigarh (UT), Haryana, Punjab & Himachal Pradesh Total			19	1,11,901	43	12
Dadra & Nagar Haveli (UT)	UT of Dadra & Nagar Haveli	Gujarat Gas Limited	7	7,589	43	40
Dadra & Nagar Haveli (UT) Total			7	7,589	43	40
Daman & Diu (UT)	UT of Daman	Indian-Oil Adani Gas Private Limited	4	4,831	30	30
Daman & Diu (UT) Total			4	4,831	30	30
Daman and Diu & Gujarat	Diu & Gir Somnath Districts	IRM Energy Private Limited	9	1	1	0
Daman and Diu & Gujarat Total			9	1	1	0
Goa	North Goa District	Goa Natural Gas Private Limited	5	6,389	5	12
	South Goa District	Indian-Oil Adani Gas Private Limited	2	0	0	1
Goa Total			7	6,389	5	13
Gujarat	Ahmedabad City and Daskroi Area	Adani Gas Limited	72	4,28,723	2,893	849
	Vadodara	Adani Gas Limited	6	616	1	88
	Kheda District (EAAA) & Mahisagar District	Adani Gas Limited	14	0	0	0
	Surendranagar District (EAAA) & Morbi District (EAAA)	Adani Gas Limited	8	0	0	0
	Navsari District (EAAA), Surat District (EAAA), Tapi District (EAAA) & the Dangas District	Adani Gas Limited	6	0	0	0
	Porbandar District	Adani Gas Limited	5	0	0	0
	Barwala & Ranpur Talukas	Adani Gas Limited	3	0	0	0
	Anand area including Kanjari & Vadtal Villages (in Kheda District)	Charotar Gas Sahakari Mandali Limited	10	35,603	678	144
	Surat, Bharuch, Ankleshwar	Gujarat Gas Limited	111	6,91,313	9,219	1,020
	Rajkot	Gujarat Gas Limited	74	2,62,470	1,048	1,449
	Gandhinagar	Gujarat Gas Limited	16	1,28,249	541	29
	Valsad	Gujarat Gas Limited	25	1,11,795	372	692
	Navsari	Gujarat Gas Limited	23	1,06,165	262	53
	Nadiad	Gujarat Gas Limited	32	65,233	394	20
	Bhavnagar	Gujarat Gas Limited	27	38,790	202	67
	Anand District (EAAA)	Gujarat Gas Limited	30	38,023	343	18
	Hazira	Gujarat Gas Limited	1	36,609	132	17
	Surendranagar	Gujarat Gas Limited	19	25,433	241	361
	Jamnagar	Gujarat Gas Limited	21	24,363	176	110
	Panchmahal District	Gujarat Gas Limited	26	17,139	95	82

State/Union Territory	Geographical Area/CGD Networks	Authorized CGD Entity	CNG stations	PNG connections			
				Domestic	Commercial	Industrial	
	Amreli District	Gujarat Gas Limited	13	5,510	32	1	
	Dahod District	Gujarat Gas Limited	13	3,045	11	21	
	Kutch (West)	Gujarat Gas Limited	12	2,005	28	2	
	Dahej Vagra Taluka	Gujarat Gas Limited	4	1,139	14	33	
	Narmada (Rajpipla) District	Gujarat Gas Limited	5	264	0	0	
	Ahmedabad District (EAAA)	Gujarat Gas Limited	8	0	0	0	
	Ahmedabad City (Only for CNG)	Hindustan Petroleum Corporation Limited	22	-	-	-	
	Banaskantha District	IRM Energy Private Limited	31	26,050	113	11	
	Gandhinagar Mehsana Sabarkantha	Sabarmati Gas Limited	115	2,10,517	931	372	
	Patan District	Sabarmati Gas Limited	22	13,733	33	6	
	Junagadh District	Torrent Gas Private Limited	12	0	0	0	
	Vadodara	Vadodara Gas Limited	21	1,82,918	2,643	9	
	Gujarat Total			807	24,55,705	20,402	5,454
	Haryana	Faridabad	Adani Gas Limited	21	63,510	220	399
Nuh and Palwal Distircts		Adani Gas Limited	13	1,476	4	37	
Bhiwani, Charkhi Dadri & Mahendragarh Districts		Adani Gas Limited	13	0	0	0	
Yamunanagar District		Bharat Petroleum Corporation Limited	4	6,150	0	0	
Rohtak District		Bharat Petroleum Corporation Limited	3	1,441	0	0	
Sonipat		GAIL Gas Limited	18	26,331	42	175	
Jhajjar District		Haryana City Gas (KCE) Private Limited	3	24	0	0	
Gurugram		Haryana City Gas Distribution Limited	29	22,889	143	186	
Hisar District		HCG (KCE) Private Limited	2	0	0	0	
Sonipat District (EAAA) & Jind District		Hindustan Petroleum Corporation Limited	10	5,250	0	0	
Ambala & Kurukshetra Districts		HPOIL Gas Private Limited	8	6,775	0	0	
Panipat District		Indian-Oil Adani Gas Private Limited	11	16,939	12	29	
Kaithal District		Indraprastha Gas Limited	5	11,079	0	0	
Rewari District		Indraprastha Gas Limited	15	10,638	55	148	
Karnal District		Indraprastha Gas Limited	10	10,083	5	15	
Gurugram		Indraprastha Gas Limited	14	15,868	87	24	
Haryana Total			179	1,98,453	568	1,013	
Haryana & Himachal Pradesh	Panchkula District (EAAA), Sirmaur, Shimla & Solan (EAAA) Districts	Indian-Oil Adani Gas Private Limited	5	0	0	0	
Haryana & Himachal Pradesh Total			5	0	0	0	
Haryana & Punjab	Sirsa, Fatehabad and Mansa (Punjab) Districts	Gujarat Gas Limited	9	0	0	0	
Haryana & Punjab Total			9	0	0	0	
Himachal Pradesh	Bilaspur, Hamirpur & Una Districts	Bharat Gas Resources Limited	1	1,000	0	0	
Himachal Pradesh Total			1	1,000	0	0	
Jharkhand	Ranchi District	GAIL (India) Limited	4	18,901	0	0	
	East Singhbhum District	GAIL (India) Limited	4	15,951	0	0	
	Giridih & Dhanbad Districts	GAIL Gas Limited	7	6,349	0	0	
	Seraikela-Kharsawan District	GAIL Gas Limited	5	3,247	0	0	
	Bokaro, Hazaribagh & Ramgarh Districts	Indian Oil Corporation Limited	7	0	0	0	
	Jharkhand Total			27	44,448	0	0
Karnataka	Udupi District	Adani Gas Limited	2	0	0	0	
	Mysuru, Mandya and Chamarajanagar Districts	AGP City Gas Private Limited	2	0	0	0	
	Ballari & Gadag Districts	Bharat Gas Resources Limited	4	0	0	0	
	Bidar District	Bharat Gas Resources Limited	1	0	0	0	
	Bengaluru Rural and Urban Districts	GAIL Gas Limited	34	2,02,999	250	142	
	Dakshina Kannada District*	GAIL Gas Limited	13	9,235	0	0	
	Dharwad District	Indian-Oil Adani Gas Private Limited	5	14,070	5	2	
	Ramanagara District	Maharashtra Natural Gas Limited	7	1,269	0	1	
	Tumkur District	Megha Engineering & Infrastructure Limited	0	17,446	100	36	

State/Union Territory	Geographical Area/CGD Networks	Authorized CGD Entity	CNG stations	PNG connections		
				Domestic	Commercial	Industrial
	Belgaum District	Megha Engineering & Infrastructure Limited	2	14,231	65	23
	Chitradurga & Davanagere Districts	Unison Enviro Private Limited	5	0	0	0
Karnataka Total			75	2,59,250	420	204
Kerala	Alapuzha, Kollam and Thiruvananthapuram Districts	AGP City Gas Private Limited	2	0	0	3
	Ernakulam District	Indian-Oil Adani Gas Private Limited	10	42,432	14	9
	Palakkad & Thrissur Districts	Indian-Oil Adani Gas Private Limited	11	0	0	0
	Kozhikode & Wayanad Districts	Indian-Oil Adani Gas Private Limited	3	0	0	0
	Malappuram District	Indian-Oil Adani Gas Private Limited	3	0	0	0
Kerala Total			29	42,432	14	12
Kerala & Puducherry	Kannur, Kasaragod & Mahe Districts	Indian-Oil Adani Gas Private Limited	2	0	0	0
Kerala & Puducherry Total			2	0	0	0
Madhya Pradesh	Indore (including Ujjain City)	Aavantika Gas Limited	47	63,004	95	236
	Gwalior	Aavantika Gas Limited	21	24,345	44	8
	Satna & Shandol Districts	Bharat Gas Resources Limited	2	1,580	0	0
	Dewas	GAIL Gas Limited	3	13,447	28	42
	Raisen, Shajapur and Sehore Districts	GAIL Gas Limited	4	44	0	0
	Ujjain (EAAA) District, Dewas (EAAA) District and Indore (EAAA) District	Gujarat Gas Limited	6	0	0	0
	Rewa District	Indian Oil Corporation Limited	3	810	0	0
	Guna District	Indian Oil Corporation Limited	1	506	0	0
	Morena District	Indian Oil Corporation Limited	1	0	0	0
	Dhar District	Naveriya Gas Private Limited	2	657	14	0
	Gwalior (EAAA) District and Sheopur District	Rajasthan State Gas Limited	2	0	0	0
	Bhopal & Rajgarh Districts	Think Gas Bhopal Private Limited	16	16	1	1
Shivpuri District	Think Gas Bhopal Private Limited	1	0	0	0	
Madhya Pradesh Total			109	1,04,409	182	287
Madhya Pradesh and Rajasthan	Jhabua, Banswara, Ratlam and Dungarpur Districts	Gujarat Gas Limited	13	0	0	0
Madhya Pradesh and Rajasthan Total			13	0	0	0
Madhya Pradesh and Uttar Pradesh	Jhansi (EAAA) District, Bhind, Jalaun, Lalitpur and Datia Districts	Adani Gas Limited	6	0	0	0
Madhya Pradesh and Uttar Pradesh Total			6	0	0	0
Maharashtra	Sangli & Satara Districts	Bharat Gas Resources Limited	9	1,262	0	0
	Ahmednagar & Aurangabad Districts	Bharat Gas Resources Limited	15	109	0	0
	Palghar District & Thane Rural	Gujarat Gas Limited	17	476	14	63
	Kolhapur District	HPOIL Gas Private Limited	7	4,097	0	0
	Mumbai & Greater Mumbai	Mahanagar Gas Limited	143	9,49,647	3,165	15
	Thane urban and adjoining Municipalities	Mahanagar Gas Limited	114	6,41,282	946	70
	Raigarh District (EAAA)	Mahanagar Gas Limited	19	41,072	0	1
	Pune City including Pimpri - Chichwad & adjoining contiguous areas	Maharashtra Natural Gas Limited	87	3,63,324	383	226
	Hiniewadi, Chakan, Talegaon	Maharashtra Natural Gas Limited	6	1,794	0	0
	Sindhudurg District	Maharashtra Natural Gas Limited	29	5,848	1	5
	Pune District (EAAA)	Torrent Gas Pune Limited	15	3,685	1	56
	Ratnagiri District	Unison Enviro Private Limited	4	0	0	0
Latur & Osmanabad Districts	Unison Enviro Private Limited	4	0	0	0	
Maharashtra Total			465	20,12,596	4,510	436
Maharashtra & Gujarat	Valsad (EAAA), Dhule & Nashik Districts	Maharashtra Natural Gas Limited	32	28,788	0	0
Maharashtra & Gujarat Total			32	28,788	0	0
National Capital Territory of Delhi (UT)	National Capital Territory of Delhi	Indraprastha Gas Limited	437	10,71,805	2,736	1,604
National Capital Territory of Delhi (UT) Total			437	10,71,805	2,736	1,604
Orissa	Balasure, Bhadrak & Mayurbhanj Districts	Adani Gas Limited	4	0	0	0
	Jajpur & Kendujhar Districts	Bharat Gas Resources Limited	0	89	0	0
	Khordha District	GAIL (India) Limited	10	18,155	0	0

State/Union Territory	Geographical Area/CGD Networks	Authorized CGD Entity	CNG stations	PNG connections		
				Domestic	Commercial	Industrial
Odisha	Cuttack District	GAIL (India) Limited	6	8,800	0	0
	Sundargarh & Jharsuguda Districts	GAIL Gas Limited	2	1,955	0	0
	Ganjam, Nayagarh & Puri Districts	GAIL Gas Limited	2	1,639	0	0
	Odisha Total		24	30,638	0	0
Puducherry & Tamil Nadu	Karaikal & Nagapattinam Districts	Torrent Gas Private Limited	3	0	0	0
	Puducherry & Tamil Nadu Total		3	0	0	0
Punjab	Amritsar District	Gujarat Gas Limited	14	4,419	56	4
	Bhatinda District	Gujarat Gas Limited	6	1,660	8	0
	Fatehgarh Sahib District	IRM Energy Private Limited	7	1,457	20	63
	Ferozepur, Faridkot and Sri Muktsar Sahib Districts	Gujarat Gas Limited	4	0	0	0
	Hoshiarpur and Gurdaspur Districts	Gujarat Gas Limited	16	0	0	0
	Jalandhar	Jay Madhok Energy Private Limited led Consortium	3	0	0	0
	Jalandhar District (EAAA), Kapurthala & SBS Nagar Districts	Think Gas Ludhiana Private Limited	10	0	0	0
	Ludhiana	Jay Madhok Energy Private Limited led Consortium	3	0	0	0
	Ludhiana District (EAAA), Barnala & Moga Districts	Think Gas Ludhiana Private Limited	12	281	0	1
	Rupnagar District	Bharat Petroleum Corporation Limited	6	4,950	0	0
SAS Nagar District (EAAA), Patiala & Sangrur Districts	Torrent Gas Private Limited	18	63	1	0	
Punjab Total		99	12,830	85	68	
Rajasthan	Ajmer, Pali and Rajsamand Districts	Indraprastha Gas Limited	8	44,838	0	0
	Barmer, Jaisalmer & Jodhpur Districts	AGP CGD India Private Limited	7	72	1	3
	Bhilwara & Bundi Districts	Adani Gas Limited	6	0	0	0
	Bhiwadi (in Alwar District)	Haryana City Gas Distribution (Bhiwadi) Limited	1	2,291	0	59
	Chittorgarh (Other than Rawatbhata Taluka) & Udaipur Districts	Adani Gas Limited	15	0	0	0
	CNG (DBS) NOC	Rajasthan State Gas Limited	2	-	-	-
	Dholpur District	Dholpur CGD Private Limited	5	0	0	0
	Jalore and Sirohi Districts	Gujarat Gas Limited	12	0	0	0
	Kota	Rajasthan State Gas Limited	7	17,567	17	15
	Kota District (EAAA), Baran & Chittorgarh (Only Rawatbhata Taluka) Districts	Torrent Gas Private Limited	11	5	0	0
Rajasthan Total		74	64,773	18	77	
Tamil Nadu	Coimbatore District	Indian Oil Corporation Limited	3	0	0	0
	Cuddalore, Nagapattinam & Tiruvarur Districts	Adani Gas Limited	9	0	0	0
	Ramanathapuram District	AGP CGD India Private Limited	2	0	0	0
	Tiruppur District	Adani Gas Limited	15	0	0	0
Tamil Nadu Total		29	0	0	0	
Telangana	Hyderabad	Bhagyanagar Gas Limited	83	1,50,036	38	48
	Medak, Siddipet & Sangareddy Districts	Torrent Gas Private Limited	14	0	0	4
	Nalgonda Suryapet & Yadadri Bhuvanagiri Districts	Megha Engineering & Infrastructure Limited	1	603	0	1
Telangana Total		98	1,50,639	38	53	
Tripura	Agartala	Tripura Natural Gas Company Limited	6	42,805	493	62
	Gomati District	Tripura Natural Gas Company Limited	5	0	0	0
	West Tripura (EAAA) District	Tripura Natural Gas Company Limited	6	7,050	0	0
	Tripura Total		17	49,855	493	62
	Agra	Green Gas Limited	25	79,094	61	17
	Allahabad	Indian-Oil Adani Gas Private Limited	6	36,233	30	7
	Allahabad District (EAAA), Bhadohi & Kaushambi Districts	Indian-Oil Adani Gas Private Limited	9	372	0	0
	Amethi, Pratapgarh & Raebareilly Districts	Bharat Gas Resources Limited	6	1,824	0	0
	Auraiya, Kanpur Dehat & Etawah Districts	Torrent Gas Private Limited	20	505	0	0
	Azamgarh, Mau and Ballia Districts	Torrent Gas Private Limited	9	0	0	0
	Bagpat District	Bagpat Green Energy Private Limited	3	0	0	0
	Bareilly	Central UP Gas Limited	17	35,894	129	23
	Bareilly (EAAA) District, Pilibhit and Rampur Districts	Hindustan Petroleum Corporation Limited	8	0	0	0

State/Union Territory	Geographical Area/CGD Networks	Authorized CGD Entity	CNG stations	PNG connections		
				Domestic	Commercial	Industrial
	Basti and Ambedkarnagar Districts	Torrent Gas Private Limited	12	0	0	0
	Bulandshahr (part) District	Indian-Oil Adani Gas Private Limited	5	0	0	0
	Bulandshahr District (EAAA), Aligarh & Hathras Districts	Indian-Oil Adani Gas Private Limited	8	0	0	0
	Faizabad & Sultanpur Districts	Green Gas Limited	2	841	0	0
	Farrukhabad, Etah and Hardoi Districts	Hindustan Petroleum Corporation Limited	10	0	0	0
	Gautam Budh Nagar District	Indraprastha Gas Limited	51	2,61,623	617	921
	Ghaziabad & Hapur Districts	Indraprastha Gas Limited	56	2,47,470	308	404
	Gonda and Barabanki Districts	Torrent Gas Private Limited	12	0	0	0
	Gorakhpur, Sant Kabir Nagar & Kushinagar Districts	Torrent Gas Private Limited	17	64	0	0
	Jaunpur and Ghazipur Districts	Indian-Oil Adani Gas Private Limited	3	0	0	0
	Jhansi	Central UP Gas Limited	5	1,378	0	0
	Kanpur	Central UP Gas Limited	34	86,435	233	83
	Kanpur (EAAA) District, Fatehpur and Hamirpur Districts	Indraprastha Gas Limited	7	14,708	0	0
	Khurja	Adani Gas Limited	6	7,665	7	232
	Lucknow	Green Gas Limited	37	69,870	57	11
	Mainpuri and Kannauj Districts	Hindustan Petroleum Corporation Limited	5	0	0	0
	Mathura	Sanwariya Gas Limited	11	4,601	39	78
	Meerut	GAIL Gas Limited	17	50,319	44	63
	Meerut District (EAAA), Muzaffarnagar & Shamli Districts	Indraprastha Gas Limited	10	16,673	6	0
	Mirzapur, Chandauli and Sonbhadra Districts	GAIL Gas Limited	7	2,177	0	0
	Moradabad	Torrent Gas Moradabad Limited	6	9,420	13	89
	Moradabad (EAAA) District	Torrent Gas Private Limited	15	752	0	2
	Saharanpur District	Bharat Petroleum Corporation Limited	6	9,024	0	0
	Shahjahanpur and Budaun Districts	Hindustan Petroleum Corporation Limited	6	0	0	0
	Unnao (EAAA) District	Green Gas Limited	1	0	0	0
	Varanasi District	GAIL (India) Limited	11	37,371	31	2
	Uttar Pradesh Total		463	9,74,313	1,575	1,932
Uttar Pradesh & Rajasthan	Firozabad (Taj Trapezium Zone)	GAIL Gas Limited	31	18,063	1	341
	Uttar Pradesh & Rajasthan Total		31	18,063	1	341
Uttar Pradesh and Uttarakhand	Bijnor and Nainital Districts	Hindustan Petroleum Corporation Limited	7	0	0	0
	Uttar Pradesh and Uttarakhand Total		7	0	0	0
Uttarakhand	Dehradun District	GAIL Gas Limited	6	10,284	0	0
	Haridwar District	Haridwar Natural Gas Private Limited	4	22,921	0	0
	Udham Singh Nagar District	Indian-Oil Adani Gas Private Limited	6	10,219	35	46
	Uttarakhand Total		16	43,424	35	46
West Bengal	Burdwan District	Indian-Oil Adani Gas Private Limited	12	0	0	0
	CNG Stations	Great Eastern Energy Corporation Limited (GEECL)	1	0	0	0
	Howrah (EAAA) District and Hoogly (EAAA) District	Hindustan Petroleum Corporation Limited	2	0	0	0
	Kolkata Municipal Corporation and Parts of Adjoining Districts	Bengal Gas Company Limited	2	0	0	0
	Nadia (EAAA) District and North 24 Parganas (EAAA) District	Hindustan Petroleum Corporation Limited	1	0	0	0
	West Bengal Total		18	0	0	0
	Grand Total		3,223	79,79,927	32,710	12,114

Source- PNGRB & GEECL

Note-

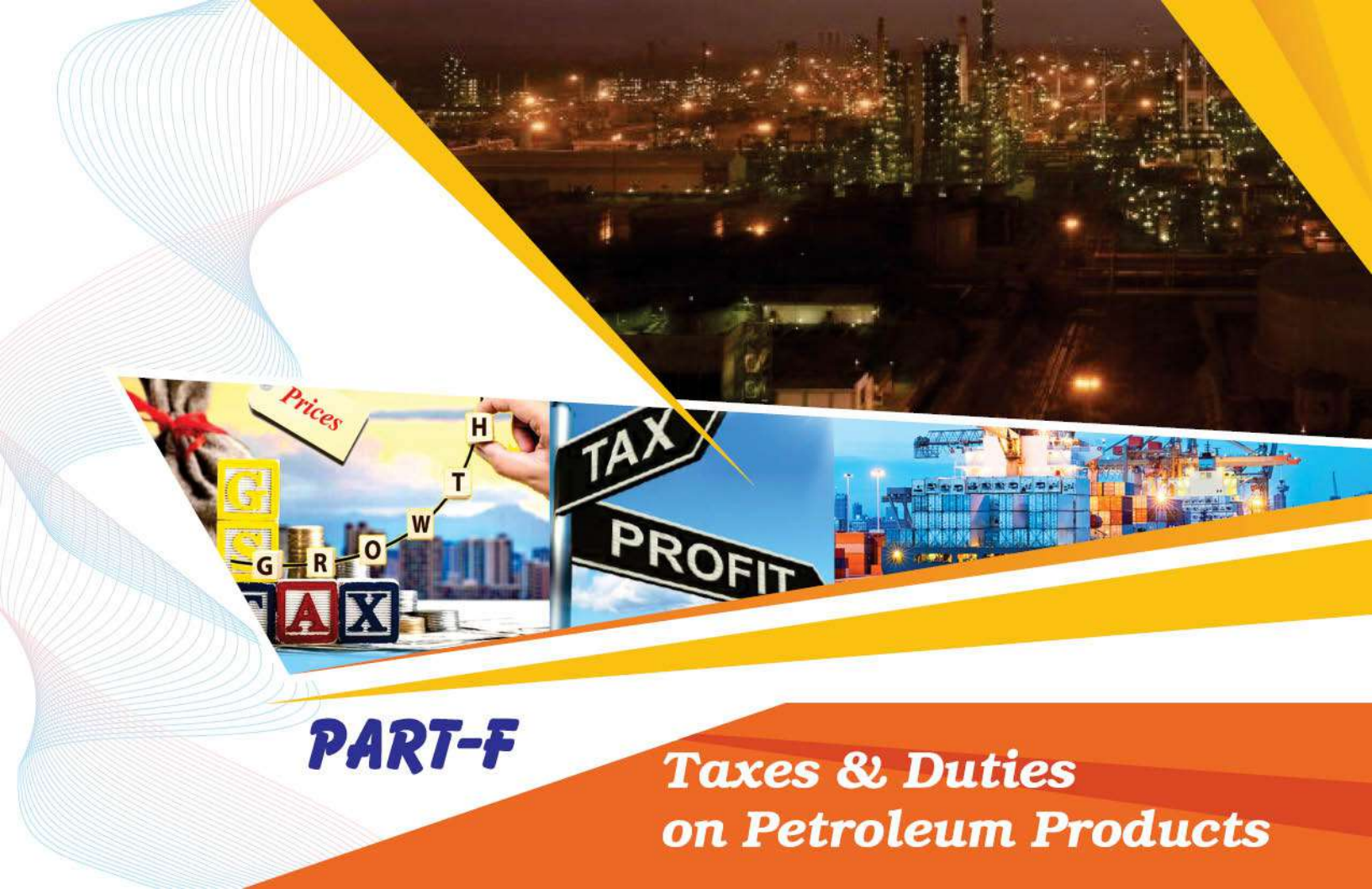
1. All the GAs where PNG connections/CNG Stations have been established is considered as Operational.
2. Under normal conditions, Operation of any particular GA commences within around one year of authorization.
3. EAAA stands for Excluding/Except Area Already Authorized | * stands for Sub-Judice | # stands for authorization of GA cancelled

23. Domestic natural gas price and gas price ceiling (GCV basis)

Period	Domestic Natural Gas price in US\$/MMBTU	Gas price ceiling in US\$/MMBTU
November 2014 - March 2015	5.05	-
April 2015 - September 2015	4.66	-
October 2015 - March 2016	3.82	-
April 2016 - September 2016	3.06	6.61
October 2016 - March 2017	2.5	5.3
April 2017 - September 2017	2.48	5.56
October 2017 - March 2018	2.89	6.3
April 2018 - September 2018	3.06	6.78
October 2018 - March 2019	3.36	7.67
April 2019 - September 2019	3.69	9.32
October 2019 - March 2020	3.23	8.43
April 2020 - September 2020	2.39	5.61
October 2020 - March 2021	1.79	4.06
April 2021 - September 2021	1.79	3.62

24. CNG/PNG prices

City	CNG (Rs/Kg)	PNG (Rs/SCM)	Source
Delhi	44.30	29.66	Indraprastha Gas Limited (w.e.f. 08.07.21)
Mumbai	51.98	30.40	Mahanagarl Gas Limited (w.e.f. midnight 13/14 July 2021)



PART-F

Taxes & Duties on Petroleum Products

25. Information on Prices, Taxes and Under-recoveries/Subsidies

International FOB prices/ Exchange rates (\$/bbl)				Price buildup of petroleum products (Rs./litre/Cylinder)		
Particulars	2019-20	2020-21	July 2021	Particulars	Petrol*	Diesel*
Crude oil (Indian Basket)	60.47	44.82	73.54	Price charged to dealers (excluding Excise Duty and VAT)	41.60	42.33
Petrol	66.94	47.68	83.10	Excise Duty	32.90	31.80
Diesel	71.78	47.86	78.21	Dealers' Commission (Average)	3.84	2.60
Kerosene	70.56	43.60	75.69	VAT (incl VAT on dealers' commission)	23.50	13.14
LPG (\$/MT)	453.75	415.17	620.00	Retail Selling Price	101.84	89.87
FO (\$/MT)	321.19	259.30	408.75			
Naphtha (\$/MT)	471.08	378.93	663.38	Particulars	PDS SKO*	Subsidised Domestic LPG*
Exchange (Rs./\$)	70.88	74.20	74.53	Price before taxes and dealers'/distributors' commission	37.97	732.92
Customs, excise duty & GST rates				Dealers'/distributors' commission	2.64	61.84
Product	Basic customs duty #	Excise duty	GST rates	GST (incl GST on dealers'/distributors' commission)	2.03	39.74
Petrol	2.50%	Rs 32.90/Ltr [^]	**	Retail Selling Price	42.64	834.50
Diesel	2.50%	Rs 31.80/Ltr [^]	**			
PDS SKO	Nil	Not Applicable	5.00%	*Petrol and Diesel at Delhi as per IOCL are as on 1st August 2021. PDS SKO at Mumbai as on 1st August 2021 and Subsidised Domestic LPG at Delhi as on 1st August 2021.		
Non-PDS SKO	5.00%		18.00%			
Domestic LPG	Nil***		5.00%			
Non Domestic LPG	5.00%		18.00%			
Furnace Oil (Non-Fert)	5.00%		18.00%			
Naphtha (Non-Fert)	2.5% [^]		18.00%			
ATF	5.00%		11% *			
Crude Oil	Rs.1/MT+ Rs.50/-MT as NCCD	Rs.1/MT+ Cess@20% + Rs.50 /-MT NCCD	**			

*2% for scheduled commuter airlines from regional connectivity scheme airports;

** GST Council shall recommend the date on which GST shall be levied on petroleum crude, HSD, MS, natural gas and ATF; # Social welfare surcharge @ 10% is levied on aggregate duties of Customs excluding CVD in lieu of IGST; *** Customs duty is Nil for import of Domestic LPG sold to household consumers (including NDEC) by PSU OMCs. Customs duty rate is 5% for other importers of domestic LPG; [^]Effective 02.02.2021.

25. Information on Prices, Taxes and Under-recoveries/Subsidies

PDS Kerosene /DBTL Subsidy			
PDS Kerosene			
Product	2018-19	2019-20	2020-21 (P)
	Rs./Crore		
Under recovery	5,950	1,833	0
Subsidy under DBTK #	98	42	0
Total	6,048	1,875	0

#DBTK subsidy excludes cash incentive/ assistance for establishment of institutional mechanism for direct transfer of subsidy paid to States/UTs. DBTK subsidy for 2019-20 is till Oct 2019.

Domestic LPG under DBTL (Direct benefit transfer for LPG)

Particulars	2018-19	2019-20	2020-21 (P)
	Rs./Crore		
DBTL subsidy	31,447	22,635	3,559
PME & IEC^	92	91	99
Total	31,539	22,726	3,658

^ on payment basis (PME & IEC- Project Management Expenditure & Information Education and Communication)

Sales & profit of petroleum sector (Rs. Crores)				
Particulars	2019-20		2020-21 (P)	
	Turnover	PAT	Turnover	PAT
Upstream/midstream Companies (PSU)	1,79,192	22,668	1,32,830	17,878
Downstream Companies (PSU)	11,74,731	6,634	10,80,618	51,542
Standalone Refineries (PSU)	1,23,424	-3,437	1,11,330	3,033
Private-RIL	3,66,177	30,903	2,78,940	31,944

Borrowings of OMCs (Rs. Crores), As on

Company	Mar`19	Mar`20	Mar`21 (P)
IOCL	86,359	1,16,545	1,02,327
BPCL	29,099	41,875	26,315
HPCL	27,240	43,021	40,009

Petroleum sector contribution to Central/State Govt.

Particulars	2018-19	2019-20	2020-21 (P)
Central Government	3,48,041	3,34,315	4,53,812
% of total revenue receipts	22%	20%	29%
State Governments	2,27,591	2,21,056	2,17,650
% of total revenue receipts	9%	8%	7%
Total (Rs. Crores)	5,75,632	5,55,370	6,71,461

Total Subsidy as a percentage of GDP (at current prices)

Particulars	2018-19	2019-20	2020-21 (P)
Petroleum subsidy	0.23	0.13	0.06

Note: GDP figure for 2018-19 and 2019-20 are Revised Estimates and 2020-21 are Provisional Estimates



PART-G

Miscellaneous

26. Capital expenditure of PSU oil companies

(Rs in crores)

Company	2018-19	2019-20	2020-21 (P)	2021-22 (P)	
				Target (Annual)	April-July
ONGC Ltd	28,738	30,115	26,441	29,800	7,416
ONGC Videsh Ltd (OVL)	6,013	5,363	5,351	8,380	2,107
Oil India Ltd (OIL)	3,702	3,724	12,802	4,108	1,322
GAIL (India) Ltd	5,958	4,381	5,560	5,861	1,567
Indian Oil Corp. Ltd. (IOCL)	26,548	28,316	27,195	28,547	6,718
Hindustan Petroleum Corp. Ltd (HPCL)	11,689	13,773	14,036	14,500	4,014
Bharat Petroleum Corp. Ltd (BPCL)	10,084	10,255	10,697	10,000	4,539
Mangalore Refinery & Petrochem Ltd (MRPL)	1,072	1,318	2,218	850	186
Chennai Petroleum Corp. Ltd (CPCL)	1,208	969	592	384	64
Numaligarh Refinery Ltd (NRL)	459	536	981	2,000	339
Balmer Lawrie Co. Ltd (BL)	125	40	42	40	6
Engineers India Ltd (EIL)	87	164	730	150	45
Total	95,684	98,955	1,06,642	1,04,620	28,322

Includes expenditure on investment in JV/subsidiaries.

(P) Provisional

Totals may not tally due to roundoff.

27. Conversion factors and volume conversion

Weight to volume conversion				Volume conversion	
Product	Weight (MT)	Volume (KL)	Barrel (bbl)	From	To
LPG	1	1.844	11.60	1 US Barrel (bbl)	159 litres
Petrol (MS)	1	1.411	8.88	1 US Barrel (bbl)	42 US Gallons
Diesel (HSD)	1	1.210	7.61	1 US Gallon	3.78 litres
Kerosene (SKO)	1	1.285	8.08	1 Kilo litre (KL)	6.29 bbl
Aviation Turbine Fuel (ATF)	1	1.288	8.10	1 Million barrels per day	49.8 MMTPA
Light Diesel Oil (LDO)	1	1.172	7.37	Energy conversion	
Furnace Oil (FO)	1	1.0424	6.74	1 Kilocalorie (kcal)	4.187 kJ
Crude Oil	1	1.170	7.33	1 Kilocalorie (kcal)	3.968 Btu
Exclusive Economic Zone				1 Kilowatt-hour (kWh)	860 kcal
200 Nautical Miles	370.4 Kilometers			1 Kilowatt-hour (kWh)	3,412 Btu

Natural gas conversions				
1 Standard Cubic Metre (SCM)	35.31 Cubic Feet		1 MMBTU	25.2 SCM @10000 kcal/SCM
1 Billion Cubic Metres (BCM)/year of Gas	2.74 MMSCMD		GCV (Gross Calorific Value)	10,000 kcal/SCM
1 Trillion Cubic Feet (TCF) of Gas Reserve	3.88 MMSCMD		NCV (Net Calorific Value)	90% of GCV
1 Million Metric Tonne Per Annum (MMTPA) of LNG	3.60 MMSCMD		Gas required for 1 MW power generation	4,541 SCM/day
1 MT of LNG	1,325 SCM		Power generation from 1 MMSCMD of gas	220 MW

Petroleum Planning & Analysis Cell

(Ministry of Petroleum & Natural Gas, Government of India)

SCOPE Complex, 2nd Floor Core-8, Lodhi Road, New Delhi-110003

Tel.: 011-24306191/92, 011-24361314, Fax: 011-24361253 www.ppac.gov.in



Analysis • Knowledge • Information