

SNAPSHOT OF INDIA'S OIL & GAS DATA

MONTHLY READY RECKONER

October-2024



Petroleum Planning and Analysis Cell

(Ministry of Petroleum and Natural Gas)



Analysis • Knowledge • Information

Snapshot of India's Oil & Gas data

Monthly Ready Reckoner

October 24



Petroleum Planning & Analysis Cell

(Ministry of Petroleum & Natural Gas)

Petroleum Planning & Analysis Cell (PPAC), an attached office of the Ministry of Petroleum & Natural Gas (MoPNG), Government of India, collects and analyses data on the Oil and Gas sector. It disseminates many reports on the Oil & Gas sector to the various stakeholders. The data is obtained from the Public Sector companies, Government agencies as well as the Private companies. Given the ever-increasing demand for energy and transition of energy demand to renewables and Biofuels, Policy makers and Analysts need to be well informed about the updated trends in the Oil & Gas industry.

The Snapshot of India's Oil & Gas data (Monthly Ready Reckoner), released by PPAC, provides monthly data/information in a single volume for the latest month and historical time series. The Snapshot of India's Oil & Gas data is also published on PPAC's website (www.ppac.gov.in) and is accessible on mobile app-PPACE.

This publication is a concerted effort by all divisions of PPAC. The cooperation of the Oil and Gas industry is acknowledged for their timely inputs.

Table of contents

| Table | Description | Page No. |
|-------|---|----------|
| | Highlights for the month | 2-3 |
| | ECONOMIC INDICATORS | |
| 1 | Selected indicators of the Indian economy | 5 |
| 2 | Crude oil, LNG and petroleum products at a glance; Graph | 6-7 |
| | CRUDE OIL, REFINING & PRODUCTION | |
| 3 | Indigenous crude oil production | 9 |
| 4 | Domestic oil & gas production vis-à-vis overseas production | 9 |
| 5 | High Sulphur (HS) & Low Sulphur (LS) Crude Oil processing | 9 |
| 6 | Quantity and value of crude oil imports | 10 |
| 7 | Self-sufficiency in petroleum products | 10 |
| 8 | Refineries: Installed capacity and crude oil processing | 11-12 |
| 9 | Crude oil and product pipeline network | 12 |
| | Oil and Gas map of India | 13 |
| 10 | Gross Refining Margins (GRM) of companies; Graph | 14-15 |
| | CONSUMPTION | |
| 11 | Production and consumption of petroleum products; Graph | 17-18 |
| 12 | Kerosene allocation vs upliftment | 19 |
| 13 | Ethanol blending programme | 19 |
| 14 | Industry marketing infrastructure | 19 |
| | LIQUEFIED PETROLEUM GAS (LPG) | |
| 15 | LPG consumption | 21 |
| 16 | LPG marketing at a glance; Graph | 21-22 |
| 17 | Region-wise data on LPG marketing; Graph | 23 |
| | NATURAL GAS | |
| 18 | Natural gas at a glance; Graph | 25 |
| 19 | Coal Bed Methane (CBM) gas development in India | 26 |
| 20 | Major natural gas pipeline network | 26 |
| 21 | Existing LNG terminals | 26 |
| 22 | Status of PNG connections & CNG stations across India | 27-28 |
| 23 | Domestic natural gas price and gas price ceiling | 29 |
| 24 | CNG/PNG prices in selected cities | 29 |
| | TAXES & DUTIES ON PETROLEUM PRODUCTS | |
| 25 | Information on prices, taxes and under-recoveries/subsidies | 31-32 |
| | MISCELLANEOUS | |
| 26 | Capital expenditure of PSU oil companies | 34 |
| 27 | Conversion factors and volume conversion | 35 |

Highlights for the month

- Indigenous crude oil and condensate production during October 2024 was 2.4 MMT. OIL registered a production of 0.3 MMT, ONGC registered a production of 1.6 MMT whereas PSC/RSC registered production of 0.5 MMT during October 2024. There is a de-growth of 4.9 % in crude oil and condensate production during October 2024 as compared with the corresponding period of the previous year.
- Total Crude oil processed during October 2024 was 21.3 MMT which is 3.6 % higher than October 2023, where PSU/JV refiners processed 14.1 MMT and private refiners processed 7.2 MMT of crude oil. Total indigenous crude oil processed was 2 MMT and total Imported crude oil processed was 19.3 by all Indian refineries (PSU+JV+PVT). There was a growth of 2 % in total crude oil processed in April-October FY 2024-25 as compared to same period of previous Financial Year.
- Crude oil imports increased by 4.2% and 3.5% during October 2024 and April-October FY 2024-25 respectively as compared to the corresponding period of the previous year. As compared to net import bill for Oil & Gas for Oct 2023 of \$ 11.8 billion, the net import bill for Oil & Gas for Oct 2024 was \$ 10.6 billion. Out of which, crude oil imports constitutes \$ 10.6 billion, LNG imports \$1.2 billion and the exports were \$ 3.3 billion during Oct 2024.
- The price of Brent Crude averaged \$75.66/bbl during Oct 2024 as against \$74.33/bbl during Sept 2024 and \$91.05/bbl during Oct 2023. The Indian basket crude price averaged \$75.12/bbl during Oct 2024 as against \$73.69/bbl during Sept 2024 and \$90.08 /bbl during Oct 2023.
- Production of petroleum products was 23 MMT during October 2024 which is 5.2% higher than October 2023. Out of 23 MMT, 22.7 MMT was from refinery production & 0.3 MMT was from fractionator. There was a growth of 2.8 % in production of petroleum products in April-October FY 2024 – 25 as compared to same period of FY 2023 – 24. Out of total POL production, in October 2024, share of major products including HSD is 41 %, MS 16.8 %, Naphtha 6.7 %, ATF 6.6 %, Pet Coke 5.3 %, LPG 4.5 %, and rest is shared by Bitumen, FO/LSHS, LDO, Lubes & others.
- POL products imports decreased by 2.2% and increased by 7.7% during October 2024 and April-October FY 2024-25 respectively as compared to the corresponding period of the previous year. Increase in POL products imports during April-October FY 2024-25 were mainly due to increase in imports of petcoke, liquified petroleum gas (LPG) and lubes/LOBS etc.

| | |
|---|---|
| • | Exports of POL products increased by 12.7% and 4.2% during October 2024 and April-October FY 2024-25 respectively as compared to the corresponding period of the previous year. Increase in POL products exports during April-October FY 2024-25 were mainly on account of increase in exports of petcoke/CBFS, fuel oil (FO), motor spirit (MS) and aviation turbine fuel (ATF) etc. |
| • | The consumption of petroleum products during April-Oct 2024, with a volume of 137.6 MMT, reported a growth of 3.0 % compared to the volume of 133.7 MMT during the same period of the previous year. This growth was led by 7.4% growth in MS, 6.6% in LPG, 10.2% growth in ATF, 0.8% in HSD ,15.5% growth in Lubes, 10.0% growth in Petcoke and 1.4% in Naphtha and consumption besides growth in FO/LSHS during the period. The Consumption of petroleum products for the month of Oct-2024 recorded growth of 2.9% with a volume of 20.0 MMT compared to the same period of the previous year. |
| • | Total Natural Gas Consumption (including internal consumption) for the month of October 2024 was 6005 MMSCM which was 4.2% higher than the corresponding month of the previous year. The cumulative consumption of 43033 MMSCM for the current financial year till October 2024 was higher by 11.2% compared with the corresponding period of the previous year. |
| • | Gross production of natural gas for the month of October 2024 (P) was 3111 MMSCM which was lower by 1.6% compared with the corresponding month of the previous year. The cumulative gross production of natural gas of 21271 MMSCM for the current financial year till October 2024 was higher by 1.1% compared with the corresponding period of the previous year. |
| • | LNG import for the month of October 2024 (P) are calculated on prorata basis and was 2932 MMSCM which was 10.5% higher than the corresponding month of the previous year. The cumulative import of 22085(P) MMSCM for the current financial year till October 2024 is higher by 22.2 % compared with the corresponding period of the previous year. |



PART-A

Economic Indicators

| 1. Selected indicators of the Indian economy | | | | | | | | |
|--|---|------------|---------------|----------------|-----------------|-------------|-------------|----------------------|
| Economic indicators | | Unit/ Base | 2019-20 | 2020-21 | 2021-22 | 2022-23 | 2023-24 | 2024-25 |
| 1 | Population (basis RGI projections) | Billion | 1.337 | 1.351 | 1.365 | 1.377 | 1.388 | 1.405 |
| 2 | GDP at constant (2011-12 Prices) | Growth % | 4.0 1st RE | -6.6 1st RE | 9.1 1st RE | 7.2 PE | 7.6 (E) | 6.7 Q1 (E) |
| 3 | Agricultural Production (Food grains) | MMT | 297.5 | 310.7 | 315.7 4th AE | 329.7 FE | 332.3 FE | 164.7 1st AE (H1) |
| | | Growth % | 4.3 | 4.5 | 1.6 | 4.4 | 0.8 | 10.9 |
| 4 | Gross Fiscal Deficit (as percent of GDP) | % | 4.6 | 9.5 RE | 6.7 RE | 6.4 RE | 5.9 RE | 4.9 OE |

| Economic indicators | | Unit/ Base | 2022-23 | 2023-24 | October | | April-October | |
|---------------------|---|------------|---------|---------|---------|------------|---------------|-------------|
| | | | | | 2023-24 | 2024-25(P) | 2023-24 | 2024-25 (P) |
| 5 | Index of Industrial Production (Base: 2011-12) | Growth % | 5.2 | 5.9 | 6.4 | 3.1* QE | 6.2# | 4.0# |
| 6 | Imports^ | \$ Billion | 714.2 | 677.2 | 54.5 | 55.4 | 330.3 | 350.7 |
| 7 | Exports^ | \$ Billion | 451.0 | 437.1 | 34.4 | 34.6 | 211.1 | 213.2 |
| 8 | Trade Balance | \$ Billion | -263.2 | -240.1 | -20.1 | -20.8 | -119.2 | -137.4 |
| 9 | Foreign Exchange Reserves @ | \$ Billion | 578.4 | 645.6 | 586.1 | 684.8 | - | - |

Population projection by RGI is taken as on 1st July for the year. IIP is for the month of *Sept'24 and #April-Sept'23 and Apr-Sept'24; @ 2022-23 as on March 31, 2023, 2023-24 as on March 29, 2024, Oct 2023 as on Oct' 27, 2023 and Oct, 2024 as on Oct 25, 2024; ^Imports & Exports are for Merchandise for the month of Sept 2023 & Sept 2024 and Apr-Sept 2023 and Apr-Sept 2024; Agricultural growth for 24-25 is w.r.t. 1st AE for 23-24; E: Estimates; PE: Provisional Estimates; AE-Advanced Estimates; RE-Revised Estimates; QE-Quick Estimates; FE-Final Estimates.

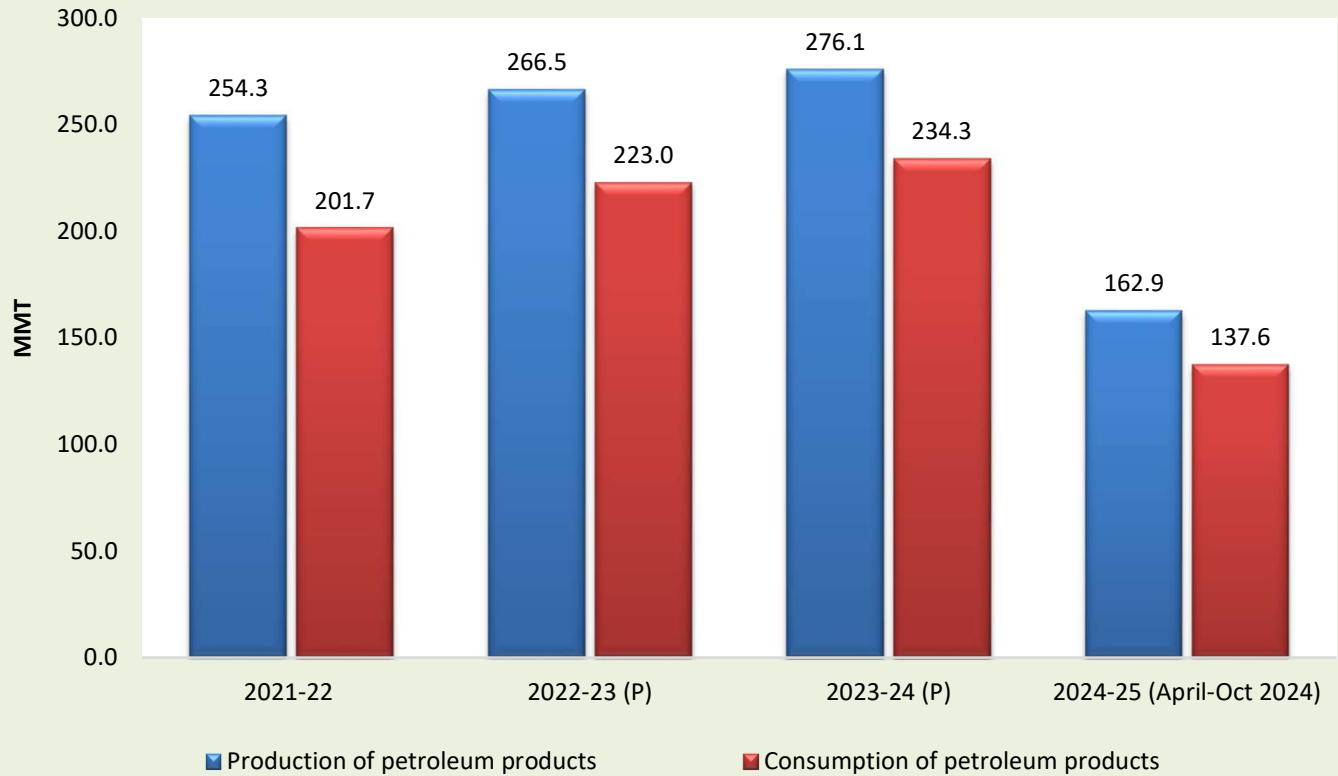
Source: Registrar General India, Ministry of Commerce & Industry, Ministry of Statistics and Programme Implementation, Ministry of Agriculture & Farmer's Welfare, Ministry of Finance, Reserve Bank of India

2. Crude oil, LNG and petroleum products at a glance

| Details | | Unit/ Base | 2022-23 (P) | 2023-24 (P) | October | | April-October | |
|---------------------------------------|--|------------|----------------|----------------|-------------|-------------|---------------|-------------|
| | | | | | 2023-24 (P) | 2024-25 (P) | 2023-24 (P) | 2024-25 (P) |
| 1 | Crude oil production in India [#] | MMT | 29.2 | 29.4 | 2.5 | 2.4 | 17.2 | 16.7 |
| 2 | Consumption of petroleum products* | MMT | 223.0 | 234.3 | 19.5 | 20.0 | 133.7 | 137.6 |
| 3 | Production of petroleum products | MMT | 266.5 | 276.1 | 21.8 | 23.0 | 158.4 | 162.9 |
| 4 | Gross natural gas production | MMSCM | 34,450 | 36,438 | 3,161 | 3,111 | 21,040 | 21,271 |
| 5 | Natural gas consumption | MMSCM | 59,969 | 67,512 | 5,764 | 6,005 | 38,684 | 43,033 |
| 6 | Imports & exports: | | | | | | | |
| Crude oil imports | | MMT | 232.7 | 234.3 | 18.7 | 19.5 | 135.4 | 140.2 |
| | | \$ Billion | 157.5 | 133.4 | 11.9 | 10.6 | 75.9 | 81.7 |
| Petroleum products (POL) imports* | | MMT | 44.6 | 48.7 | 4.5 | 4.4 | 27.9 | 30.1 |
| | | \$ Billion | 26.9 | 22.9 | 2.4 | 2.2 | 13.0 | 14.1 |
| Gross petroleum imports (Crude + POL) | | MMT | 277.3 | 283.0 | 23.3 | 24.0 | 163.3 | 170.2 |
| | | \$ Billion | 184.4 | 156.3 | 14.3 | 12.7 | 88.9 | 95.8 |
| Petroleum products (POL) export | | MMT | 61.0 | 62.6 | 4.5 | 5.1 | 35.3 | 36.8 |
| | | \$ Billion | 57.3 | 47.7 | 3.6 | 3.3 | 27.3 | 25.4 |
| LNG imports* | | MMSCM | 26,304 | 31,795 | 2,653 | 2,932 | 18,070 | 22,085 |
| | | \$ Billion | 17.1 | 13.3 | 1.1 | 1.2 | 7.6 | 8.9 |
| Net oil & gas imports | | \$ Billion | 144.2 | 121.9 | 11.8 | 10.6 | 69.2 | 79.3 |
| 7 | Petroleum imports as percentage of India's gross imports (in value terms)^ | % | 25.8 | 23.1 | 26.2 | 23.0 | 23.1 | 23.4 |
| 8 | Petroleum exports as percentage of India's gross exports (in value terms)^ | % | 12.7 | 10.9 | 10.5 | 9.5 | 11.1 | 10.2 |
| 9 | Import dependency of crude oil (on POL consumption basis) | % | 87.4 | 87.8 | 87.7 | 89.0 | 87.6 | 88.1 |

#Includes condensate; *Private direct imports are prorated for the period Sept'24 to Oct'24 for POL. LNG Imports figure from DGCIS are prorated for Sept'24 to Oct'24. Total may not tally due to rounding off. ^^ Import and Exports for Oct'24 is prorated.

Production & Consumption of Petroleum Products (MMT)





PART-B

Crude Oil, Refining & Production

3. Indigenous crude oil production (Million Metric Tonnes)

| Details | 2022-23 (P) | 2023-24 (P) | October | | | April-October | | |
|--|----------------|----------------|----------------|--------------------|-------------|---------------|--------------------|-------------|
| | | | 2023-24 (P) | 2024-25 Target* | 2024-25 (P) | 2023-24 (P) | 2024-25 Target* | 2024-25 (P) |
| ONGC | 18.4 | 18.1 | 1.5 | 1.7 | 1.4 | 10.6 | 11.5 | 10.3 |
| Oil India Limited (OIL) | 3.2 | 3.3 | 0.3 | 0.3 | 0.3 | 1.9 | 2.2 | 2.0 |
| Private / Joint Ventures (JVs) | 6.2 | 5.7 | 0.5 | 0.7 | 0.4 | 3.4 | 4.4 | 3.1 |
| Total Crude Oil | 27.8 | 27.2 | 2.3 | 2.7 | 2.2 | 15.9 | 18.0 | 15.4 |
| ONGC condensate | 1.0 | 1.1 | 0.1 | 0.0 | 0.1 | 0.6 | 0.0 | 0.6 |
| PSC condensate | 0.3 | 1.1 | 0.1 | 0.0 | 0.1 | 0.6 | 0.0 | 0.7 |
| Total condensate | 1.4 | 2.2 | 0.2 | 0.0 | 0.2 | 1.2 | 0.0 | 1.3 |
| Total (Crude + Condensate) (MMT) | 29.2 | 29.4 | 2.5 | 2.7 | 2.4 | 17.2 | 18.0 | 16.7 |
| Total (Crude + Condensate) (Million Bbl/Day) | 0.59 | 0.59 | 0.59 | 0.64 | 0.56 | 0.59 | 0.62 | 0.57 |

*Provisional targets inclusive of condensate.

4. Domestic and overseas oil & gas production (by Indian Companies)

| Details | 2022-23 (P) | 2023-24 (P) | October | | April-October | |
|-----------------------------------|----------------|----------------|-------------|-------------|---------------|-------------|
| | | | 2023-24 (P) | 2024-25 (P) | 2023-24 (P) | 2024-25 (P) |
| Total domestic production (MMTOE) | 63.6 | 65.8 | 5.7 | 5.5 | 38.2 | 38.0 |
| Overseas production (MMTOE) | 19.5 | 19.9 | 1.6 | 1.6 | 11.5 | 11.3 |

Source: ONGC Videsh, GAIL, OIL, IOCL, HPCL & BPCL

5. High Sulphur (HS) & Low Sulphur (LS) crude oil processing (MMT)

| Details | | 2022-23 (P) | 2023-24 (P) | October | | April-October | |
|---|--------------------|----------------|----------------|--------------|--------------|---------------|--------------|
| | | | | 2023-24 (P) | 2024-25 (P) | 2023-24 (P) | 2024-25 (P) |
| 1 | High Sulphur crude | 197.9 | 205.2 | 16.2 | 16.9 | 116.4 | 120.1 |
| 2 | Low Sulphur crude | 57.4 | 56.3 | 4.4 | 4.5 | 34.0 | 33.3 |
| Total crude processed (MMT) | | 255.2 | 261.5 | 20.6 | 21.3 | 150.4 | 153.4 |
| Total crude processed (Million Bbl/Day) | | 5.13 | 5.25 | 4.86 | 5.04 | 5.15 | 5.25 |
| Percentage share of HS crude in total crude oil processing | | 77.5% | 78.5% | 78.6% | 79.1% | 77.4% | 78.3% |

| 6. Quantity and value of crude oil imports | | | |
|--|----------------|------------|-----------|
| Year | Quantity (MMT) | \$ Million | Rs. Crore |
| 2021-22 | 212.4 | 120675 | 9,01,262 |
| 2022-23 | 232.7 | 157531 | 12,60,372 |
| 2023-24 (P) | 234.3 | 133366 | 11,05,176 |
| April-October 2024-25(P) | 140.2 | 81734 | 6,84,176 |

| 7. Self-sufficiency in petroleum products (Million Metric Tonnes) | | | | | | | |
|---|---|----------------|------------|-------------|-------------|---------------|-------------|
| Particulars | | 2022-23 (P) | 2023-24(P) | October | | April-October | |
| | | | | 2023-24 (P) | 2024-25 (P) | 2023-24 (P) | 2024-25 (P) |
| 1 | Indigenous crude oil processing | 26.5 | 26.9 | 2.3 | 2.0 | 15.6 | 15.3 |
| 2 | Products from indigenous crude (93.3% of crude oil processed) | 24.7 | 25.1 | 2.1 | 1.9 | 14.5 | 14.2 |
| 3 | Products from fractionators (Including LPG and Gas) | 3.5 | 3.5 | 0.3 | 0.3 | 2.0 | 2.1 |
| 4 | Total production from indigenous crude & condensate (2 + 3) | 28.2 | 28.6 | 2.4 | 2.2 | 16.6 | 16.4 |
| 5 | Total domestic consumption | 223.0 | 234.3 | 19.5 | 20.0 | 133.7 | 137.6 |
| % Self-sufficiency (4 / 5) | | 12.6% | 12.2% | 12.3% | 11.0% | 12.4% | 11.9% |

| 8. Refineries: Installed capacity and crude oil processing (MMTPA / MMT) | | | | | | | | | | |
|--|-------------------|---|----------------------------|----------------|----------------|---------------------|----------------|----------------|---------------------|----------------|
| Sl. no. | Refinery | Installed capacity (01.04.2024) MMTPA | Crude oil processing (MMT) | | | | | | | |
| | | | 2022-23 (P) | 2023-24 (P) | October | | | April-October | | |
| | | | | | 2023-24 (P) | 2024-25 (Target) | 2024-25 (P) | 2023-24 (P) | 2024-25 (Target) | 2024-25 (P) |
| 1 | Barauni (1964) | 6.0 | 6.8 | 6.6 | 0.5 | 0.6 | 0.6 | 3.8 | 3.8 | 3.9 |
| 2 | Koyali (1965) | 13.7 | 15.6 | 15.2 | 1.3 | 0.8 | 1.4 | 8.8 | 8.6 | 9.3 |
| 3 | Haldia (1975) | 8.0 | 8.5 | 8.1 | 0.7 | 0.7 | 0.4 | 4.5 | 4.2 | 3.4 |
| 4 | Mathura (1982) | 8.0 | 9.6 | 9.2 | 0.9 | 0.9 | 0.0 | 5.2 | 4.6 | 4.4 |
| 5 | Panipat (1998) | 15.0 | 13.8 | 14.3 | 1.3 | 1.2 | 1.4 | 8.7 | 9.2 | 8.8 |
| 6 | Guwahati (1962) | 1.2 | 1.1 | 1.0 | 0.0 | 0.1 | 0.1 | 0.6 | 0.8 | 0.7 |
| 7 | Digboi (1901) | 0.65 | 0.7 | 0.7 | 0.1 | 0.1 | 0.1 | 0.4 | 0.4 | 0.4 |
| 8 | Bongaigaon(1979) | 2.70 | 2.8 | 3.0 | 0.3 | 0.3 | 0.3 | 1.8 | 1.5 | 1.5 |
| 9 | Paradip (2016) | 15.0 | 13.6 | 15.2 | 0.7 | 1.4 | 1.3 | 8.5 | 9.1 | 7.8 |
| | IOCL-TOTAL | 70.3 | 72.4 | 73.3 | 5.7 | 6.0 | 5.4 | 42.2 | 42.2 | 40.3 |
| 10 | Manali (1969) | 10.5 | 11.3 | 11.6 | 1.0 | 1.0 | 0.7 | 6.7 | 6.1 | 5.6 |
| 11 | CBR (1993) | 0.0 | 0.0 | 0.0 | 0.0 | 0.0 | 0.0 | 0.0 | 0.0 | 0.0 |
| | CPCL-TOTAL | 10.5 | 11.3 | 11.6 | 1.0 | 1.0 | 0.7 | 6.7 | 6.1 | 5.6 |
| 12 | Mumbai (1955) | 12.0 | 14.5 | 15.1 | 0.7 | 1.3 | 1.4 | 8.8 | 8.9 | 9.3 |
| 13 | Kochi (1966) | 15.5 | 16.0 | 17.3 | 1.5 | 1.2 | 1.0 | 9.9 | 9.5 | 9.6 |
| 14 | Bina (2011) | 7.8 | 7.8 | 7.1 | 0.7 | 0.7 | 0.7 | 3.8 | 4.2 | 4.4 |
| | BPCL-TOTAL | 35.3 | 38.4 | 39.5 | 3.0 | 3.2 | 3.1 | 22.5 | 22.6 | 23.3 |
| 15 | Numaligarh (1999) | 3.0 | 3.1 | 2.5 | 0.29 | 0.3 | 0.3 | 1.1 | 1.8 | 1.7 |

| Sl. no. | Refinery | Installed capacity (01.04.2024) MMTPA | Crude oil processing (MMT) | | | | | | | |
|------------------------------------|---------------------------|---|----------------------------|----------------|----------------|---------------------|----------------|----------------|---------------------|----------------|
| | | | 2022-23 (P) | 2023-24 (P) | October | | | April-October | | |
| | | | | | 2023-24 (P) | 2024-25 (Target) | 2024-25 (P) | 2023-24 (P) | 2024-25 (Target) | 2024-25 (P) |
| 16 | Tatipaka (2001) | 0.07 | 0.07 | 0.07 | 0.005 | 0.006 | 0.006 | 0.04 | 0.04 | 0.04 |
| 17 | MRPL-Mangalore (1996) | 15.0 | 17.1 | 16.5 | 1.4 | 1.5 | 1.5 | 9.0 | 10.1 | 10.3 |
| | ONGC-TOTAL | 15.1 | 17.2 | 16.6 | 1.4 | 1.5 | 1.5 | 9.0 | 10.1 | 10.3 |
| 18 | Mumbai (1954) | 9.5 | 9.8 | 9.6 | 0.9 | 0.8 | 0.9 | 5.9 | 5.5 | 5.6 |
| 19 | Visakh (1957) | 13.7 | 9.3 | 12.7 | 1.0 | 1.2 | 1.2 | 7.2 | 7.6 | 8.6 |
| 20 | HMEL-Bathinda (2012) | 11.3 | 12.7 | 12.6 | 1.1 | 1.0 | 1.1 | 7.6 | 7.0 | 7.6 |
| | HPCL- TOTAL | 34.5 | 31.8 | 35.0 | 3.0 | 3.0 | 3.2 | 20.7 | 20.0 | 21.8 |
| 21 | RIL-Jamnagar (DTA) (1999) | 33.0 | 34.4 | 34.4 | 2.9 | 2.9 | 2.8 | 20.1 | 20.1 | 20.3 |
| 22 | RIL-Jamnagar (SEZ) (2008) | 35.2 | 27.9 | 28.3 | 1.6 | 1.6 | 2.6 | 16.2 | 16.2 | 18.1 |
| 23 | NEL-Vadinar (2006) | 20.0 | 18.7 | 20.3 | 1.7 | 1.7 | 1.7 | 11.8 | 11.8 | 12.0 |
| All India (MMT) | | 256.8 | 255.2 | 261.5 | 20.6 | 21.2 | 21.3 | 150.4 | 151.0 | 153.4 |
| All India (Million Bbl/Day) | | 5.02 | 5.13 | 5.24 | 4.86 | 5.02 | 5.04 | 5.15 | 5.17 | 5.25 |

Note: Provisional Targets; Some sub-totals/ totals may not add up due to rounding off at individual levels. The Inputs to Refinery includes both Crude Oil and Other Inputs (OI), however Other Inputs (OI) do not form part of the above data.

| 9. Major crude oil and product pipeline network (as on 01.11.2024) | | | | | | | | | | |
|--|-------------|-------|-------|-------|-------|--------|-------|-------|---------|--------|
| Details | | ONGC | OIL | Cairn | HMEL | IOCL | BPCL | HPCL | Others* | Total |
| Crude Oil | Length (KM) | 1,284 | 1,195 | 688 | 1,017 | 5,822 | 937 | | | 10,943 |
| | Cap (MMTPA) | 60.6 | 9.0 | 10.7 | 11.3 | 53.8 | 7.8 | | | 153.1 |
| Products | Length (KM) | | 654 | | | 12,807 | 2,600 | 5,133 | 2,399 | 23,593 |
| | Cap (MMTPA) | | 1.7 | | | 70.6 | 22.6 | 35.2 | 10.2 | 140.3 |

*Others include GAIL and Petronet India. HPCL and BPCL lubes pipeline included in products pipeline data

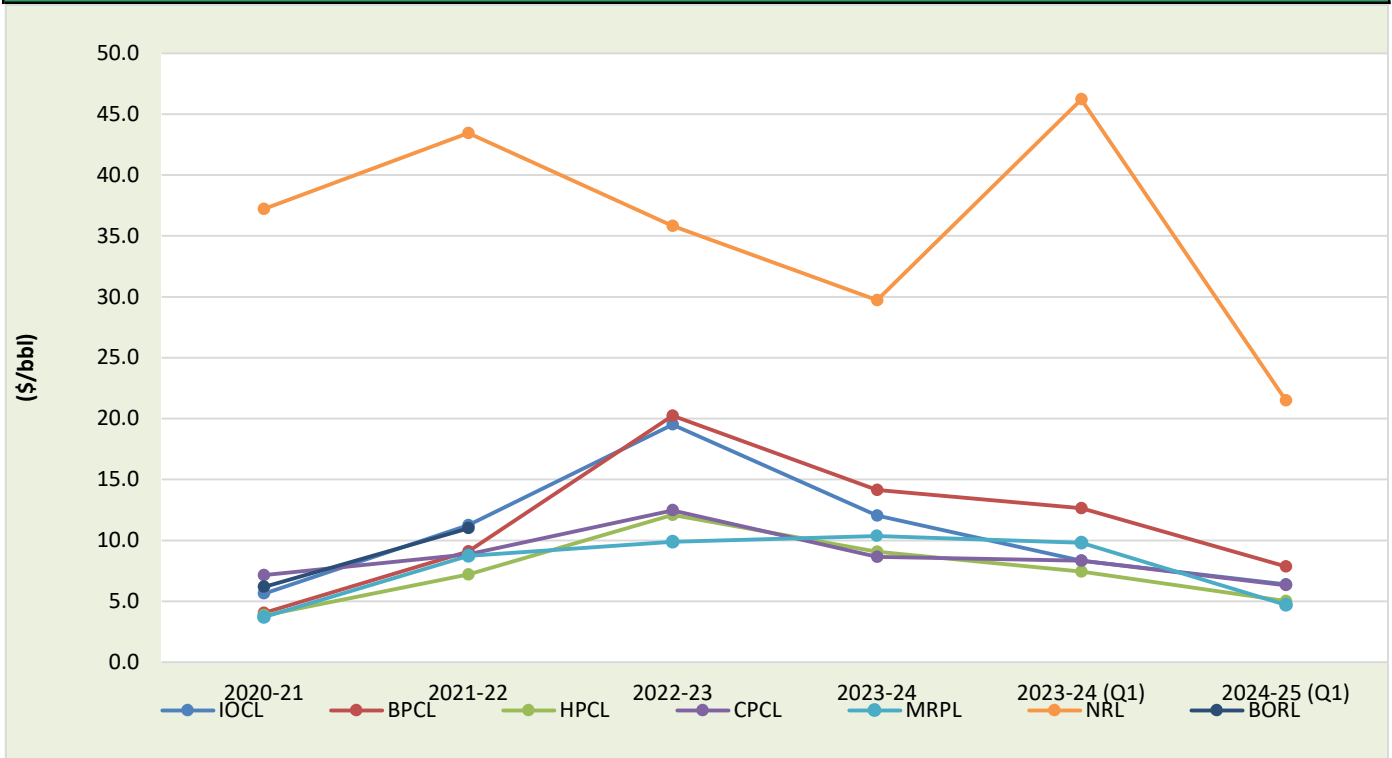
| 10. Gross Refining Margins (GRM) of refineries (\$/bbl) | | | | | | |
|---|---------|---------|---------|---------|------------|---------|
| Company | 2020-21 | 2021-22 | 2022-23 | 2023-24 | April-June | |
| | | | | | 2023-24 | 2024-25 |
| IOCL | 5.64 | 11.25 | 19.52 | 12.05 | 8.34 | 6.39 |
| BPCL | 4.06 | 9.09 | 20.24 | 14.14 | 12.64 | 7.86 |
| HPCL | 3.86 | 7.19 | 12.09 | 9.08 | 7.44 | 5.03 |
| CPCL | 7.14 | 8.85 | 12.48 | 8.64 | 8.33 | 6.33 |
| MRPL | 3.71 | 8.72 | 9.88 | 10.36 | 9.81 | 4.70 |
| NRL | 37.23 | 43.46 | 35.82 | 29.72 | 46.23 | 21.50 |
| BORL | 6.20 | 11.00 | # | # | # | # |
| RIL | * | * | * | * | * | * |
| NEL | * | * | * | * | * | * |

GRM of North Eastern refineries are including excise duty benefit

BPCL figures effective 2022-23 includes BORL also after its merger with BPCL

*Not available

Gross Refining Margins (GRM) of refineries (\$/bbl)



GRM of North Eastern refineries are including excise duty benefit. RIL and NEL data is not available



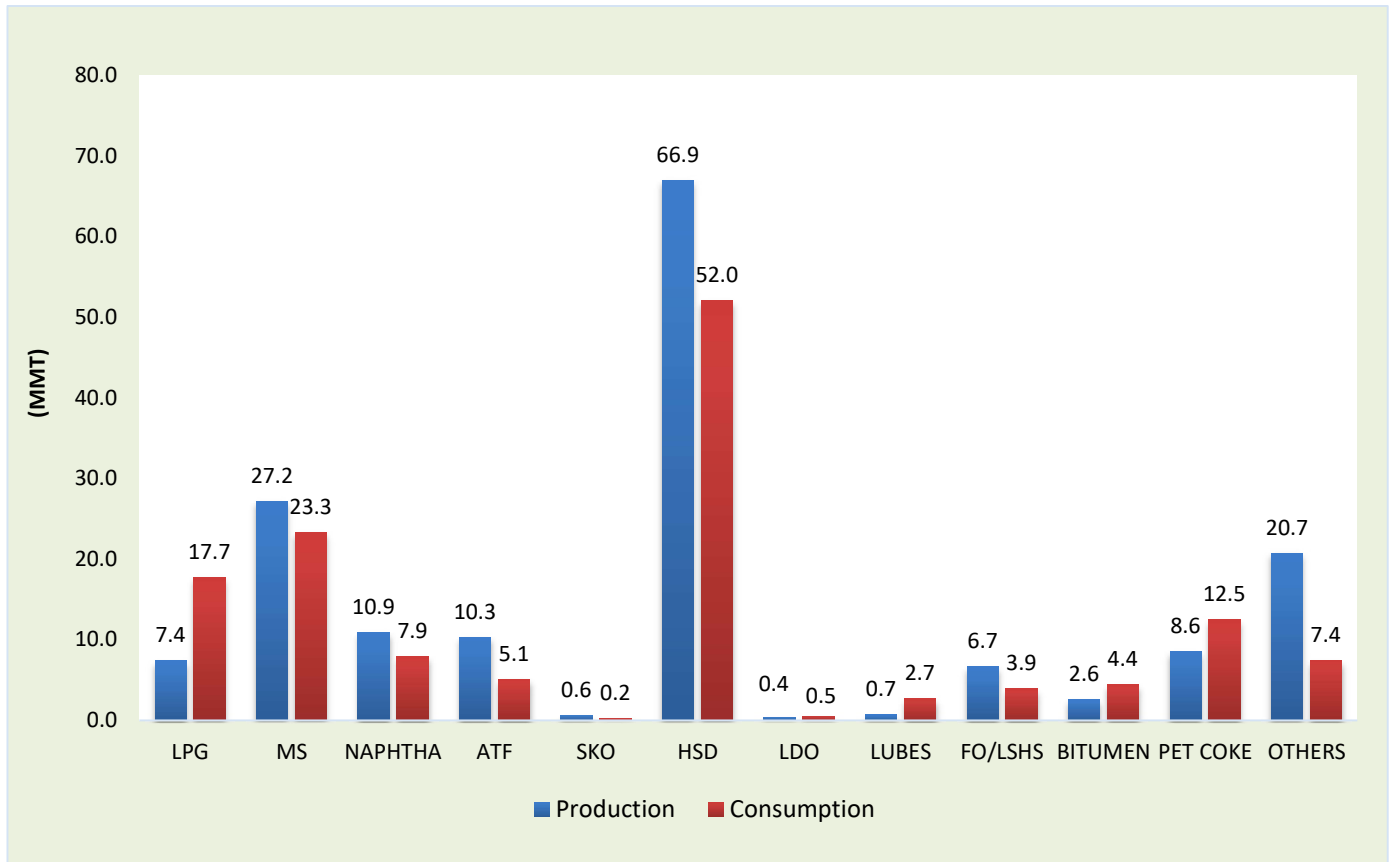
PART-C

Consumption

| 11. Production and consumption of petroleum products (Million Metric Tonnes) | | | | | | | | | | | | |
|--|--------------|--------------|--------------|--------------|----------------|-------------|----------------|-------------|----------------|--------------|----------------|--------------|
| Products | 2022-23 (P) | | 2023-24 (P) | | October 23 (P) | | October 24 (P) | | Apr-Oct'23 (P) | | Apr-Oct'24 (P) | |
| | Prod | Cons | Prod | Cons | Prod | Cons | Prod | Cons | Prod | Cons | Prod | Cons |
| LPG | 12.8 | 28.5 | 12.8 | 29.7 | 1.0 | 2.5 | 1.0 | 2.7 | 7.3 | 16.6 | 7.4 | 17.7 |
| MS | 42.8 | 35.0 | 45.1 | 37.2 | 3.3 | 3.1 | 3.9 | 3.4 | 25.7 | 21.7 | 27.2 | 23.3 |
| NAPHTHA | 17.0 | 12.2 | 18.3 | 13.8 | 1.4 | 1.2 | 1.5 | 1.2 | 10.3 | 7.8 | 10.9 | 7.9 |
| ATF | 15.0 | 7.4 | 17.1 | 8.2 | 1.3 | 0.7 | 1.5 | 0.8 | 9.7 | 4.7 | 10.3 | 5.1 |
| SKO | 0.9 | 0.5 | 1.0 | 0.5 | 0.0 | 0.03 | 0.08 | 0.03 | 0.58 | 0.29 | 0.6 | 0.24 |
| HSD | 113.8 | 85.9 | 115.9 | 89.6 | 9.4 | 7.6 | 9.4 | 7.6 | 66.7 | 51.6 | 66.9 | 52.0 |
| LDO | 0.6 | 0.7 | 0.7 | 0.8 | 0.06 | 0.1 | 0.1 | 0.1 | 0.4 | 0.5 | 0.4 | 0.5 |
| LUBES | 1.3 | 3.7 | 1.4 | 4.1 | 0.1 | 0.3 | 0.1 | 0.4 | 0.8 | 2.3 | 0.7 | 2.7 |
| FO/LSHS | 10.4 | 7.0 | 10.3 | 6.5 | 0.7 | 0.5 | 0.9 | 0.6 | 6.6 | 3.8 | 6.7 | 3.9 |
| BITUMEN | 4.9 | 8.0 | 5.2 | 8.8 | 0.4 | 0.7 | 0.3 | 0.7 | 2.8 | 4.8 | 2.6 | 4.4 |
| PET COKE | 15.4 | 18.3 | 15.1 | 20.3 | 1.1 | 1.6 | 1.2 | 1.7 | 8.6 | 11.3 | 8.6 | 12.5 |
| OTHERS | 31.5 | 15.8 | 33.3 | 14.7 | 3.0 | 1.0 | 3.0 | 0.8 | 19.0 | 8.3 | 20.7 | 7.4 |
| ALL INDIA | 266.5 | 223.0 | 276.1 | 234.3 | 21.8 | 19.5 | 23.0 | 20.0 | 158.4 | 133.7 | 162.9 | 137.6 |
| Growth (%) | 4.8% | 10.6% | 3.6% | 5.0% | 3.2% | 4.8% | 5.2% | 2.9% | 4.0% | 6.1% | 2.8% | 3.0% |

Note: Prod - Production; Cons - Consumption

Petroleum Products: April-October 2024 (P) (MMT)



| 12. Kerosene allocation vs upliftment (Kilo Litres) | | | | | | | | |
|---|------------|------------|------------|------------|--------------|------------|-------------|------------|
| Product | 2021-22 | | 2022-23 | | 2023-24 (P)* | | 2024-25 (P) | |
| | Allocation | Upliftment | Allocation | Upliftment | Allocation | Upliftment | Allocation | Upliftment |
| PDS Kerosene | 17,83,344 | 16,59,906 | 12,43,644 | 3,96,115 | 971,796 | 383,479 | 330,900 | 175,777 |

* Allocation is for Apr-Dec'2024 and upliftment is for Apr-Oct'2024.

| 13. Ethanol blending programme | | | | | |
|---|-----------------------|---------|-----------------------------|---------|---------------|
| Particulars | Ethanol Supply Year * | | | | |
| | 2020-21 | 2021-22 | 2022-23 (Dec'22- Oct'23) | Sep'24# | Nov'23-Sep'24 |
| Ethanol received by PSU OMCs under EBP Program (in Cr. Litrs) | 296.1 | 408.1 | 494.0 | 58.6 | 585.2 |
| Ethanol blended under EBP Program (in Cr. Litrs) | 302.3 | 433.6 | 508.8 | 62.4 | 607.4 |
| Average Percentage of Blending Sales (EBP%) | 8.1% | 10.0% | 12.1% | 15.9% | 13.8% |

*Ethanol Supply Year : Ethanol supply year for 2022-23 taken for Dec'22-Oct'23 & thereafter changed to ethanol supplies between 1st November of current year to 31st October of the following year.

Note: With effect from 01.04.2019, EBP Programme has been extended to whole of India except UTs of Andaman and Nicobar Islands and Lakshadweep.# Data for Oct'2024 is yet to be released.

| 14. Industry marketing infrastructure (as on 01.11.2024) (Provisional) | | | | | | | | |
|--|--------|--------|--------|---------------|-------|-------|---------------|--------|
| Particulars | IOCL | BPCL | HPCL | RIL/RBML/RSIL | NEL | SHELL | MRPL & Others | Total |
| POL Terminal/ Depots (Nos.) [§] | 127 | 80 | 78 | 17 | 3 | | 7 | 312 |
| Aviation Fuel Stations (Nos.) [@] | 129 | 71 | 56 | 31 | | | 10 | 297 |
| Retail Outlets (total) (Nos.) [^] | 38,432 | 22,549 | 22,631 | 1,832 | 6,589 | 362 | 113 | 92,508 |
| out of which Rural ROs | 12,599 | 5,803 | 5,641 | 130 | 2,080 | 84 | 35 | 26,372 |
| SKO/LDO agencies (Nos.) | 3,830 | 927 | 1,638 | | | | | 6,395 |
| LPG Distributors (total) (Nos.) (PSUs only) | 12,906 | 6,259 | 6,367 | | | | | 25,532 |
| LPG Bottling plants (Nos.) (PSUs only) [#] | 98 | 54 | 56 | | | | 3 | 211 |
| LPG Bottling capacity (TMTPA) (PSUs only) ^{&} | 11,070 | 5,220 | 6,530 | | | | 203 | 23,023 |
| LPG active domestic consumers (Nos. crore) (PSUs only) | 15.4 | 8.5 | 9.0 | | | | | 32.8 |

[§](Others=5 MRPL & 2 NRL); [@](Others=ShellMRPL); [^](Others=MRPL); [#](Others=NRL-1, OIL-1, CPCL-1); [&](Others=NRL-60, OIL-23, CPCL-120); RBML- Reliance BP Mobility Limited; RSIL- RBML Solutions India Ltd.

| Industry Alternate fuel infrastructure at Retail outlets (Nos. of ROs as on 01.11.2024) (Provisional) | | | | | | | | |
|---|-------|-------|-------|-----------|-----|-------|------|-------|
| Alternate fuel | IOCL | BPCL | HPCL | RBML/RSIL | NEL | SHELL | MRPL | Total |
| CNG LNG | 2271 | 2148 | 1817 | 40 | 34 | 0 | 3 | 6313 |
| EV Charging | 10494 | 3329 | 4123 | 122 | 797 | 262 | 35 | 19162 |
| Auto LPG | 310 | 44 | 92 | 46 | 51 | 0 | 0 | 543 |
| Compressed Bio-Gas outlets | 110 | 41 | 39 | 30 | 0 | 0 | 0 | 220 |
| Total RO's with at least one Alternate fuel | 12831 | 4885 | 5291 | 181 | 879 | 262 | 38 | 24367 |
| Solarization at Retail outlets | 33854 | 17535 | 21083 | 77 | 980 | 0 | 0 | 73529 |



PART-D

LPG

| 15. LPG consumption (Thousand Metric Tonne) | | | | | | | | |
|---|----------|----------|---------|------------|------------|---------------|-------------|------------|
| LPG category | 2022-23 | 2023-24 | October | | | April-October | | |
| | | | 2023-24 | 2024-25(P) | Growth (%) | 2023-24 | 2024-25 (P) | Growth (%) |
| 1. PSU Sales : | | | | | | | | |
| LPG-Packed Domestic | 25,381.5 | 26,207.5 | 2,187.6 | 2,381.3 | 8.9% | 14,631.5 | 15,655.5 | 7.0% |
| LPG-Packed Non-Domestic | 2,606.0 | 2,760.2 | 238.7 | 239.7 | 0.4% | 1,598.3 | 1,535.9 | -3.9% |
| LPG-Bulk | 408.9 | 593.8 | 62.0 | 91.8 | 48.2% | 346.1 | 390.5 | 12.8% |
| Auto LPG | 106.7 | 88.0 | 7.5 | 6.2 | -16.6% | 55.2 | 43.7 | -20.9% |
| Sub-Total (PSU Sales) | 28,503.1 | 29,649.4 | 2,495.7 | 2,719.1 | 8.9% | 16,631.1 | 17,625.6 | 6.0% |
| 2. Direct Private Imports* | 0.1 | 0.1 | 0.00 | 7.72 | #DIV/0! | 0.04 | 94.01 | 244648.5% |
| Total (1+2) | 28,503.2 | 29,649.5 | 2,495.7 | 2,726.8 | 9.3% | 16,631.1 | 17,719.6 | 6.5% |

*Sept'24-Oct'24import data from DGCIS data is prorated.

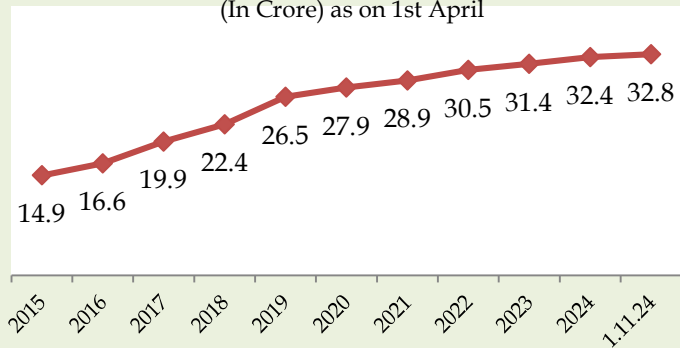
| 16. LPG marketing at a glance | | | | | | | | | | | | | | |
|-------------------------------------|-----------|-------|-------|-------|-------|-------|-------|--------|-------|-------|-------|--------|--------|-----------------|
| Particulars (As on 1st of April) | Unit | 2013 | 2014 | 2015 | 2016 | 2017 | 2018 | 2019 | 2020 | 2021 | 2022 | 2023 | 2024 | 01.11.24 (P) |
| LPG Active Domestic Customers | (Lakh) | | | 1486 | 1663 | 1988 | 2243 | 2654 | 2787 | 2895 | 3053 | 3140 | 3242 | 3283.4 |
| | Growth | | | | 11.9% | 19.6% | 12.8% | 18.3% | 5.0% | 3.9% | 5.5% | 2.9% | 3.2% | 3.8% |
| LPG Coverage (Estimated) | (Percent) | | | 56.2 | 61.9 | 72.8 | 80.9 | 94.3 | 97.5 | 99.8 | - | - | - | - |
| | Growth | | | | 10.1% | 17.6% | 11.1% | 16.5% | 3.4% | 2.3% | - | - | - | - |
| PMUY Beneficiaries | (Lakh) | | | | | 200.3 | 356 | 719 | 802 | 800 | 899.0 | 958.6 | 1032.7 | 1033 |
| | Growth | | | | | | 77.7% | 101.9% | 11.5% | -0.2% | 12.2% | 6.6% | 7.7% | 6.9% |
| LPG Distributors | (No.) | 12610 | 13896 | 15930 | 17916 | 18786 | 20146 | 23737 | 24670 | 25083 | 25269 | 25386 | 25481 | 25532 |
| | Growth | 9.8% | 10.2% | 14.6% | 12.5% | 4.9% | 7.2% | 17.8% | 3.9% | 1.7% | 0.7% | 0.5% | 0.4% | 0.4% |
| Auto LPG Dispensing Stations | (No.) | 667 | 678 | 681 | 676 | 675 | 672 | 661 | 657 | 651 | 601 | 526 | 468 | 446 |
| | Growth | 2.3% | 1.6% | 0.4% | -0.7% | -0.1% | -0.4% | -1.6% | -0.6% | -0.9% | -8.5% | -12.5% | -11.0% | -10.1% |
| Bottling Plants | (No.) | 185 | 187 | 187 | 188 | 189 | 190 | 192 | 196 | 200 | 202 | 208 | 210 | 212 |
| | Growth | 0.5% | 1.1% | 0.0% | 0.5% | 0.5% | 0.5% | 1.1% | 2.1% | 2.0% | 1.0% | 4.5% | 1.0% | 1.0% |

Source: PSU OMCs (IOCL, BPCL and HPCL)

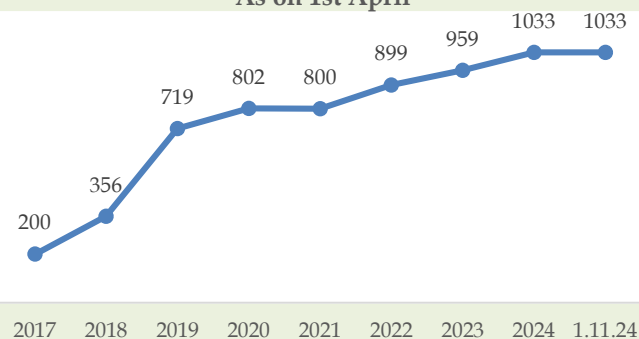
1. Growth rates as on 01.11.2024 are with respect to figs as on 01.11.2023. Growth rates as on 1 April of any year are with respect to figs as on 1 April of previous year.

2. The LPG coverage is calculated by PSU OMCs based upon the active LPG domestic connections and the estimated number of households. The number of households has been projected by PSU OMCs based on 2011 census data. Factors like increasing nuclearization of families, migration of individuals/ families due to urbanization and reduction in average size of households etc. impact the growth of number of households. Due to these factors, the estimated no. of households through projection of 2011 census data may slightly differ from the actual no. of households in a State/UT. Further, this methodology does not include PNG (domestic) connections.

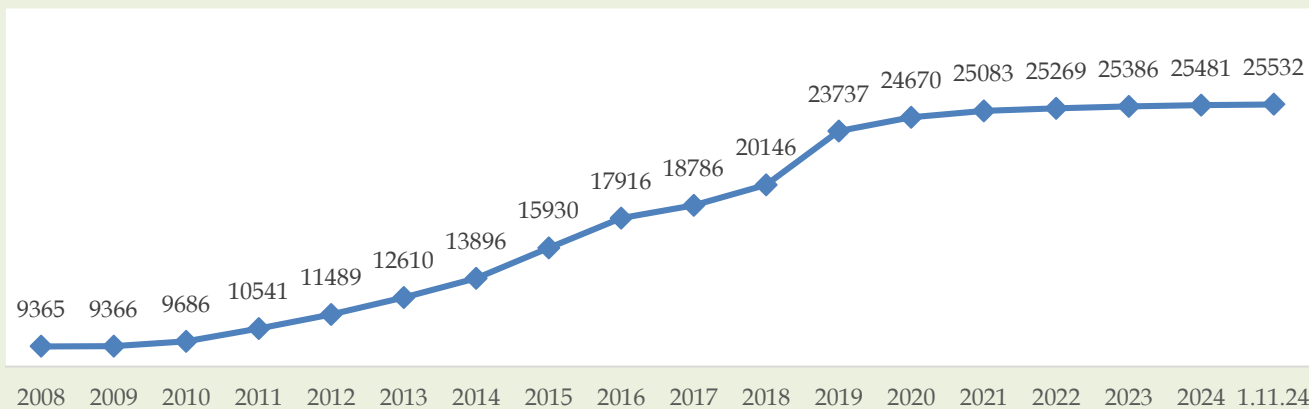
Numbers of Active Domestic LPG Customers
(In Crore) as on 1st April



Number of PMUY beneficiaries (in Lakhs)
As on 1st April



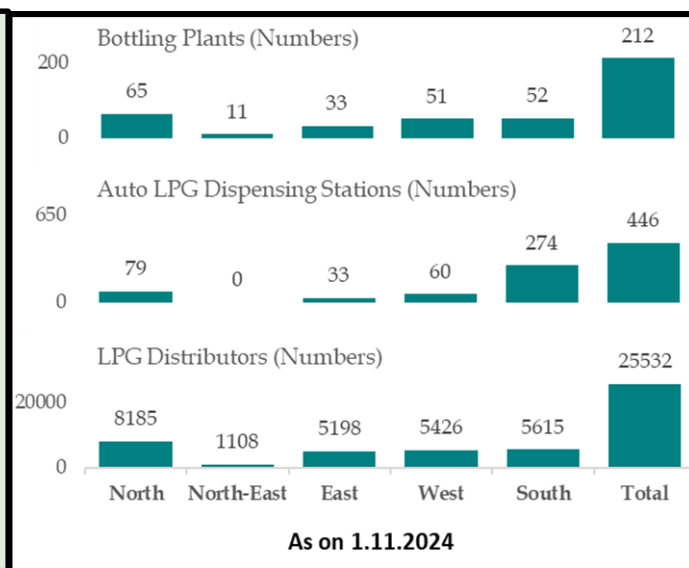
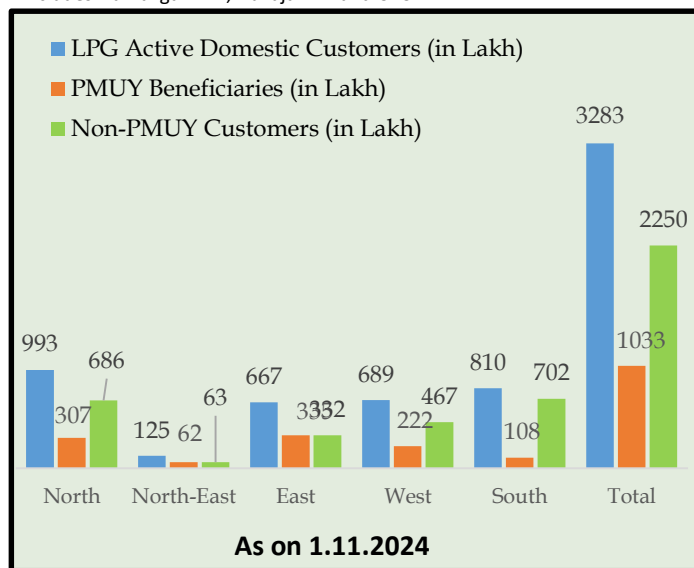
Number of LPG Distributors (As on 1st April)



17-Region-wise data on LPG marketing (As on 01.11.2024)

| Particulars | North | North-East | East | West | South | Total |
|---|-------|------------|-------|-------|-------|--------|
| LPG Active Domestic Customers (in Lakh) | 992.7 | 124.9 | 666.9 | 688.9 | 810.0 | 3283.4 |
| Non-PMUY Customers (in Lakh) | 685.9 | 63.1 | 332.3 | 466.9 | 701.9 | 2250.0 |
| PMUY Beneficiaries (in Lakh) | 306.8 | 61.9 | 334.7 | 222.0 | 108.1 | 1033.4 |
| LPG Distributors (Numbers) | 8185 | 1108 | 5198 | 5426 | 5615 | 25532 |
| Auto LPG Dispensing Stations (Numbers) | 79 | 0 | 33 | 60 | 274 | 446 |
| Bottling Plants* (Numbers) | 65 | 11 | 33 | 51 | 52 | 212 |

*Includes Numaligarh BP, Duliajan BP and CPCL BP.





PART-E

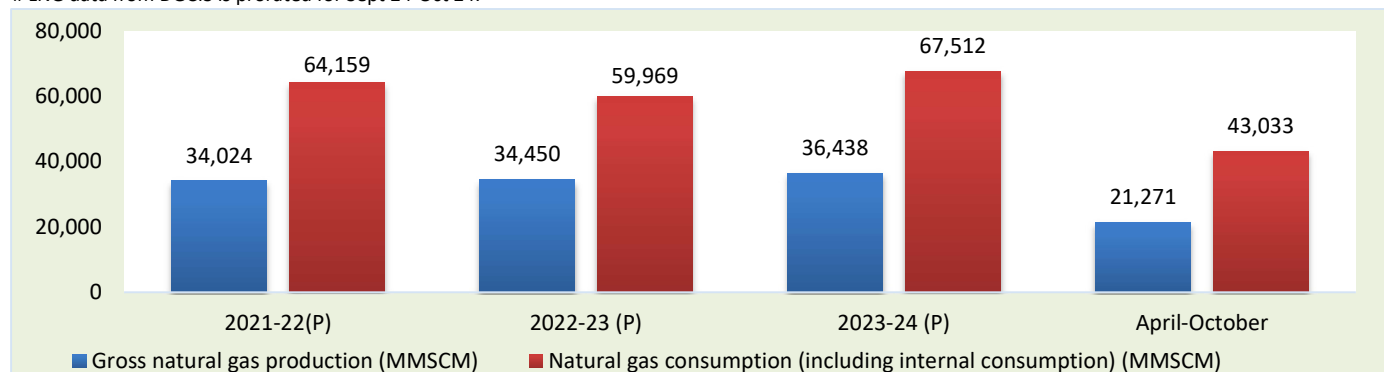
Natural Gas

18. Natural gas at a glance

(MMSCM)

| Details | 2022-23 | 2023-24 | October | | | April-October | | |
|---|---------|---------|----------------|---------------------|----------------|----------------|---------------------|-------------|
| | | | 2023-24 (P) | 2024-25 (Target) | 2024-25 (P) | 2023-24 (P) | 2024-25 (Target) | 2024-25 (P) |
| (a) Gross production | 34,450 | 36,438 | 3,161 | 3,411 | 3,111 | 21,040 | 22,907 | 21,271 |
| - ONGC | 19,969 | 19,316 | 1,634 | 1,730 | 1,620 | 11,385 | 11,563 | 11,027 |
| - Oil India Limited (OIL) | 3,041 | 3,090 | 273 | 340 | 279 | 1,791 | 2,272 | 1,856 |
| - Private / Joint Ventures (JVs) | 11,440 | 14,032 | 1,254 | 1,341 | 1,212 | 7,865 | 9,072 | 8,388 |
| (b) Net production (excluding flare gas and loss) | 33,664 | 35,717 | 3,111 | | 3,073 | 20,614 | | 20,948 |
| (c) LNG import [#] | 26,304 | 31,795 | 2,653 | | 2,932 | 18,070 | | 22,085 |
| (d) Total consumption including internal consumption (b+c) | 59,969 | 67,512 | 5,764 | | 6,005 | 38,684 | | 43,033 |
| (e) Total consumption (in BCM) | 60.0 | 67.5 | 5.8 | | 6.0 | 38.7 | | 43.0 |
| (f) Import dependency based on consumption (%), {c/d*100} | 43.9 | 47.1 | 46.0 | | 48.8 | 46.7 | | 51.3 |

[#] LNG data from DGCIS is prorated for Sept'24-Oct'24.



| 19. Coal Bed Methane (CBM) gas development in India | | | |
|--|--|------------------------|--------|
| Prognosticated CBM resources | | 91.8 | TCF |
| Established CBM resources | | 10.4 | TCF |
| CBM Resources (33 Blocks) | | 62.8 | TCF |
| Total available coal bearing areas (India) | | 32760 | Sq. KM |
| Total available coal bearing areas with MoPNG/DGH | | 12254* | Sq. KM |
| Area awarded | | 21,177** | Sq. KM |
| Blocks awarded* | | 39 | Nos. |
| Exploration initiated (Area considered if any boreholes were drilled in the awarded block) | | 11008 | Sq. KM |
| Production of CBM gas | | April-October 2024 (P) | 427.29 |
| Production of CBM gas | | October 2024 (P) | 64.82 |
| | | | MMSCM |

*ST CBM Block awarded & relinquished twice- in CBM Round II and Round IV -Area considered if any boreholes were drilled in the awarded block. **MoPNG awarded 04 new CBM Blocks (Area 3862 sq. km) under Special CBM Bid Round 2021, in September 2022. ***Area considered if any boreholes were drilled in the awarded block

| 19a. Status of Compressed Bio Gas (CBG) projects under SATAT (as on 01.11.2024) (Provisional) | | | | | | | |
|---|---------------|------|------|------|-------|-----|--------|
| Particulars | Units | IOCL | HPCL | BPCL | GAIL# | IGL | Total |
| No. of CBG plants commissioned and initiated sale of CBG | No. of plants | 37* | 12 | 8 | 18 | 6 | 79* |
| Start of CBG sale from retail outlet(s) | Nos. | 97 | 84 | 69 | 1 | 0 | 251 |
| Sale of CBG in 2022-23 | Tons | 5822 | 77 | 6 | 5322 | | 11,227 |
| Sale of CBG in 2023-24 | Tons | 6500 | 309 | 102 | 12813 | | 19724 |
| Sale of CBG in 2024-25 (up to October 2024) | Tons | 4412 | 1097 | 178 | 14814 | | 20501 |
| Sale of CBG in CGD network | GA Nos. | | | | 47 | | 44 |

Sale of CBG sourced under CBG-CGD synchronization from OGMCS (IOC-1175 Tons; BPC-3567 Tons; HPC- 2555 Tons & IGL) are reported in GAIL's CBG sale figure. *2 LOI holders of IndianOil are supplying CBG produced at their plants to two other OGMCS and hence they are counted only once in cumulative CBG plants commissioned on industry basis.

| 20. Common Carrier Natural Gas pipeline network as on 30.06.2024 | | | | | | | | | | | | |
|--|----------|---------------|--------------|--------------|--------------|------------|------------|-----------|-----------|-----------|--------------|---------------|
| Nature of pipeline | GAIL | GSPL | PII | IOCL | AGCL | RGPL | GGL | DFCL | ONGC | GIGL | GITL | Others* |
| Operational | Length | 10,986 | 2,722 | 1,483 | 143 | 107 | 304 | 73 | 42 | 24 | | |
| Partially | Capacity | 233.2 | 43.0 | 85.0 | 20.0 | 2.4 | 3.5 | 5.1 | 0.7 | 6.0 | | |
| commissioned [#] | Length | 4,933 | | | 1,080 | | | | | 1,302 | 364 | |
| | Capacity | 0.0 | | | | | | | | | | |
| Total operational length | | 15,919 | 2,722 | 1,483 | 1,223 | 107 | 304 | 73 | 42 | 24 | 1,302 | 364 |
| | | | | | | | | | | | | 0 |
| Under construction | Length | 2,605 | 100 | | 65 | | | | | | 0 | 220 |
| | Capacity | 26.3 | 3.0 | | 1.0 | | | | | | 0.0 | 36.0 |
| Total length | | 18,524 | 2,822 | 1,483 | 1,288 | 107 | 304 | 73 | 42 | 24 | 1,302 | 584 |
| | | | | | | | | | | | | 2,640 |
| | | | | | | | | | | | | 29,193 |

Source: PNGRB; Length in KMs; Authorized Capacity in MMSCMD (Arithmetic sum taken for each entity -capacity may vary from pipeline to pipeline); *Others-APGDC, IGL, IMC, GTIL, HPPL Consortium of H-Energy. Total authorized Natural Gas pipelines including Tie-in connectivity, dedicated & STPL is 33,347 Kms (P) however total operational and Under Construction Pipeline length is 35,217 Kms (P)

| 21. Existing LNG terminals | | | |
|----------------------------|------------------------------|-----------------------------------|--|
| Location | Promoters | Capacity as on 01.11.2024 (MMTPA) | % Capacity utilisation (April- September 2024) |
| Daheji | Petronet LNG Ltd (PLL) | 17.5 | 103.9 |
| Hazira | Shell Energy India Pvt. Ltd. | 5.2 | 48.7 |
| Dabhol | Konkan LNG Limited* | 5 | 30.9 |
| Kochi | Petronet LNG Ltd (PLL) | 5 | 21.8 |
| Ennore | Indian Oil LNG Pvt Ltd | 5 | 23.7 |
| Mundra | GSPL LNG Limited | 5 | 27.0 |
| Dhamra | Adani Total Private Limited | 5 | 48.2 |
| Total Capacity | | 47.7 | |

* To increase to 5 MMTPA with breakwater. Only HP stream of capacity of 2.9 MMTPA is commissioned

| 22. Status of PNG connections and CNG stations across India (Nos.) as on 30.09.2024(P) | | | | |
|--|--------------|-----------------|------------|------------|
| State/UT (State/UTs are clubbed based on the GAs authorised by PNGRB) | CNG Stations | PNG connections | | |
| | | Domestic | Commercial | Industrial |
| Andhra Pradesh | 196 | 2,77,329 | 518 | 53 |
| Andhra Pradesh, Karnataka & Tamil Nadu | 47 | 11,427 | 10 | 8 |
| Assam | 24 | 64,203 | 1,413 | 470 |
| Bihar | 156 | 1,85,777 | 152 | 23 |
| Bihar & Jharkhand | 18 | 9,020 | 11 | 0 |
| Bihar & Uttar Pradesh | 26 | 12,823 | 0 | 0 |
| Chandigarh (UT), Haryana, Punjab & Himachal Pradesh | 33 | 28,270 | 186 | 53 |
| Chhattisgarh | 22 | 4,551 | 0 | 0 |
| Dadra & Nagar Haveli (UT) | 6 | 12,706 | 58 | 66 |
| Daman & Diu (UT) | 5 | 5,322 | 95 | 58 |
| Daman and Diu & Gujarat | 15 | 8,177 | 32 | 0 |
| Goa | 14 | 15,810 | 40 | 47 |
| Gujarat | 1,016 | 34,20,149 | 23,909 | 5,818 |
| Haryana | 457 | 4,29,559 | 1,288 | 2,662 |
| Haryana & Himachal Pradesh | 14 | 54 | 1 | 0 |
| Haryana & Punjab | 27 | 2,003 | 0 | 0 |
| Himachal Pradesh | 16 | 8,487 | 32 | 4 |
| Jharkhand | 104 | 1,39,940 | 47 | 8 |
| Karnataka | 401 | 4,66,224 | 622 | 380 |
| Kerala | 167 | 1,01,697 | 91 | 28 |
| Kerala & Puducherry | 23 | 6,334 | 0 | 0 |
| Madhya Pradesh | 313 | 2,50,745 | 529 | 556 |
| Madhya Pradesh and Chhattisgarh | 9 | 0 | 0 | 0 |
| Madhya Pradesh and Rajasthan | 37 | 1,119 | 0 | 0 |
| Madhya Pradesh and Uttar Pradesh | 20 | 0 | 0 | 3 |
| Maharashtra | 936 | 36,00,528 | 5,032 | 1,068 |
| Maharashtra & Gujarat | 74 | 2,02,267 | 11 | 41 |
| Maharashtra and Madhya Pradesh | 16 | 0 | 0 | 0 |
| | | | | |

| State/UT (State/UTs are clubbed based on the GA's authorised by PNGRB) | CNG Stations | PNG connections | | |
|---|--------------|--------------------|---------------|---------------|
| | | Domestic | Commercial | Industrial |
| National Capital Territory of Delhi (UT) | 493 | 16,18,765 | 4,312 | 1,912 |
| Odisha | 118 | 1,28,580 | 20 | 2 |
| Puducherry | 10 | 0 | 0 | 0 |
| Puducherry & Tamil Nadu | 8 | 429 | 3 | 0 |
| Punjab | 223 | 95,362 | 718 | 324 |
| Punjab & Rajasthan | 20 | 5,725 | 0 | 0 |
| Rajasthan | 337 | 3,48,343 | 324 | 1,754 |
| Tamil Nadu | 327 | 41,766 | 25 | 29 |
| Telangana | 195 | 2,17,076 | 135 | 133 |
| Telangana and Karnataka | 11 | 126 | 0 | 2 |
| Tripura | 20 | 63,498 | 508 | 62 |
| UT of Jammu and Kashmir | 2 | 0 | 0 | 0 |
| Uttar Pradesh | 1,045 | 16,99,900 | 2,983 | 3,634 |
| Uttar Pradesh & Rajasthan | 47 | 24,060 | 62 | 349 |
| Uttar Pradesh and Uttrakhand | 31 | 16,249 | 0 | 0 |
| Uttarakhand | 37 | 74,874 | 108 | 121 |
| West Bengal | 143 | 44,107 | 6 | 1 |
| | | | | |
| | | | | |
| Grand Total | 7,259 | 1,36,43,381 | 43,281 | 19,669 |

Note: 1. All the GAs where PNG connections/CNG Stations have been established are considered as Operational, 2. Under normal conditions. Operation of any particular GA commences within around one year of authorization. 3. State/UTs wherever clubbed are based on the GAs authorised by PNGRB.

23. Domestic Natural Gas price and Gas price ceiling (GCV basis)

| Period | Domestic Natural Gas price in US\$/MMBTU | Gas price ceiling in US\$/MMBTU |
|-----------------------------|--|---------------------------------|
| April 2020 - September 2020 | 2.39 | 5.61 |
| October 2020 - March 2021 | 1.79 | 4.06 |
| April 2021 - September 2021 | 1.79 | 3.62 |
| October 2021 - March 2022 | 2.90 | 6.13 |
| April 2022 - September 2022 | 6.10 | 9.92 |
| October 2022 - March 2023 | 8.57 | 12.46 |
| 1 April 2023 - / April 2023 | 9.16 | 12.12 |

| Period | Domestic Gas calculated price in US\$/MMBTU | Domestic Gas ceiling price for ONGC/OIL in US\$/MMBTU | Period | HP-HT Gas price ceiling in US\$/MMBTU |
|------------------------------|---|---|---------------------------|---------------------------------------|
| 8 April 2023- 30 April 2023 | 7.92 | 6.50 | April 2023-September 2023 | 12.12 |
| 1 May 2023 - 31 May 2023 | 8.27 | 6.50 | | |
| 1 June 2023 - 30 June 2023 | 7.58 | 6.50 | | |
| 1 July 2023 - 31 July 2023 | 7.48 | 6.50 | | |
| 1 Aug 2023 - 31 Aug 2023 | 7.85 | 6.50 | | |
| 1 Sept 2023 - 30 Sept 2023 | 8.60 | 6.50 | | |
| 1 Oct 2023 - 31 Oct 2023 | 9.20 | 6.50 | October'2023 - March 2024 | 9.96 |
| 1 Nov 2023 - 30 Nov 2023 | 9.12 | 6.50 | | |
| 1 Dec 2023 - 31 Dec 2023 | 8.47 | 6.50 | | |
| 1 Jan 2024 - 31 Jan 2024 | 7.82 | 6.50 | | |
| 1 Feb 2024- 29 Feb 2024 | 7.85 | 6.50 | | |
| 1 Mar 2024- 31 Mar 2024 | 8.17 | 6.50 | | |
| 1 April 2024 - 30 April 2024 | 8.38 | 6.50 | April 2024-September 2024 | 9.87 |
| 1 May 2024 - 31 May 2024 | 8.90 | 6.50 | | |
| 1 June 2024 - 30 June 2024 | 8.44 | 6.50 | | |
| 1 July 2024 - 31 July 2024 | 8.24 | 6.50 | | |
| 1 Aug 2024 - 31 Aug 2024 | 8.51 | 6.50 | | |
| 1 Sept 2024-30 Sept 2024 | 7.85 | 6.50 | | |
| 1 Oct 2024 - 31 Oct 2024 | 7.48 | 6.50 | October 2024 - March 2025 | 10.16 |
| 1 Nov 2024 - 30 Nov 2024 | 7.53 | 6.50 | | |

Natural Gas prices are on GCV basis

24. CNG/PNG prices

| City | CNG (Rs/Kg) | PNG (Rs/SCM) | Source |
|--------|-------------|--------------|--------------------------|
| Delhi | 75.09 | 48.59 | IGL website (13.11.2024) |
| Mumbai | 75.00 | 48.00 | MGL website (13.11.2024) |

Indian Natural Gas Spot Price for Physical Delivery

| IGX Price Index Month | Avg. Price | | Volume (MMSCM) | Source |
|-----------------------|------------|----------|----------------|---------------------|
| | INR/MMBtu | \$/MMBtu | | |
| October 2024 | 1098 | 13.07 | 155.60 | As per IGX website: |

*Prices are weighted average prices | \$1=INR 84.02 | 1 MMBtu=25.2 SCM (Data Excluding Ceiling Price Gas)



PART-F

Taxes & Duties on Petroleum Products

25. Information on Prices, Taxes and Under-recoveries/Subsidies

| International FOB prices/ Exchange rates (\$/bbl) | | | | Price buildup of petroleum products (Rs./litre/Cylinder) * | | |
|---|-------------------------------|---|-----------|--|--------------|-------------------------|
| Particulars | 2021-22 | 2022-23 | Oct'24 | Particulars | Petrol | Diesel |
| Crude oil (Indian Basket) | 79.18 | 93.15 | 75.12 | Price charged to dealers (excluding Excise Duty and VAT) | 55.17 | 56.11 |
| Petrol | 89.66 | 107.00 | 79.75 | Excise Duty | 19.90 | 15.80 |
| Diesel | 88.45 | 128.08 | 85.00 | Dealers' Commission (Average) | 4.30 | 2.93 |
| Kerosene | 85.31 | 120.55 | 85.17 | VAT (incl VAT on dealers' commission) | 15.40 | 12.83 |
| LPG (\$/MT) | 692.67 | 711.50 | 622.00 | Retail Selling Price | 94.77 | 87.67 |
| FO (\$/MT) | 445.25 | 452.66 | 435.71 | | | |
| Naphtha (\$/MT) | 698.25 | 666.53 | 636.45 | | | |
| Exchange (Rs./\$) | 74.51 | 80.39 | 84.03 | | | |
| Customs, excise duty & GST rates | | | | | | |
| Product | Basic customs duty # | Excise duty | GST rates | Particulars | PDS SKO | Subsidised Domestic LPG |
| Petrol | 2.50% | Rs 19.90/Ltr | ** | Price before taxes and dealers'/distributors' commission | 51.63 | 691.68 |
| Diesel | 2.50% | Rs 15.80/Ltr | ** | Dealers'/distributors' commission | 2.65 | 73.08 |
| PDS SKO | 5.00% | Not Applicable | 5.00% | GST (incl GST on dealers'/distributors' commission) | 2.71 | 38.24 |
| Non-PDS SKO | 5.00% | | 18.00% | Retail Selling Price | 56.99 | 803.00 |
| Domestic LPG | Nil*** | | 5.00% | *Petrol and Diesel at Delhi as per IOCL are as on 01st Nov 2024. PDS SKO at Mumbai as on 1st Nov 2024 and Subsidised Domestic LPG at Delhi as on 1st Nov 2024. | | |
| Non Domestic LPG | 5.00% | | 18.00% | | | |
| Furnace Oil (Non-Fert) | 2.50% | | 18.00% | | | |
| Naphtha (Non-Fert) | 2.50% | | 18.00% | | | |
| ATF | 5.00% | 11% * | ** | | | |
| Crude Oil | Rs.1/MT+ Rs.50/-MT as NCCD | Rs.1/MT+ Cess@20% + Rs.50 /-MT NCCD + Rs.NIL/ MT SAED ^^^ | ** | | | |
| # Social welfare surcharge @ 10% is levied on aggregate duties of Customs excluding CVD in lieu of IGST; | | | | | | |
| *2% for scheduled commuter airlines from regional connectivity scheme airports; | | | | | | |
| ** GST Council shall recommend the date on which GST shall be levied on petroleum crude , HSD, MS, natural gas and ATF; | | | | | | |
| *** Basic Customs duty is Nil for import of domestic LPG sold to household consumers (including NDEC) by PSU OMCs. Basic Customs duty rate is 5% for other importers of domestic LPG; | | | | | | |
| ^^^ Effective 18.09.2024 SAED on crude oil. | | | | | | |

25. Information on Prices, Taxes and Under-recoveries/Subsidies

| DBTL/ PMUY Subsidy | | | |
|--|-----------|---------|-------------|
| Domestic LPG under DBTL (Direct benefit transfer for LPG) | | | |
| Product | 2021-22 | 2022-23 | 2023-24 (P) |
| | Rs./Crore | | |
| DBTL subsidy | - | 823 | 1,143 |
| PME & IEC^ | 242 | 32 | 84 |
| Total | 242 | 855 | 1,227 |
| ^ On payment basis (PME & IEC - Project Management Expenditure & Information , Education and Communication) | | | |
| Note: During FY 2022-23 Government of India has approved a one-time grant of Rs. 22,000 crores to PSU OMCs towards under-recoveries in Domestic LPG. | | | |
| | | | |
| PMUY | | | |
| Particulars | 2021-22 | 2022-23 | 2023-24 (P) |
| | Rs./Crore | | |
| PMUY | 1,569 | 6,110 | 10,217 |
| PME & IEC^ | - | - | - |
| Pradhan Mantri Gareeb Kalyan Yojana | - | - | - |
| Total | 1,569 | 6,110 | 10,217 |
| ^ On payment basis (PME & IEC - Project Management Expenditure & Information , Education and Communication) | | | |
| Total Subsidy as a percentage of GDP (at current prices) | | | |
| Particulars | 2021-22 | 2022-23 | 2023-24 |
| Petroleum subsidy | 0.01 | 0.11 | 0.04 |

| Sales & profit of petroleum sector (Rs. Crores) | | | | |
|--|-----------|----------|------------------|--------|
| Particulars | 2023-24 | | Q1 2024-25 (P) | |
| | Turnover | PAT | Turnover | PAT |
| Upstream/midstream Companies (PSU) | 2,89,654 | 54,914 | 74,486 | 13,129 |
| Downstream Companies (PSU) | 18,27,390 | 80,986 | 4,62,961 | 6,014 |
| Standalone Refineries (PSU) | 2,08,127 | 8,470 | 54,111 | 839 |
| Private-RIL | 5,74,956 | 42,042 | 1,40,202 | 7,611 |
| Borrowings of OMCs (Rs. Crores), As on | | | | |
| Company | Mar'23 | Mar'24 | June'24 | |
| IOCL | 1,32,495 | 1,16,496 | 1,15,847 | |
| BPCL | 35,855 | 18,767 | 15,210 | |
| HPCL | 64,517 | 60,254 | 57,405 | |
| | | | | |
| Petroleum sector contribution to Central/State Govt. | | | | |
| Particulars | 2022-23 | 2023-24 | 2024-25 (Q1) (P) | |
| Central Government | 4,28,067 | 4,32,394 | 79,192 | |
| % of total revenue receipts* | 18% | 16% | | |
| State Governments | 3,20,651 | 3,18,762 | 76774.64 | |
| % of total revenue receipts^ | 8% | 7% | | |
| Total (Rs. Crores)** | 7,48,718 | 7,51,156 | 1,55,966 | |
| ** Source – Receipt Budget of Government of India. (Actual for 2022-23 and RE for 2023-24) | | | | |
| | | | | |
| ^ ^ Source – RBI Study of State Finances. (RE for 2022-23 and BE for 2023-24) | | | | |
| **Totals may not tally due to roundoff. | | | | |

Note: GDP figure for 2021-22 are Actual; 2022-23 First Revised Estimates and 2023-24 Provisional Estimates . Source: MoSPI, GOI.



PART-G

Miscellaneous

26. Capital expenditure of PSU oil companies

(Rs in crores)

| Company | 2021-22 | 2022-23 (P) | 2023-24 (P) | 2024-25 (P) | |
|---|-----------------|-----------------|-----------------|--------------------|----------------|
| | | | | Target (Annual) | Apr-Oct'24 (P) |
| ONGC Ltd | 26,621 | 29,209 | 34,551 | 30,800 | 34,052 |
| ONGC Videsh Ltd (OVL) | 4,836 | 2,723 | 3,262 | 5,580 | 2,522 |
| Oil India Ltd (OIL) | 4,239 | 5,057 | 5,390 | 6,880 | 3,255 |
| GAIL (India) Ltd | 6,970 | 8,313 | 10,388 | 8,044 | 4,317 |
| Indian Oil Corp. Ltd. (IOCL) | 29,604 | 35,205 | 38,660 | 30,909 | 22,066 |
| Bharat Petroleum Corp. Ltd (BPCL) | 11,449 | 11,527 | 11,002 | 13,000 | 6,521 |
| Hindustan Petroleum Corp. Ltd (HPCL) | 16,205 | 13,847 | 13,842 | 12,500 | 6,910 |
| Mangalore Refinery & Petrochem Ltd (MRPL) | 604 | 641 | 1,513 | 820 | 409 |
| Chennai Petroleum Corp. Ltd (CPCL) | 575 | 609 | 561 | 501 | 420 |
| Numaligarh Refinery Ltd (NRL) | 3,403 | 6,615 | 8,585 | 9,375 | 5,107 |
| Balmer Lawrie Co. Ltd (BL) | 23 | 46 | 47 | 40 | 18 |
| Engineers India Ltd (EIL) | 67 | 60 | 108 | 50 | 17 |
| Total | 1,04,596 | 1,13,853 | 1,27,908 | 1,18,499 | 85,614 |

Includes expenditure on investment in JV/subsidiaries.

(P) Provisional

Totals may not tally due to roundoff.

27. Conversion factors and volume conversion

| Weight to volume conversion | | | | Volume conversion | |
|--------------------------------|------------------|-------------|--------------|---------------------------|---------------|
| Product | Weight (MT) | Volume (KL) | Barrel (bbl) | From | To |
| LPG | 1 | 1.844 | 11.60 | 1 US Barrel (bbl) | 159 litres |
| Petrol (MS) | 1 | 1.411 | 8.88 | 1 US Barrel (bbl) | 42 US Gallons |
| Diesel (HSD) | 1 | 1.210 | 7.61 | 1 US Gallon | 3.78 litres |
| Kerosene (SKO) | 1 | 1.285 | 8.08 | 1 Kilo litre (KL) | 6.29 bbl |
| Aviation Turbine Fuel (ATF) | 1 | 1.288 | 8.10 | 1 Million barrels per day | 49.8 MMTPA |
| Light Diesel Oil (LDO) | 1 | 1.172 | 7.37 | Energy conversion | |
| Furnace Oil (FO) | 1 | 1.0424 | 6.74 | 1 Kilocalorie (kcal) | 4.187 kJ |
| Crude Oil | 1 | 1.170 | 7.33 | 1 Kilocalorie (kcal) | 3.968 Btu |
| Exclusive Economic Zone | | | | 1 Kilowatt-hour (kWh) | 860 kcal |
| 200 Nautical Miles | 370.4 Kilometers | | | 1 Kilowatt-hour (kWh) | 3,412 Btu |

| Natural gas conversions | | | |
|---|------------------|--|--------------------------|
| 1 Standard Cubic Metre (SCM) | 35.31 Cubic Feet | 1 MMBTU | 25.2 SCM @10000 kcal/SCM |
| 1 Billion Cubic Metres (BCM)/year of Gas | 2.74 MMSCMD | GCV (Gross Calorific Value) | 10,000 kcal/SCM |
| 1 Trillion Cubic Feet (TCF) of Gas Reserve | 3.88 MMSCMD | NCV (Net Calorific Value) | 90% of GCV |
| 1 Million Metric Tonne Per Annum (MMTPA) of LNG | 3.60 MMSCMD | Gas required for 1 MW power generation | 4,541 SCM/day |
| 1 MT of LNG | 1,325 SCM | Power generation from 1 MMSCMD of gas | 220 MW |



For any Information, please contact.

Director General Petroleum Planning & Analysis Cell

(Ministry of Petroleum & Natural Gas, Government of India)
SCOPE Complex, 2nd Floor Core-8, Lodhi Road, New Delhi-110003
Tel.: 011-24306191/92, 011-24361314, www.ppac.gov.in